

# Using internal transcribed spacers 2 (ITS2) to identify seaweed species from Tomini Bay and Banten Bay

*by N Dharmayanti Abinawanto And A Anti*

---

**Submission date:** 09-Jun-2022 04:50PM (UTC+0700)

**Submission ID:** 1853531284

**File name:** 7a\_1\_IOP\_Conf\_Using\_Niken\_2019.pdf (587.5K)

**Word count:** 2886

**Character count:** 18759

PAPER · OPEN ACCESS

## Using internal transcribed spacers 2 (ITS2) to identify seaweed species from Tomini Bay and Banten Bay

To cite this article: N Dharmayanti *et al* 2019 *IOP Conf. Ser.: Earth Environ. Sci.* **278** 012017

[View the article online](#) for updates and enhancements.

### You may also like

- [Marine seaweed \*Sargassum wightii\* extract a low-cost sensitizer for ZnO photoanode based dye-sensitized solar cell](#)  
Muthusamy Anand and Santhanakrishnan Suresh
- [Kaizen implementation in seaweed aquaculture \(\*Gracilaria\* sp.\) in Karawang, West Java: A productivity improvement case study](#)  
F A Hasanah, M Nurhudah, M Mulyono et al.
- [Development and characterization of bamboo fiber reinforced biopolymer films](#)  
H P S Abdul Khalil, Hazwan Che Mohamad, A R Khairunnisa et al.



The Electrochemical Society  
Advancing solid state & electrochemical science & technology

## 241st ECS Meeting

Vancouver, BC, Canada. May 29 – June 2, 2022



ECS Plenary Lecture featuring  
**Prof. Jeff Dahn,**  
Dalhousie University

[Register now!](#)



## Using internal transcribed spacers 2 (ITS2) to identify seaweed species from Tomini Bay and Banten Bay

N Dharmayanti<sup>1\*</sup>, Abinawanto<sup>2</sup> and A Anti<sup>1</sup>

<sup>1</sup>Study Program of Fisheries Processing Technology, Jakarta Fisheries University, Indonesia

<sup>2</sup>Study Program of Biology Mathematics and Natural Science Faculty, Universitas Indonesia, Jakarta, Indonesia

\*E-mail: niken.stp@gmail.com

**Abstract.** Samples collected from two coastal areas by diving and using a boat. The fresh seaweed morphologically identified while the dried samples collected to be used for DNA testing. Previous research has been shown that there is an influence from environmental parameters on seaweed composition so that the water quality testing was carried out to determine the dominance of wild seaweed water. We conducted genomes extraction, PCR amplification, DNA sequencing testing, alignment with MEGA 7 application and made phylogeny tree, which are distributed at Tomini bay *Dictyota* sp., *Halimeda* sp., *Padina* sp., *Polysiphonia* sp., and Banten bay as *Sargassum* sp. This study evaluated the feasibility of using the ITS2 marker to identify some wild seaweed species, from Tomini Bay and Banten Bay waters. Five wild seaweed species collected from these waters were submitted for DNA barcoding. Currently available universal primers for ITS2 region amplification were sufficient to be successfully amplified and the result of DNA amplification continue to be sequenced. In conclusion, the data presented here indicates that ITS2 are useful markers for DNA barcoding of wild seaweed, with advantage for ITS2 due to the larger availability of analytical tools and reference barcodes deposited at databases for this marker.

**Keywords:** DNA, ITS2 markers, wild seaweed

### 1. Introduction

The identity of five wild seaweed species has been determined by amplification of the Internal Transcribed Spacer 2 of the nuclear rDNA (ITS2) markers. This allows the detection of specificity patterns for each species and provides an alternative method, when morphological or biological species concept's methods fail. Total genomic DNA suitable for amplification was extracted from the dried tip of a leaf's alga following the CTAB method. We then proceeded to the classification and DNA testing result of the collected seaweeds.

Seaweed inhabits rocky substrates of the infralittoral zone where they play an important ecological role in providing habitat, food and shelter as well as spawning and nursery grounds for a wide variety of organisms [1, 2]. However, in recent years, seaweed stands have been significantly reduced, [3-7]. Despite its ecological importance, the taxonomy of species within the genus is still poorly understood and no studies have yet explored the genetic diversity of wild seaweed species in the Tomini and Banten Bay. The ecomorphs differ greatly from the average morphology of the species. That makes it difficult to distinguish which morphological variation is an adaptation to ecological conditions, which



Content from this work may be used under the terms of the Creative Commons Attribution 3.0 licence. Any further distribution of this work must maintain attribution to the author(s) and the title of the work, journal citation and DOI.

Published under licence by IOP Publishing Ltd

is a characteristic of a different species. Species determination is made even more difficult by the lack of comprehensive identification keys for the genus. The only currently available key for wild seaweed species [8] based on morphology is outdated and was written in a period when sampling possibilities, and thus also determination, were limited. Difficulties arise while identifying the species, as several names may have been applied to the various populations or ecomorphs belonging to a single species, i.e. the morphological variability of the species has been overlooked. The situation is similar for other Sargassaceae genera such as, for example, the genus *Sargassum* [9]. The current method of determining relations within the genus based primarily on morphological characteristics, is shown as being insufficient to unambiguously separate some species of this genus. Because of this, the focus is increasingly shifting to molecular methods of studying marine algae phylogeny, particularly brown algae, and this genus. In order to overcome morphological ambiguities in the identification of species, molecular markers are nowadays used [10].

Several different molecular markers have been used in recent studies of brown algae molecular taxonomy and phylogeny. The most common ones are nuclear ribosomal markers, ITS, SSU and LSU [11-13], ITS2 [10], plastid markers, *rbcL* and *psaA* [14, 15], and mitochondrial markers, *mt 23S* and *mt spacer* [2, 16]. However, most of these markers have been used for delineation among the higher taxonomic units such as genera and families and rarely for distinguishing between the species. This is especially the case in the order Fucales, the family Sargassaceae, and the genus *Cystoseira*, which require highly variable markers to determine relations between the taxa [17]. High genetic variations in the populations of the genus *Sargassum*, and suggest that those variations the populations should be considered separately when studying the ecology of the genus [5]. Recently, researchers have underlined the usefulness of the mitochondrial 23S in the delineation of *Sargassaceae* genera and the potential of the *mt23S-tRNAVal* spacer at below genus level [2]. Molecular markers have to be tested to better understand the taxonomy and evolution of the seaweed species research. The purpose of this research is identifying the appropriate ITS2 molecular marker with which species distinction of the wild seaweed could be achieved. We choose to test molecular markers in a preliminary study of four wild seaweed Tomini Bay's species and one wild seaweed Banten Bay's species. The data was then compared to published sequences of Tomini and Banten Bay's species.

## 2. Methods

**Sample collection and DNA preparation:** The individual of each species were sampled from the rocky bottom between 20 and 80 cm of depth. Four wild seaweeds were collected from the Tomini Bay at Avulua Village 10 km north to Parigi Moutong with coordinate 0°39'53.4"S 120°04'25.7"E in April 2018, and wild seaweed *Sargassum* sp from the Banten Bay at Pulau Lima waters (6°0'5.6376"S – 106°9'15.3684 "E) in February 2018. Morphological analysis was guided with characteristics described previously [8]. Immediately after collection, a part of the branch least overgrown by epiphytes was separated from each specimen. Visible epiphytes were then mechanically removed from the sampled part, tip of talus was washed with distilled water and stored in silica gel. Total DNA was isolated from silica dried algal tissue using Qiagen Plant mini kit and additionally purified using Qiagen Plasmid mini kit. PCR primers, PCR and sequencing Primers published by [2] for the *mt 23S* and the *mt23S-tRNAVal* spacer were used for PCR amplification and sequencing. Primers, PCR conditions and reaction ingredients are listed in table 1. The thermo cycler used in PCR amplification of all regions was Applied Biosystems 2720. The amplified DNA fragments were purified using QIAEX II gel extraction kit 150 (Qiagen). Sequencing was done by Macrogen in Korea using an ABI PRISM 3100 Avant Genetic Analyzer.

**Table 1.** Primers used to isolate molecular markers with annealing temperature (AT) an bibliographic source [18].

No	Markers	AT	Primers	Primer sequences
1	ITS2	55	5.8S-BF	5'-GATGAAGAACGCAGCGAAATGCGAT-3'
	Nuclear		25 BR-2	5'-TCCTCCGCTAGTATATGCTTAA-3'
2	COX3	42	CAF4A:	ATGTTTACTTGGTGRAGRGA
	Mitochondria		CAR4A:	CCCCACCARTAWATNGTNAG

Data analysis raw sequences were edited and trimmed manually using the version of Molecular Evolutionary Genetics Analysis v. 7 (MEGA [8]). The number of sequences determined by using the GenBank database which is hosted at the NCBI (National Center for Biotechnology Information, USA) [Link: <http://www.ncbi.nlm.nih.gov/>]. The NCBI hosts a number of biological databases for example whole-genome databases for human, mouse, chimp, seaweed or algae and another specific genome of organisms.

The number of polymorphic sites and phylogenetically informative sites were determined using the DnaSP v5 [19]. Alignment of sequences was processed using ClustalX [20] and visualized in GeneDoc [21] for each marker independently. A total of 11 sequences for other Mediterranean Cystoseira species available on GenBank and published by [2] were included in the analyses. The most suitable model of nucleotide evolution was determined by the Akaike Information Criterion, AIC, [22] as implemented in JmodelTest [23]: for the 23S Rdna the selected model was TrN+G with gamma=0.013, and for the mt spacer the selected model was HKY, with  $\tau_i/\tau_v=1.4910$ . Bayesian analyses were performed using MrBayes 3.1.1 [24]. The parameters of the Markov Chain Monte Carlo (MCMC) analysis comprised two runs (four chains each) for 500000 Species generations, with the sample frequency set to 100 and discarding first 1250 trees as the burn in. Thus, the posterior probabilities of the clades were determined from 3750 trees and the 50% majority-rule consensus tree was built.

### 3. Results and Discussion

Data analysis of sequences after trimmed by using MEGA X, resulting a vary sequences that equals for their pairs. Here the sequences based on their correct pairs.

#### 1. POLYSIPHONIA #3217322\_1N\_ITS2-5\_8S-BF

```
GGTCACAAGTGACGCTGCTTGCCGCCGAGGCGGCCCGCTGGCGGTGCGAGCCAGACAAC
TGACTGACTGACTGACCATCGTGGGTCGGACGCGCAAAGCCTAATAGCGGGCCTGGAC
ATCACCCGCACACCTCGCCCCGGTGGGGACAAGGCGGGGCGCCGAGTCTCGATCGCCCG
TCGCGTACCCACGCCCCCCCCCTGCCAAGAGAAATGGCGGGAGAGAGGAATGGGGAC
GGCAAGAAACATTGGCCCTCCACTAGTCGCAATGCCGCAGTCATACTTCTTAGGCCGGC
TCACGAGACGAAGCTCGCGGCCGGCTCATAGTCCGCCGCCCGAGCGCGCGGAGTCA
CCATTTCTGGCGTCTCAAGCGGGCCACGCACGGGGGGCGAGTGGGGTGGACAGACT
CCGACAAGCATGCTCCCAGGAGTATCCCGGAAGCGCAAGATGCGTTCAAAGTTTGATG
ATTAC
```

#### 2. POLYSIPHONIA #3217324\_2N\_600bp\_ITS2-5\_8S-BF

```
GAGATCCCGTAGGAAATAAGGACTGCTGCTTTTTTTTCTAGGAAATAAAAAACAGCATT
GACAGCCTAAAATACCCACATTTCTGTAGATATACTGTCGATCTGAGCGTTGTAAATGTAA
AAATCGAAAGCCATGATCACTCATTTATTTGAACCTTTGATATCTCTCCACCTCAACA
AAGCAAGAACAAGTAAACTCTGAATGACAAGTTCAATTCATGCCTGCCGGCTCAAAGA
ATCAATTCATTTTGTAAACAAAACAAAGCGCGCAAAAACACTGGAAATACACTTT
CTACAAGTAAATTTAGGTTGACCCCGCTTGTAGGTTATTCAAGCCTGGTAGCAAGGACG
CACCCATCAGCTGCGATTTCCGGTCCGGTCAGACCCGCTAAAATCGCAAAGTTATGTTGTGA
AATTTTACCTACACATGGGACACTACACAGGTATGCTCGCAGATTAAACCGCGAGCGCC
ATTTGCGTTCAAAAATTCGATGATTCA
```

## 3. HALIMEDA #3217326\_2N\_1400bp\_ITS2-5\_8S-BF

CCAAAAGCAGGACCGCTACCAACGCCACACCTCGCCTCCACAAACACACACTCAACACT  
CCGACTCAGACGGACCCTGCAAATGCCAAGCCCTAACAAACCCGCAAGCACGCACACA  
CACACACACGCACACACACCACCAGTGCAGGACTCAACTTCAGCACTCACACCCGCC  
GCTTTCGCGAACAAGCACAAACACATCCATGAATTCATCTACACCAACAAGCGCGCGCA  
CGCACGCACACACATACACACTCACACGCAAAGCTCAAACACAGAACTTCGACATACAC  
AGCACCGCCACCAGTTCACACTCCGCACACCAACTGCTCCGATCAAAGATTGCTCTCCTT  
ACCTTCACAGCCAGTGAATTGTAGTAACCGATCCCCAACAAACGAAGCCATGCGCACAGG  
TCGCCCTGCACACCTCTATCCACATCCCGTCGCCCTACTAAGTTCACCAGAACTA  
AAGAATGCCTCAACTCGCTTCCACAAAGCAGGACTCAGCTTTGGCTTGGCCTCCACGAA

## 4. PADINA #3217328\_3N\_ITS2-5\_8S-BF

CCACTATCCCACAGCAGTCACTGGATCGTAGTACTTCCCAGAGACTGAGCAAAAAA  
GGGGGAAGGGATGGGATAACGTTTTCCAACCTGTGTCGACCGAAACAACAGAAGTTTCTC  
TTCGGAATAACTCTCATACCCCCCTCCCCTTCTCTTTCTTGCCAGGACCCAGAACCGCAA  
AAGACAACCAAGCTAATATAGTACAATACACACACACAAATCCATTTCTCCCTTCTGTA  
TAATATTCCTTCCACAGTTCAGTGAATAAGTGTAAACCGTACTAGGAACCAAAAAAGTGA  
GAAAGTGGGCGCGGCTTTGGGTTCTCAAGTATTCCATAAGCCAGATGTTTGTATATTTTA  
GCAAAACACACA ACTCTTGCGGGATGCGGTGTCGACACGCTGTACCAACTGGCCGTGTC  
CAGTTGATACTATTAAGAGCAAGAGAATGTCACCTTCTCCTGGTTTCGCACACTCAC  
GAAAAGTCAAAACGCTTGGGAAAAACAGTAAACAACACTGGTTTCT

## 5. DICTYOTA #3217330\_4N\_ITS2-5\_8S-BF

CGGAGGTCCGTAAAGACGACGCGCTGCCCGATAGCAAGCAAGCAAGCAAGCTAA  
CTAACGGGCAGTCACTTACCTGACCGCGGTCGGAGGGGTCTCGGCGGGCCGGACGGTCG  
GGTGAAAGGGCAGCACCGCAACAGCAGAAATCGATCAATCACTCGATCAATGGATCAAA  
CAATCAACACAACCTCGCCGCCACGGGCCACACGGCCACCAACTTCTACTCTCGCTCT  
CTGCTACTCGGCGCGCAACCCGACTTGCGCCGGACTAACGCTGCCGCGTATACGATCCGA  
GACCTTCTCCTCCGGGTTGGACAGTTTTTGTACTCTTCGCGGGGCTCGGCGATGGTCGTT  
GCACGTCCGTAGAGGAGACGAAGAGACAGTAAACAACAACAACAACAACAACAACA  
ACAACAACAACAACAACAGCACTACACCATCATCGTCATCATCATCATCATCATCATCAT  
CACCATCATCATCATCAGCATCCCTACTACCACCGGGAGAACGGCCACCACCGGCGCTCG  
CATAGTCCGCCCCAAGTACTCACCTTTCCCCGCCGCGGCAAGTCATCTTGGTACCGCGA  
GAAGCGGTGCCGCGATGACGAGGCTAGGCGAAGACCGAGTGTGACAAGGACGAGTGG  
GGTGAACGAAGACTCCGACAAGCATGCTCCCAGGGATATCCCGGAAGCGCAAGATGCGT  
TCAAAGTTTTGATGATTCCG

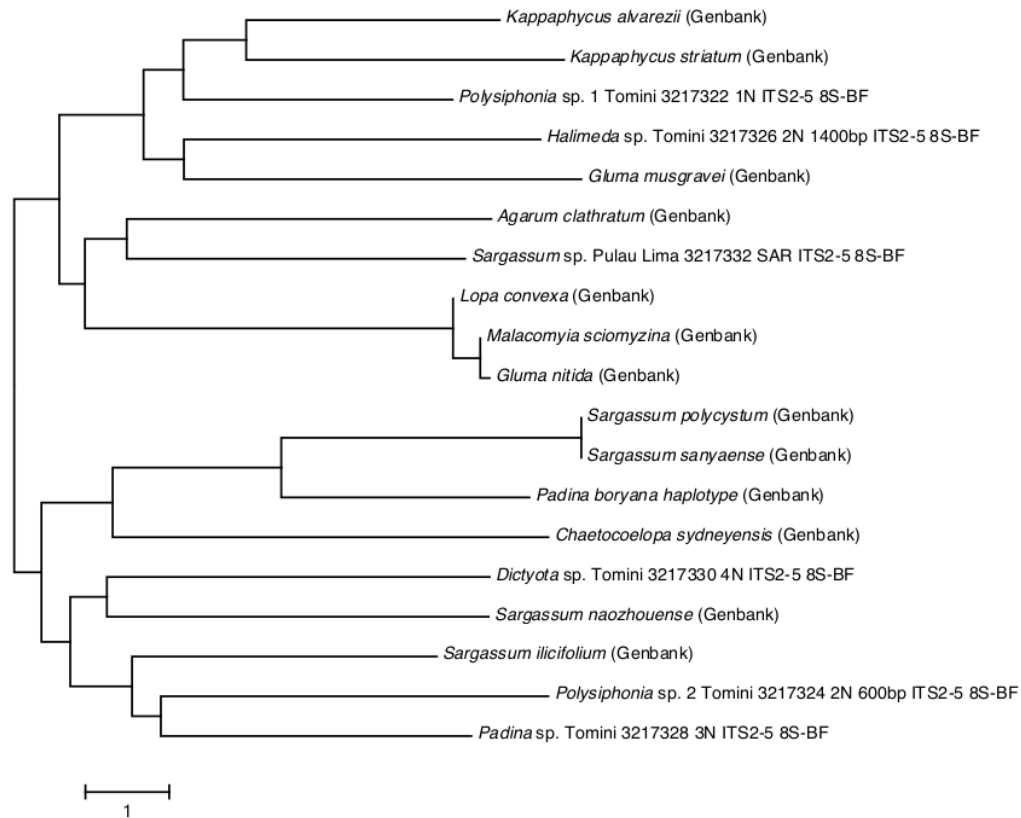
## 6. SARGASSUM #3217332\_SAR\_ITS2-5\_8S-BF

CATAATCATAATCACCGGCTCTCACCGGTACTCTCGAGACTACCTACCGTCCTAAGCCT  
CAAGTCCACCCGCGCACATCCCCGGCGACCGTCGTGTCCCCGCCCCGCGATAGGGGGC  
GCCGTCAACAACGGATCCTCCGGAGGACGCAAGGTGAACCTTGCTCCAGCGACGCCTCC  
AGCGCCGCAAGACAACAGAGGCCAGACAATCGGTAACCTCTAGGCTGGGTGGACT  
CAGGGGACGAGCAGGGAGCATGTACAAAAATACACCGCACTACCCTCCCCGGAACACT  
CATATTCGCTCCACCGCCTTGAGGTCGAGATCGAACCCAAAGCTGTGGGCGAGTTTTCG  
CCTCCTCCTCCCGACAAGCATGCTCCCAGGCATATCCCAGGAGCGCAAGATGCGTTCGA  
AGTTTCGATGATTACGAGAT

A total of four sequences for the mt23S Rdna (394 pb) and 15 sequences for the mt intergenic spacer (mt23S-rRNAVal) (333 pb) were successfully amplified and sequenced. The sequences were deposited in the GenBank.

Genetic analysis of the gene as the samples collected from Tomini Bay and Lima Island revealed a unique similarities to other species which is different from estimated sample as in described by their

morphological characteristics as well as from their herbarium. Analysis of the *rbcL* gene in these samples revealed some species as we see in figure 1.



**Figure 1.** Neighbor joining consensus trees using partial sequences of GenBank-NCBI.

Blast of the *rbcL* Tomini bay sample against the GenBank database did not support precise genetic identification for all samples. One sample showed a 100% similarity, although they come from a different clade that is *Sargassum* sp from Lima Island. In the other branch (clade) *Padina* sp from Tomini Bay was located within a very well supported branch (clade) with *Padina boryana*. More morphological and molecular studies have to be carried out before a definitive conclusion can be made.

#### 4. Conclusion

ITS2 are useful marker for DNA barcoding of wild seaweed, with advantage for ITS2 due to the larger availability of analytical tools and reference barcodes deposited at databases for this marker.

## References

- [1] Garreta A G 2000 *Cystoseira* C Agardh In: Gomez Garreta A (Editor) Flora phycologica Iberica Fucales. *University of Murcia, Publications Services, Barcelona*. **1** 99–101
- [2] Draisma S G A, Ballesteros E, Rousseau F and Thibaut T 2010 DNA sequence data demonstrate the polyphyly of the genus *Cystoseira* and other Sargassaceae genera (Phaeophyceae) *J. Phycol.* **46** 1329-1345
- [3] Thibaut T and Ballesteros E 2005 First report of *Cystoseira squarrosa* de Notaris (Fucophyceae, Fucales) from Spanish coastal waters. *Cryptogam Algal.* **26** 203-207
- [4] Susini M, Mangialajo L, Thibaut T and Meinesz A 2007a Development of a transplantation technique of *Cystoseira amentacea* var. *stricta* and *Cystoseira compressa* *Hydrobiologia*. **580** 241-244
- [5] Susini M, Thibaut T, Meinesz A and Forcioli D 2007b A preliminary study of genetic diversity in *Cystoseira amentacea* (C. Agardh) Bory var. *stricta* Montagne (Fucales, Phaeophyceae) using random amplified polymorphic DNA *Phycologia* **46** 605–611
- [6] Mangialajo L, Ruggieri N, Asnaghi V, Chiantore M, Povero P and Cattaneo-Vietti R 2007 Ecological status in the Ligurian Sea: the effect of coastline urbanization and the importance of proper reference sites *Mar. Pollut. Bull.* **55** 30-41
- [7] Mangialajo L, Chiantore M and Cattaneovietti R 2008 Loss of fucoid algae along a gradient of urbanization, and structure of benthic assemblages *Mar. Ecol. Prog. Ser.* **358** 63-74
- [8a] Ercegović A 1952 *Jadranske cistozire* (*Cystoseira* of Adriatic). Institute of Oceanography and Fisheries *Split*. 208
- [8b] Ercegović A 1959 Les facteurs de selection et d'isolement dans la genese de quelques especes d'algues Adriatiques (Factors of selection and isolation in the genesis of some algae model identification *IEEE Trans. Autom. Control* **19** 716-723
- [9] Mattio L and Payri C E 2011 190 Years of Sargassum taxonomy, facing the advent of DNA phylogenies *Bot. Rev.* **77** 31-70
- [10] Jegou C, Culioli G, Kervarec N, Simon G and Stiger-Pouvreau V 2010 LC/ESI-MS n and 1H HR-MAS NMR analytical methods as useful taxonomical tools within the genus *Cystoseira* C. Agardh (Fucales; Phaeophyceae) *Talanta* **83** 613-622
- [11] Rousseau F, Burrows R, Peters A F, Kuhlenkamp R and De Reviers B 2001 A comprehensive phylogeny of the Phaeophyceae based on nrDNA sequences resolves the earliest divergences *Life Sci.* **324** 305-319
- [12] Leclerc M C, Barriol V, Lecointre G and De Reviers B 1998 Low divergence in rDNA ITS sequences among five species of *Fucus* (Phaeophyceae) suggests a very recent radiation *J. Mol. Evol.* **46** 115-120
- [13] Harvey J B J and Goff L J 2006 A reassessment of species boundaries in *Cystoseira* and *Halidrys* (Phaeophyceae, Fucales) along the North American west coast *J. Phycol.* **42** 707-720
- [14] Bittner L C E, Payri A, Couloux C, Cruaud B, De Reviers and Rousseau F 2008 Molecular pylogeny of the Dictyotales and their position within the Phaeophyceae, based on nuclear, plastid and mitochondrial DNA sequence data *Mol. Phylogenet. Evol.* **49** 211-226
- [15] Cho G Y, Rousseau F, De Reviers B and Boo S M 2006 Phylogenetic relationships within the Fucales (Phaeophyceae) assessed by the photosystem I coding *psaA* sequences *Phycologia*. **45** 512-519
- [16] Coyer J A, Hoarau G, Oudot–Le Secq M, Stam W T and Olsen J L 2006 A mtDNA - based phylogeny of the brown algal genus *Fucus* (Heterokontophyta; Phaeophyta) *Mol. Phylogenet. Evol.* **39** 209–222
- [17] De Reviers B, Rousseau F and Draisma S G 2007 Classification of the Phaeophyceae from past to present and current challenges. In: J. Brodie and J. Lewis (Editors). *Unraveling the algae: the past, the present, and future of algal systematics CRC Press. Boca Raton*. 267–279



- [18] Camacho O, Mattio L, Draisma S, Frederico S and Diaz-Pulido G 2015 Morphological and molecular assessment of *Sargassum* (Fucales, Phaeophyceae) from Caribbean Colombia, including the proposal of *Sargassum giganteum* sp. nov, *Sargassum schnetteri* comb. nov. and *Sargassum* section *Cladophyllum* sect. nov *Systematics and biodiversity* **13** 105-130
- [19] Librado P and Rozas J 2009 DnaSP v5: A software for comprehensive analysis of DNA polymorphism data *Bioinformatics* **25** 1451-1452
- [20] Larkin M A, Blackshields G, Brown N P, Chenna R, Mcgettigan P A, McWilliam H, Valentin F, Wallace I M, Wilm A, Lopez R, Thompson J D, Gibson T J and Higgins D G 2007 Clustal W and Clustal X version 2.0 *Bioinformatics* **23** 2947-2948
- [21] Nicholas K B, Jr Nicholas H B and Li Deerfield D W 1997 GeneDoc: Analysis and Visualization of Genetic Variation. *Embnew. news* **4** 14
- [22] Akaike H 1974 A new look at the statistical model identification *IEEE Trans. Autom Control* **19** 716-723
- [23] Posada D 2008 jModelTest: Phylogenetic Model Averaging *Mol. Biol.Evol.* **25** 1253-1256
- [24] Huelsenbeck J P and Ronquist F R 2001 MrBayes: Bayesian inference of phylogenetic trees *Bioinformatics* **17** 754-745

# Using internal transcribed spacers 2 (ITS2) to identify seaweed species from Tomini Bay and Banten Bay

---

## ORIGINALITY REPORT

---

14%

SIMILARITY INDEX

9%

INTERNET SOURCES

9%

PUBLICATIONS

1%

STUDENT PAPERS

---

## PRIMARY SOURCES

---

- 1** Stefano G. A. Draisma. "DNA SEQUENCE DATA DEMONSTRATE THE POLYPHYLY OF THE GENUS CYSTOSEIRA AND OTHER SARGASSACEAE GENERA (PHAEOPHYCEAE)1 : PHYLOGENY OF SARGASSACEAE", *Journal of Phycology*, 12/2010 1%

Publication
  - 2** Elisabeth Antoine, Joël Fleurence. "Species identification of red and brown seaweeds using ITS ribosomal DNA amplification and RFLP patterns", *Journal of the Science of Food and Agriculture*, 2003 1%

Publication
  - 3** M Prabhu, J Mayandi, R N Mariammal, V Vishnukanthan, J M Pearce, N Soundararajan, K Ramachandran. "Peanut shaped ZnO microstructures: controlled synthesis and nucleation growth toward low-cost dye sensitized solar cells", *Materials Research Express*, 2015 1%

Publication
-

4	<a href="http://docksci.com">docksci.com</a> Internet Source	1 %
5	<a href="http://china.iopscience.iop.org">china.iopscience.iop.org</a> Internet Source	1 %
6	<a href="http://www.hindawi.com">www.hindawi.com</a> Internet Source	1 %
7	<a href="http://doczz.fr">doczz.fr</a> Internet Source	1 %
8	<a href="http://hdl.handle.net">hdl.handle.net</a> Internet Source	1 %
9	<a href="http://coek.info">coek.info</a> Internet Source	1 %
10	<a href="http://www.mdpi.com">www.mdpi.com</a> Internet Source	1 %
11	Abdelkader Ben Salem, Graziano Di Giuseppe, Andrea Anesi, Saoussen Hammami, Zine Mighri, Graziano Guella. " Natural Products among Brown Algae: The Case of (Sargassaceae, Phaeophyceae) ", Chemistry & Biodiversity, 2017 Publication	1 %
12	Dhara Dixit, Nikunj Balar, Mrugesh Trivedi, Poornima Suthar, C. R. K. Reddy, Devesh Gadhavi. "Internal Transcribed Spacer (ITS) Region Targeted Molecular Characterization of Macroalgal Diversity Along the Overlooked	<1 %

Expanse of Gulf of Kachchh, India",  
Proceedings of the National Academy of  
Sciences, India Section B: Biological Sciences,  
2021

Publication

---

13	<a href="http://frederikleliaert.wordpress.com">frederikleliaert.wordpress.com</a> Internet Source	<1 %
14	<a href="http://www.eje.cz">www.eje.cz</a> Internet Source	<1 %
15	<a href="http://academic.oup.com">academic.oup.com</a> Internet Source	<1 %
16	<a href="http://journals.plos.org">journals.plos.org</a> Internet Source	<1 %
17	<a href="http://link.springer.com">link.springer.com</a> Internet Source	<1 %
18	<a href="http://pub.uni-bielefeld.de">pub.uni-bielefeld.de</a> Internet Source	<1 %
19	<a href="http://www.nature.com">www.nature.com</a> Internet Source	<1 %
20	<a href="http://www.tandfonline.com">www.tandfonline.com</a> Internet Source	<1 %

---

Exclude quotes On

Exclude matches Off

Exclude bibliography On

