

← Kembali ↶ ↷ →

📁 Arsipkan 📁 Pindahkan 🗑️ Hapus 🛡️ Spam ⋮

▲ ▼ ✕

Submission Journal

Yahoo/Ter kirim ☆

EN erick nugraha <nugraha_eriq1@yahoo.co.id>
Kepada: Eni Kovacs, Mag Ioan Valentin

🖨️ 🔗 Sab, 3 Apr 2021 jam 21.22 ☆

Dear Dr. Eni,
I Send My manuscript to submit in your Journal With Tittle...

Sea Surface Temperature and Chlorophyll-A Concentrations From Modis Satellite Data and Presence of Cetaceans in Savu, Indonesia

Thank you so much.

Best regards,

Erick Nugraha
Jakarta Technical University of Fisheries

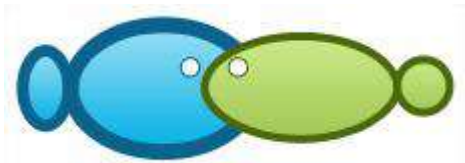
📄 Unduh semua lampiran sebagai file zip



Sea Surf... .docx
8.6MB



Submission I...pdf
177.9kB



Sea Surface Temperature and Chlorophyll-A Concentrations From Modis Satellite Data and Presence of Cetaceans in Savu, Indonesia

¹Jahved Ferianto Maro, ¹Agus Hartoko, ¹Sutrisno Anggoro, ¹Max Rudolf Muskananfolo, ²Erick Nugraha

¹Faculty Fisheries and Marine Science, Coastal Resources Management Doctoral Programme, Diponegoro University, Semarang, Indonesia; ²Faculty of Fishing Technology, Jakarta Technical University of Fisheries, South Jakarta, Indonesia; Corresponding author: E. Nugraha, nugraha_eriq1@yahoo.co.id

Abstract. The study postulated that the presence of cetacean in the Savu seas was in accordance pattern of sea surface temperature (SST) and chlorophyll-a concentrations as indicator favourable seawater temperature and presence of its natural diet. Aim of study was to analyze the monthly average sea surface temperature (SST) and chlorophyll-a of January – December 2018 of the MODIS Aqua satellite data and field validation for the May 2018, and cetacean sighting surveys in Savu seawater. Results of field SST data measurement was ranged from 26.4-30.5°C. SST of satellite data was ranged from 26.7– 31.4°C and chlorophyll-a concentration was ranged from 0.5 - 0.83 mg/m³. Field cetacean observations had identified four dolphins and two whales species, namely the bottlenose dolphin (*Tursiops truncatus*), Fraser's dolphin (*Lagenodelphis hosei*), pantropical spinner dolphin (*Stenella longirostris*), and pantropical spotted dolphin (*Stenella attenuata*). Two species of whales found were the pygmy feresa whale (*Feresa attenuata*) and pygmy sperm whale (*Kogia breviceps*) from 12 field survey points.

Keywords : Oceanographic Variables, Cetaceans, Remote Sensing

Introduction. Indonesian seawaters inhabited by 31 species of cetaceans and the dugong (Rosas *et al.*, 2012). These marine mammals are spread from the coast to the deep sea of Indonesia, showing both resident and migratory behaviour (Salim, 2011). Several species of cetaceans with migratory behaviour occupy the eastern part of Indonesia seawaters and their migratory pathways extend from the Indian to Pacific Ocean through the straits of Komodo island, Solor, Lembata, Alor, Wetar, Banda Sea, southeast Sulawesi, east Sulawesi, and Sorong of Papua island at the north (Salim, 2011). The eastern part of Indonesia seawaters especially in some inter islands have functioned as the entry point strait for cetaceans as well as some species of sea turtles. At present, most of the world's attention is given to the issue of protection, presence observation, migratory and distribution patterns of marine mammals, especially for cetaceans (Dréo *et al.*, 2019). The issues mainly in regard the declining population of cetaceans caused by human activities, such as illegal fishing, pollution, and environmental degradation (González *et al.*, 2019; Sutton *et al.*, 2019). Indepth and holistic research of cetacean ecology and migratory pathways in Indonesia is very limited and thus is very badly needed as the basis for its conservation.

Savu sea belongs to the province of East Nusa Tenggara (ENT), with extension areas up to Indonesia's Exclusive Economic Zone (EEZ), next to the west coast borders of Timor Leste National Marine Park of East Nusa Tenggara. Areas Savu Sea (2018); (Putra *et al.*, 2016). Savu sea has unique seawater conditions with a significant increase in sea surface

temperature (SST) during the southeast monsoon, and low SST during the east monsoon. The dynamics on seawater mass displacement occur in the surface layer with a dynamic pattern of seawater temperature vertically and results in an upwelling process, as well as a horizontal mixing process due to the monsoonal wind pattern in Savu sea. The impact of the vertical seawater upwelling process triggers the seawater nutrient enrichment and phytoplankton biomass at the upper layer on shallow straits and along the coastal area Sediadi, 2004; Packard *et al.*, 2015).

The following significant impact of SST, the upwelling and abundance of plankton biomass naturally (Mujiyanto *et al.*, 2017 and which is copepod and small crustacean mainly attracts groups of cetaceans to migrate into the Savu sea through the Lembata, Alor and Wetar straits (Hartoko, 2013). The study of Priyadarshana *et al.*, (2016) using MODIS Aqua satellite imagery and field surveys in the Gulf of Sri Lanka had found that the cetacean distribution and migratory pattern was mainly for feeding. In the Indian Ocean studies have reported the presence of sperm whales in depths up to 20 m swimming toward the beach for feeding (Reisinger *et al.*, 2015; Citta *et al.*, 2018; Stepanuk *et al.*, 2018;).

Holistic research data on cetaceans were currently badly needed by the government of East Nusa Tenggara Province for a sustainable integrated Savu sea management. The accurate, comprehensive, and integrated scientific research report based on research based evidence data of oceanographic variables such as sea surface temperature, current pattern, upwelling, plankton abundance and data related to the cetacean in the Savu sea. Documented observations of cetacean behavior have reported blowing, logging, fluking, flipper-slapping, slap, spy-hopping, breaching and feeding were needed (Kahn, 2016).

Remote sensing technology is one method which has potential to be effective in conducting surveys over large areas and in narrow straits (Hartoko *et al.*, 2019). The satellite data used in this study was MODIS AquaTerra, for SST and chlorophyll-a in the Savu seawater. The aim of the study was to conduct spatial analysis and determine monthly ranges of SST and chlorophyll-a and its relationship to the appearance of cetaceans in Savu seawater within East Nusa Tenggara Province for possible recommendations for sustainable management by local government.

Materials and Method

Field cetacean surveys line boat track were conducted over 10 days in November 2018 with 12 survey points along the Savu sea, East Nusa Tenggara Province, Indonesia as presented in Figure 1.

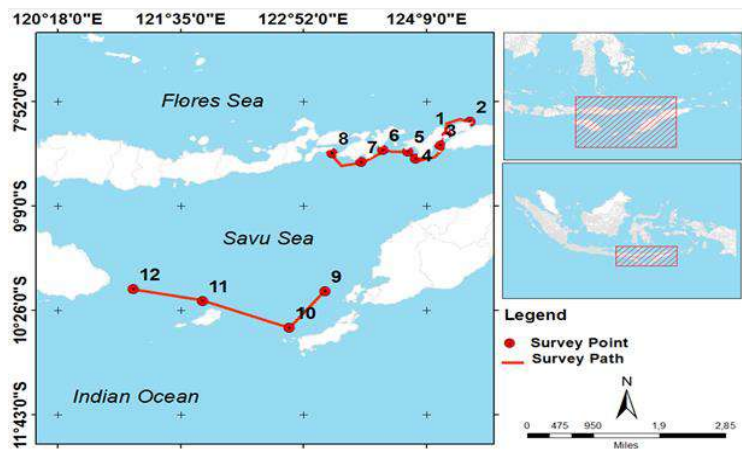


Figure 1. Station points of the field survey

Aquatic Conservation Agency survey boat for surveyors sightings, Global Positioning System (GPS) to marks survey points coordinates, Nikon D5500 Camera for cetacean sighting documentations, Drone for aerial survey boat and cetacean sighting documentations, Water Quality Checker to measure in-situ sea water temperature, Binoculars for cetacean sighting identification, Hydrophone, Cetacean Identification Book for cetacen species identification, ArcMap 10.3, SeaDas 7.3, and Er-Mapper software for satellite data processing. The MODIS AquaTerra level-3 of ASCII data file was downloaded from NASA link <https://oceancolor.gsfc.nasa.gov> (2019) NASA for sea surface temperatures and chlorophyll-a data analysis.

Field Survey Method

Field observations used methodology similar to (Guinet *et al.*, 2009; Kahn. 2016; Forney and Barlow. 1998; Diogou *et al.*, 2019; Perrin *et al.*, 2018) The use of the zigzag method aims to obtain an estimate of cetacean density and avoid glare from the sun. The method of field observation of the observer group consisted of 4 observers who were placed on the front deck, on the left, center and right side of the boat. The design of the observation design drawing can be seen in Figure 2. The required field data is recorded and recorded in the logbook and returned to the original track. Field data and information recorded are date and time of appearance of cetaceans, GPS position, angle of cetacean position to boat, relative distance of cetaceans from boats, cetacean swimming direction, species, number, sea surface temperature, chlorophyll-a and cetacean behavior.

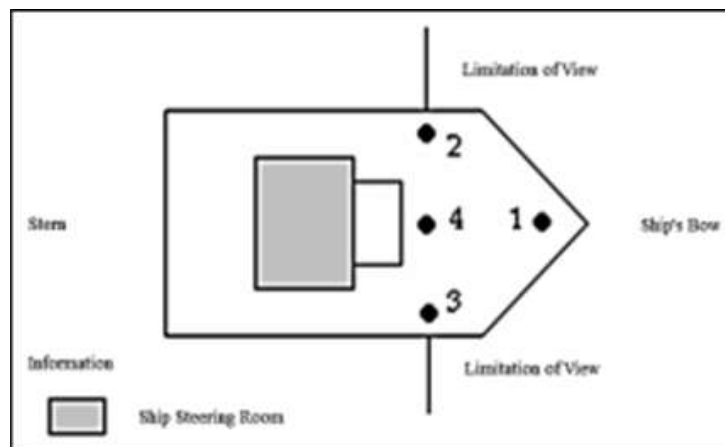


Figure 2. On board observer positions during survey

Acquisition of Satellite Data

Acquisition of MODIS Aqua Terra satellite level 3 data used in the study were downloaded from National Aeronautics and Space Administration (NASA, 2018) for the sea surface temperature (SST) and chlorophyll-a data. The study used original spectral of ASCII format level 3 data which then processed using SeaDas 7.3 software. Following a process of cropping at the focused research area of Savu sea.

Satellite Data Processing Method and Analysis

The first step of satellite raw data processing was involving data transform from the original satellite raw data in a numeric ASCII format consisting of coordinates and SST or chlorophyll-a data, then transformed into a spatial layer using interpolation process based on a geo-statistic gridding method using ErMapper and ArcGIS 10.3 software (Hartoko and Helmi, 2004; Hartoko *et al.*, 2019; Dréo *et al.*, 2019).

Result and Discussion

Distribution Sea Surface Temperature

Sea surface temperature was measured by using Water Quality Checker at 12 stations range from 26.4–30.5°C as shown in Figure 3A. Sea surface temperature based on MODIS AquaTerra satellite data was in the range from 26.7–31.4°C as shown in Figure 3B below.

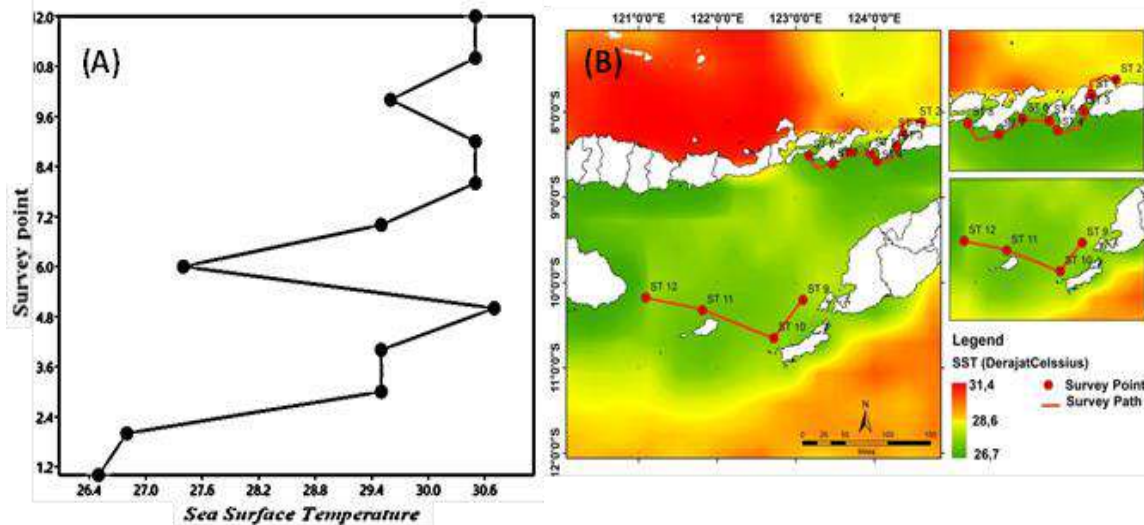


Figure 3. Distribution of SST from November 2018 Field Measurement (Figure 3A) and Monthly Distribution of MODIS AquaTerra satellite (3B) November 2018

While analysis of MODIS AquaTerra satellite in November 2018 resulted in a range SST from 26.7 – 31.4°C. The position of stations 1 to 8 was aimed to represent the Alor strait, stations 7 and 8 represent the Lembata – Lamalera strait and stations 9 – 12 represent the Sawu strait and Rote Islands as the entrance gate of the Indian ocean into the Savu sea.

The east monsoon of November 2018 is regarded as the peak cetacean presence, in comparison with a lower MODIS satellite SST during the west monsoon of January 2018. More precisely that the recorded SST in the Savu sea during the cetacean presence event in November 2018 in the 26.7 – 28.6°C was exhibit a cooled-pool seawater mass, the compared to the SST range of 28.6 – 31.4°C outside of the Savu sea Can be seen on Figure 3B. The results of monthly SST analysis for 1 year using MODIS AquaTerra data found that the lowest SST detected during July can be seen in Figure 4 with a temperature range of 26 - 27°C.

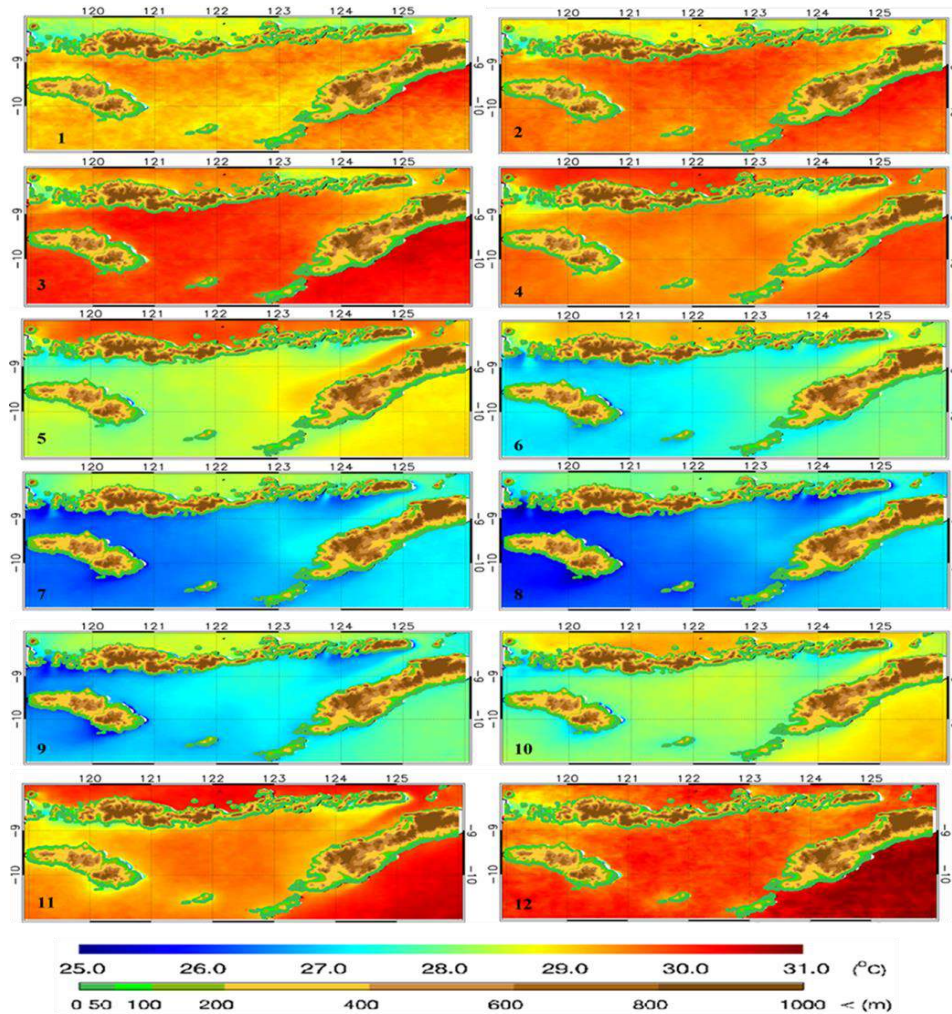


Figure 4. Monthly average of SST MODIS satellite January – December (1 Monthly - 12 Monthly) 2018 in Savu Sea

The range of SST recorded before the cetacean presence event in January 2018 was in the range of 27 - 32.5°C. The average range higher SST before (January 2018) the cetacean sighting event in November 2018 was regarded as more seawater mixing process in the Savu sea.

Spatial distribution of chlorophyll-a

Spatial monthly chlorophyll-a concentration analysis of the using of level-3 MODIS AquaTerra satellite data in the Savu sea during the cetacean presence event in November 2018 was in the range of 0.5-0.83 mg/m³ (Figure 5).

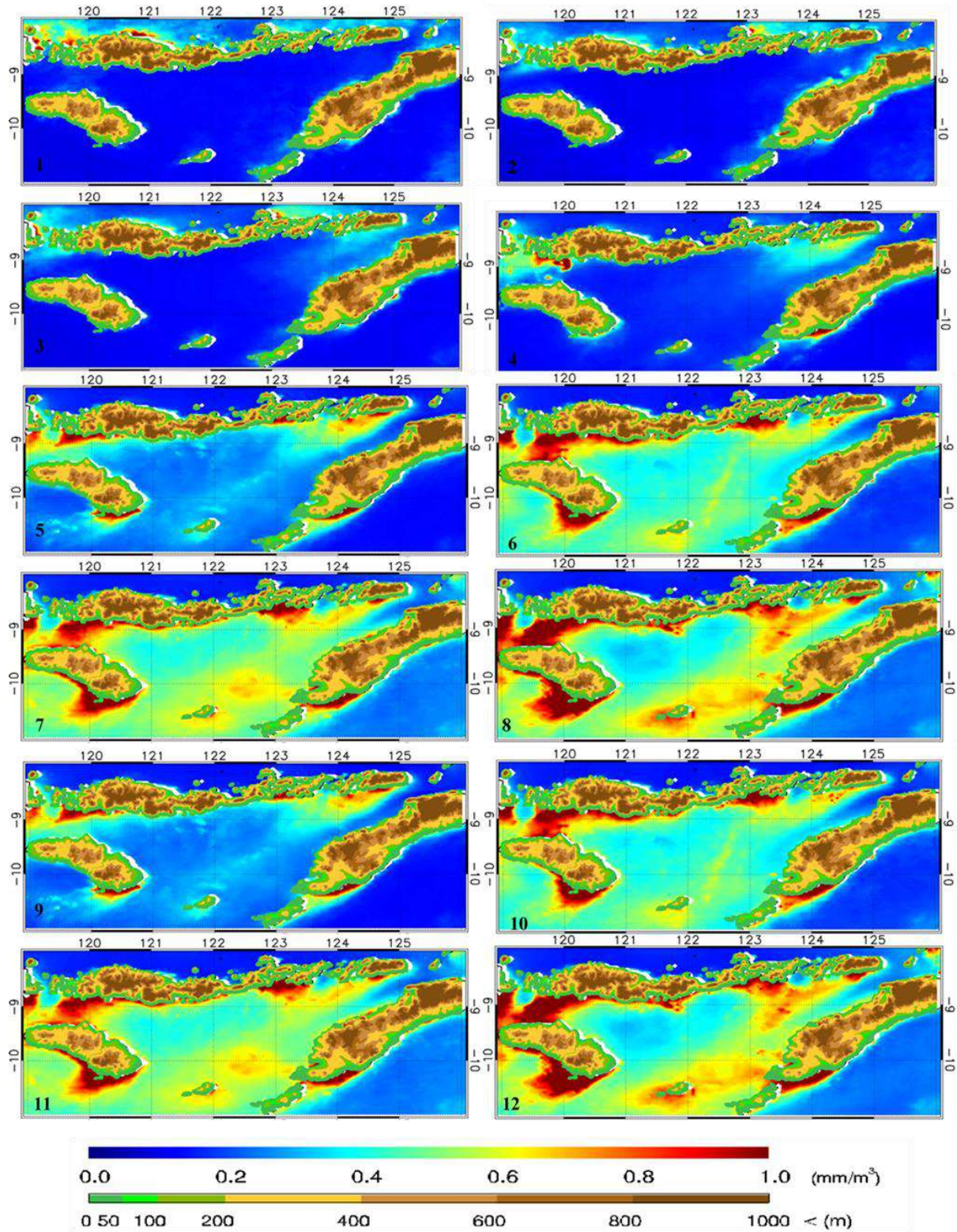


Figure 5. Monthly average of chlorophyll-a MODIS Satellite Jan–Dec 2018 at Savu sea.

In comparison, the chlorophyll-a concentration during the event was higher than the concentration during the west-monsoon in January 2018 (before cetacean presence in November 2018) which was found to be in the range of 0.34 – 0.65 mg/m³, as well as during the west monsoon of January 2019 after the peak season, which was in the range of 0.05 – 1.24 mg/m³ can be seen in Figure 6A and Figure 6B.

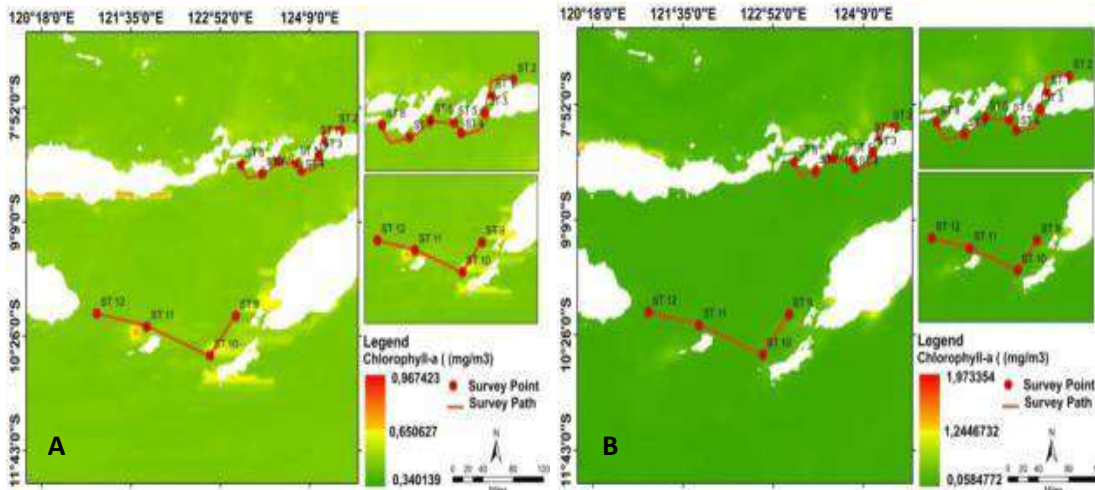


Figure 6. Spatial distribution of chlorophyll-a concentration in January 2018 (A) and January 2019 (B) in the Savu sea.

Both before and after the peak cetacean period, the seawater chlorophyll-a was spread evenly inside and outside of the Savu sea. The results of SST and Chlorophyll-a data extraction from the Aqua MODIS satellite in the waters of the Savu Sea in 2018 in order to compare the SST and Chlorophyll-a distribution data for the emergence of cetaceans can be seen in Figure 7A and Figure 7B.

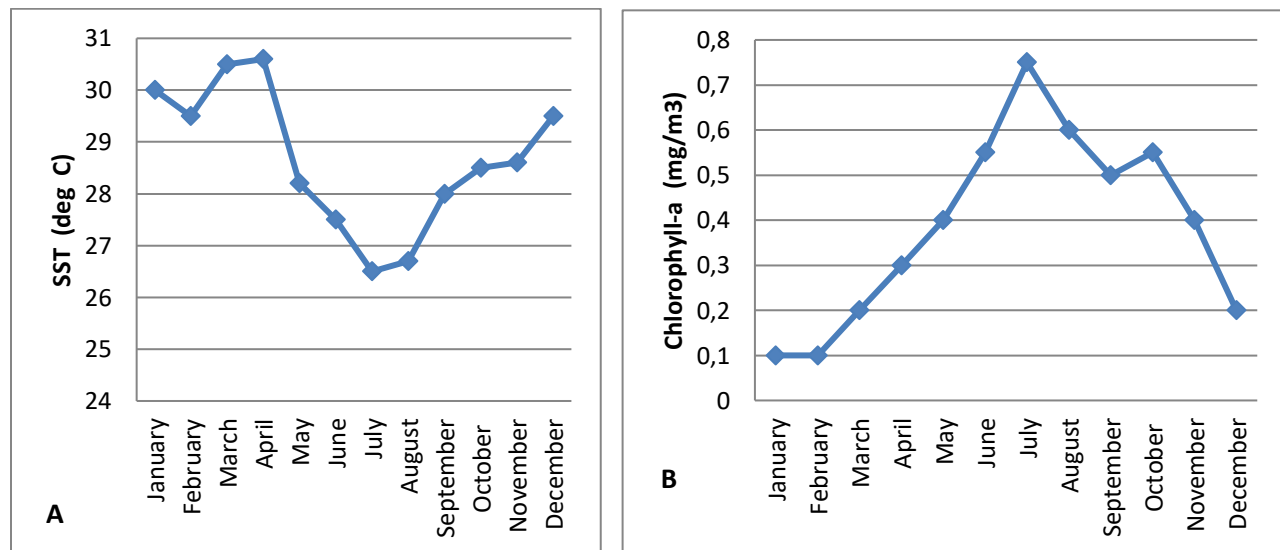


Figure 7. Variation in average SST (A) and Variation in average Chlorophyll-a (B) January – December 2018 of MODIS Satellite data

Judging from Figures 7A and 7B it can be said that the decrease in SST in April-July is in the range of 28 - 26°C with the chlorophyll-a range increasing from February to July in the range of 0.1 - 0.8 mg/m³. The presence of cetaceans in Savu waters in November 2018 is in accordance with the data on average monthly SST and monthly chlorophyll-a variations from the MODIS satellite, which shows that SST ranges between 28.5°C and Chlorophyll-a ranges between 0.4 mg/m³.

Field Cetacean Sightings in the Savu seawater

Field observations in the Savu Sea during November 2018 reported six species of cetaceans, four species of dolphins and two species of whales. Cetacean species and their percentage of appearance time in water bodies of each species are presented in Figure 8.

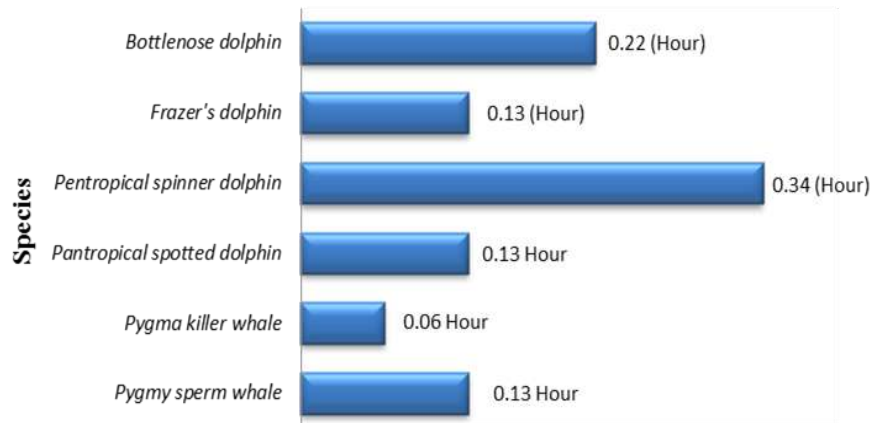


Figure 8. Types of cetaceans and time of appearance of cetaceans in the Savu Sea

Looking at the graph in Figure 8, it can be seen that 4 species of cetaceans were found, namely the Pantropical spinning dolphin (*Stenella longirostris*) which was recorded at survey points (ST) 1, 2, 3, 4, 6, 10, and 11 showing arcs, the bow, and the antenna goes around. Pantropical dolphins (*Stenella attenuata*) were recorded at survey points (ST) 1, 2, 3, and 5 showing air avoidance and air behavior. The whales recorded were dwarf killer whales (*Feresa attenuate*) and dwarf sperm whales (*Kogia breviceps*) at survey points (ST) 1, 2, 3, and 4 which exhibited avoidance and logging behavior. With an average appearance time in water bodies ranging from 0.6 - 0.34 hours. The emergence of cetaceans in the Savu Sea waters can be seen in Figure 9.



Figure 10. Dolphin (A and B) and whale (C and D) in the Savu sea during field observations

Discussion

The current study revealed that the cetacean sightings were in accordance with the field SST spatial distribution data in the range of 26.5-30.5°C during November 2018. The study assumed that the typical cool-pooled SST pattern recorded during November 2018 would be much different to the SST pattern during January 2018 and January 2019 with a homogenous evenly dispersed SST pattern in Savu sea and adjacent seawaters. Research by (Sutton *et al.*, 2019; Mustika, 2006; National Marine Park East Nusa Tenggara, 2018; Kahn, 2017), reported that the range of *in-situ* SST for cetaceans was between 25–33°C. This SST range was regarded also as the optimum temperature for plankton breeding, increasing the plankton density and biodiversity, then ecologically functions as the migratory attractant for feeding and reproduction of small fishes, cephalopods and ultimately attract cetaceans as the top predator in the food chain to come to the area. Similar research by (Frantzis *et al.*, 2011), showed that whales and dolphins were migrating to feed on plankton and prey rich seawater.

The high level of primary productivity in Savu sea has caused unique oceanographical phenomena based on the combination of the SST (Figure 3A, 3B, 4 and 7A) and chlorophyll-a in the seawater mass (Figure 5, 6A, 6B and 7B). It is assumed that the vertical current movement from the south Indian ocean entered through the strait between Savu and the Rote Islands and resulted in an upwelling through the main Lamalera, Alor, and Wetar straits. Further northward seawater mass from Indian ocean has developed horizontal mixing process with the Pacific ocean water mass at Banda sea and results with nutrient rich seawater mass. This results of high nutrients and primary productivity in the Savu sea by means of phytoplankton biomass was also confirmed by the MODIS satellite chlorophyll-a data as in Figure 5. Previous research indicates that the Savu sea has a high level of primary productivity as result of vertical mixing of cool Indian ocean under currents that move upward into the Savu sea which brings high nutrients from the deeper water column.

The mixing of the cold Indian ocean with the warm Pacific ocean water increases the nutrient concentration and primary production in the Savu sea (Suton *et al.*, 2019; (Li and Yu, 2020). These favourable ecological conditions have attracted and directed the migratory pattern of some pelagic fish and other migratory species for feeding (Hartoko and Helmi. 2004); (Chung and Gong, 2019); (Lyu *et al.*, 2016). Result of MODIS satellite chlorophyll-a concentration in the range of 0.06-0.87 mg/m³ during cetacean sightings in Savu sea in November 2018 was also conformed with the research of Putra *et al.* (2016); (Huo *et al.*, 2020); stated that the optimal chlorophyll-a concentrations in the range of 0.02-0.7 mg/m³, and categorised as a fertile or rich of nutrient seawater.

The high primary productivity in seawater will increase the biomass of small fish species and squid (*cephalopods*), regarded as the main prey and ultimately attracts species of marine mammals such as whales and dolphins to migrate for feeding (Simond *et al.*, 2019). The current study revealed that the range of chlorophyll-a concentration inside the Savu sea 0.6-0.8 mg/m³ was found to be ten fold higher than those at surrounding areas in the Indian ocean with only 0.06 mg/m³. The two species of whales and four species of dolphins observed in the current study were assumed to be suitable with this favourable current mixing areas (FCMA) in the Savu sea, with high primary productivity and optimum sea surface temperatures (Hartoko. 2009; Hartoko. 2010; Suton *et al.*, 2019). The presence of cetaceans with behavior of bow riding traveling, bow riding, feeding riding and aerials in the FCMA in the Savu sea was regarded to the migratory behaviour and instinct for feeding (Diogou *et al.*, 2019; Rudolph *et al.*, 1997; Kahn, 2017).

The two whale species and four dolphin species observed in this study correspond to a favorable current mixing area with high primary productivity and optimal sea surface temperature (Sutton *et al.* 2019). Sightings of the bottlenose dolphin (*Tursiops truncatus*) were found at stations 2, 4 and 7 with bow-riding behavior. Fraser's dolphin (*Lagenodelphis hosei*) was found at stations 1, 2, 4, 5, 12 with the Bow and Air behavior. The pantropical spinning dolphin (*Stenella longirostris*) was found at stations 1, 2, 3, 4, 6, 10, 11 with Bow, Traveling, Bow Riding, and Aerial behavior. The pantropical leopard dolphin (*Stenella attenuata*) was found at stations 1, 2, 3, 5 with Air and Air Avoidance behavior. Based on field observation data, dolphins were found in the sea surface temperature range of 26.4 - 30.5°C and chlorophyll a ranged from 0.3-0.6 mg/m³. The dwarf killer whale (*Feresa attenuate*) and the dwarf sperm whale (*Kogia breviceps*) were found at stations 1, 2, 3, 4 with Avoidance and Logging behavior, corresponding to a sea surface temperature range between 26.4 - 28.7°C and chlorophyll 0.2-0.8 mg/m³. The average appearance of cetaceans in the Savu Sea waters ranges from 0.6 - 0.34 hours. Cetacean Behavior Traveling by Bow, Bow, Eating, and Space Types of cetaceans in marine waters in particular and appearing to the surface with an average time span of 0.5 - 0.55 hours show migratory feeding and reproducing behavior (Rudolph, *et al.* 1997); (Diogou, *et al.* 2019).

Conclusions

The cool seawater phenomena based field SST spatial distribution in November 2018 in the Savu sea ranged 26.4 - 30.5°C was regarded as the main influencing oceanographic variable in presence, sightings and migrating path of cetacean at the Savu sea. The satellite chlorophyll-a concentration in the range of 0.06-0.87 mg/m³ the Savu sea in November 2018. Four species of cetaceans found are bottlenose dolphins (*Tursiops truncatus*), Fraser's dolphins (*Lagenodelphis hosei*), pygmy spinning dolphins (*Stenella longirostris*), pantropical spotted dolphins (*Stenella attenuata*). Two species of whales found are pygmy killer whales (*Feresa attenuate*) and pygmy sperm whale (*Kogia breviceps*).

Acknowledgements. The authors would like to thanks the Local Government of East Nusa Tenggara Province, the Office of World Wildlife Fund for Nature (WWF) at Solor-Alor. Sincere thanks to the LPDP Indonesian Government scholarship for Jahved Ferianto Maro and the

Doctoral Program of Coastal Management, Faculty of Fisheries and Marine Sciences and the Institute of Research and Community Services. Diponegoro University, Semarang, Indonesia for funding support on contract no. 233-39/UN7.6.1/PP/2020. Special thanks to the National Aeronautics and Space Administration (NASA) for the use of MODIS AquaTerra satellite data and the SeaDas software application, and to ESRI for the uses of ArcGis 10.3 software to process satellite data and to all other parties for their help and contributions.

References

- Citta J J., Okkonen S.R, Quakenbush L.T, Maslowski W, Osinski R, George J.C, Small R.J, Brower H, Mads Peter Heide and Harwood L.A. (2018). Oceanographic Characteristics Associated with Autumn Movements of Bowhead Whales in the Chukchi Sea. *Deep-Sea Research Part II*. (152) 121 – 131.
- Chung C. C. and Gong, G. C. (2019) 'Attribution of the growth of a distinct population of *Synechococcus* to the coverage of lateral water on an upwelling', *Terrestrial, Atmospheric and Oceanic Sciences*.
- Diogou N, Palacios D.M, Nieu Kirk S.L, Nystuen J.A, Papathanassiou E, Katsanevakis S and Klinck H. (2019). Sperm Whale (*Physeter macrocephalus*) Acoustic Ecology at Ocean Station PAPA in the Gulf of Alaska – Part 1 : Detectability and Seasonality. *Deep-Sea Research Part I*. (150) 103 – 147
- Dréo, Richard, Bouffaut L, Leroy E, Barruol G and Samaran F. (2019). Baleen Whale Distribution and Seasonal Occurrence Revealed by an Ocean Bottom Seismometer Network in the Western Indian Ocean. *Deep-Sea Research Part II: Topical Studies in Oceanography*. (16) 132 – 144.
- Frantzis A., Airoidi S, Notarbartolo-di-sciara G, Johnson C and Mazzariol S. (2011). Inter-Basin Movements of Mediterranean Sperm Whales Provide Insight into Their Population Structure and Conservation. *Deep-Sea Research Part I*. 58(4) 454 – 459.
- Forney K. A and Barlow J. (1998). Seasonal Patterns in the Abundance and Distribution of California Cetaceans, 1991-1992. *Marine Mammal Science*. 14(3) 460 – 489.
- González C, Victoria, Piola A, O'Brien T.D, Tormosov D.D and Acha E.M. (2019). Circumpolar Frontal Systems as Potential Feeding Grounds of Southern Right Whales. *Progress in Oceanography*. (176) 102-123.
- Guinet C, Taupier-letage I, Mate B, Petiau E. (2009). Scale-Dependent Habitat Use by a Large Free-Ranging Predator, the Mediterranean Fin Whale. *Deep-Sea Research I*. (56) 801 – 811.
- Hartoko A., 2013. Oceanographic Characters and Plankton Resources of Indonesia. Graha Ilmu. ISBN : 978-979-756-957-0.
- Hartoko A. and Helmi M. (2004). Development of Digital Multilayer Ecological Model for Padang Coastal Water West Sumatra. *J of Coastal Management*. 7(3) 129 – 136.
- Hartoko A. (2009). Ocean Observation on SST Variability and Sub-Surface Sea Water Temperature off The North Papua the Fate of El_Nino 1997 & 2007 and La Nina 2002 : Field Measurement and TRITON Buoy Data. *Journal of Coastal Development*. ISSN.1410-5217. 13(1) 1 – 10.
- Hartoko A. (2010). Spatial Distribution of *Thunnus.sp*, Vertical and Horizontal Sub-surface Multilayer Temperature Profiles of *in-situ* ARGO Float Data in Indian Ocean. *Journal of Coastal Development*. ISSN.1410-5217. 14(1) 1 – 14.
- Hartoko A., Febrianto A, Pamungkas A, Fachruddin I, Helmi M and Hariadi. (2019). The Myth and Legend of Sadai and Gaspar Strait Bangka Belitung (Banca-Billiton) and Oceanographic Conditions. *International Journal of GEOMATE*. 17(62) 212 –218.
- Huo Y., Liu Q., Zhang F., Li C., Tao Z., Bi H., Fan C., Zhang J., and Sun S. (2020). 'Biomass and estimated production, and feeding pressure on zooplankton of chaetognaths in the Yellow Sea, China', *Terrestrial, Atmospheric and Oceanic Sciences*. 61-75.

- Kahn B. (2017). Blue Whales of the Savu Sea, Indonesia. Indonesia. Paper presented at the 17th Biannual Marine Mammal Conference - Blue Whale Workshop. Cape Town, South Africa. 28 Nov – 3 Dec 2017.
- Kahn B. (2016). Oceanic Cetaceans & Associated Habitats Solomon Islands Marine Assessment. Published : The Nature Conservancy, Indo-Pacific Resource Centre. 5 – 15.
- Li Y.X. and Yu J.Y. (2020) 'Why rare tropical cyclone formation after maturity of super El Niño events in the western North Pacific?', *Terrestrial, Atmospheric and Oceanic Sciences*.
- Lyu C.G., Tian J, Yang W.B., Tian Q.J., Lin Y.H., Liu Z.M., and Zhang H.M. (2016) 'Diurnal variation of solar-blind ultraviolet upwelling radiance led by observation geometry factors on geostationary attitude sensor limb viewing', *Terrestrial, Atmospheric and Oceanic Sciences*. 943-953.
- Mujiyanto, Riswanto and Nastiti A.S. (2017). Effectiveness of Sub Zone Cetacean Protection In Marine Protected Areas Savu. National, Sea, Marine Park, East Nusa Tenggara, Areas Savu, S.E.A. National, Marine Park, and East Nusa Tenggara. *Jurnal of Coastal and Ocean*. 1(2) 1 - 12.
- NASA. National Aeronautics and Space Administration. (2019). www.nasa.gov
- National Marine Park East Nusa Tenggara. Areas Savu Sea. (2018). Effectiveness of Sub Zone Cetacean Protection In Marine Protected Areas of Savu Sea. Research Report.
- Packard T, Osma N, Fernández-Urruzola I, Codispoti L.A, Christensen J.P & Gómez M. (2015). Peruvian upwelling plankton respiration: calculations of carbon flux, nutrient retention efficiency, and heterotrophic energy production. *Biogeosciences*. (12) 2641 – 2654.
- Perrin W.F., Mallette S.D and Brownell R.L. (2018). Minke Whales. *Encyclopedia of Marine Mammals*. (Third edition) : *Balaenoptera acutorostrata* and *B. bonaerensis*. pp : 608 – 613.
- Priyadarshana T, Randage S.M, Alling A, Calderan S, Gordon J, Leaper R and Porter L. (2016). Distribution Patterns of Blue Whale (*Balaenoptera musculus*) and Shipping off Southern Sri Lanka. *Regional Studies in Marine Science*. (3) 181 – 188.
- Putra M.I.H., Lewis S.A, Kurniasih E.M, Prabuning D, Faiqoh E. (2016). Plankton Biomass Models Based on GIS and Remote Sensing Technique for Predicting Marine Megafauna Hotspots in the Solor Waters. *IOP Conference Series: Earth and Environmental Science*. 47(1) 12 - 15.
- Reisinger R.R., Keith M, Andrews R.D, de Bruyn P.J.N. (2015). Movement and Diving of Killer Whales (*Orcinus orca*) at a Southern Ocean Archipelago. *Journal of Experimental Marine Biology and Ecology*. (473) 190 - 102.
- Rosas C. L., Gil M. N, Uhart M. M. (2012). Trace metal concentrations in Southern Right Whale (*Eubalaena australis*) at Península Valdés, Argentina. *Marine Pollution Bulletin*, 64(6)1255 – 1260.
- Rudolph P., Smeenk C and Leatherwood S. (1997). Preliminary Checklist of Cetacea in the Indonesian Archipelago and Adjacent Waters. *Jurnal of Zoologische Verhandelingen Leiden*. (312) 1 - 48.
- Salim D.(2011). Conservation of Marine Mammals (*Cetacea*) at Savu Sea. East Nusa Tenggara. *Marine Journal*. 4(1) 24 – 41.
- Sediadi A. (2004). Effect of Upwelling to the Abundance and Phytoplankton Distribution at Banda Sea. *Makara, Sains*. 8(2) 43 - 51.
- Simond A.E., Houde M, Lesage V, Michaud R, Zbinden D and Verreault J. (2019). Associations between Organohalogen Exposure and Thyroid- and Steroid-Related Gene Responses in St. Lawrence Estuary Belugas and Minke Whales. *Marine Pollution Bulletin*.(145) 174 – 184.
- Stepanuk J.E.F., Read A.J, Baird R.W, Webster D.L and Thorne L.H. (2018). Spatiotemporal Patterns of Overlap between Short-Finned Pilot Whales and the U.S. Pelagic Longline

Fishery in the Mid-Atlantic Bight : An Assessment to Inform the Management of Fisheries Bycatch. Fisheries Research .(208) 309 – 320.
Sutton A.L., K. Curt S. Jenner K.C.S and Jenner M.M. (2019). Deep-Sea Research Part II Habitat Associations of Cetaceans and Seabirds in the Tropical Eastern Indian Ocean. Deep-Sea Research Part II (166) 171 – 186.
Temperature Profiles of in-situ ARGO Float Data in Indian Ocean. Journal of Coastal Development. ISSN.1410-5217. 14(1) 1 – 14.

Received: xxxxxxxxxxxxxxxx 2021. Accepted: xxxx 2021. Published online: xxxxxxxx.

Authors:

Jahved Ferianto Maro, Fisheries and Marine Science Faculty, Coastal Resources Management Doctoral Program, Diponegoro University, Prof. Sudarto Street, Semarang, Central Java 50275, Indonesia, email : yantogiuntrib@gmail.com

Agus Hartoko, Fisheries and Marine Science Faculty, Coastal Resources Management Doctoral Program, Diponegoro University, Prof. Sudarto Street, Semarang, Central Java 50275, Indonesia, Email: agushartoko.undip@gmail.com

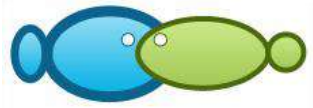
Sutrisno Anggoro, Fisheries and Marine Science Faculty, Coastal Resources Management Doctoral Program, Diponegoro University, Prof. Sudarto Street, Semarang, Central Java 50275, Indonesia, email : sutrisnoanggoro52@gmail.com

Max Rudolf Muskananfolo, Fisheries and Marine Science Faculty, Coastal Resources Management Doctoral Program, Diponegoro University, Prof. Sudarto Street, Semarang, Central Java 50275, Indonesia, email : maxmuskananfolo@yahoo.com

Erick Nugraha, Faculty of FishingTechnology, Jakarta Technical University of Fisheries, South Jakarta, Indonesia. email : nugraha_eriq1@yahoo.co.id

How to cite this article:

Jahved Ferianto Maro, Agus Hartoko, Sutrisno Anggoro, Max Rudolf Muskananfolo, Erick Nugraha, 2021 Sea Surface Temperature and Chlorophyll-A Concentrations From Modis Satellite Data and Presence of Cetaceans in Savu, Indonesia. AACL Bioflux



Submission letter

Article title:

Sea Surface Temperature and Chlorophyll-A Concentrations From Modis Satellite Data and Presence of Cetaceans in Savu, Indonesia

Name of the authors: Erick Nugraha

Hereby I would like to submit the manuscript entitled “**article title**” to Aquaculture, Aquarium, Conservation & Legislation - International Journal of the Bioflux Society.

This manuscript was not submitted or published to any other journal. The authors declare that the manuscript is an original paper and contain no plagiarised text. All authors declare that they are not currently affiliated or sponsored by any organization with a direct economic interest in subject of the article. My co-authors have all contributed to this manuscript and approve of this submission.

Corresponding author

Erick Nugraha

A handwritten signature in black ink, appearing to be 'Erick Nugraha'.

Date, April 04, 2021

← Kembali ↩ ↶ ↷

📁 Arsipkan 📁 Pindahkan 🗑 Hapus 🛡 Spam ...

▲ ▼ ✕

• Preliminary acceptance

Yahoo/Email M... ☆



• **Eni Kovacs** <ek.bioflux@gmail.com>
Kepada: erick nugraha

🖨 📧 Sab, 10 Apr 2021 jam 15.00 ☆

Dear Dr. Nugraha,

We would like to inform you that after the preliminary evaluation your paper is qualified for processing (reviewing).

Before proceeding to the review please consider that a processing publication fee of 250 USD is required. The average duration of the publication process is 10 weeks, but it can be reduced in exchange of a priority tax of 50 USD (<http://www.bioflux.com.ro/journal/>).

In case the manuscript is not published, the author or his/her institution is reimbursed (exceptions are made in the cases of poor feedback from authors or withdrawal/rejection due to multiple submissions).

Concerning the payment procedure, you will find all the details bellow and I would like to kindly ask you to send me the scanned receipt of the payment in order to start the publishing process. Upon reception of your payment receipt we will send you the invoice.

1st payment option:

Beneficiary:
Bioflux SRL
City: Cluj-Napoca ,
Country: Romania, European Union;

SWIFT CODE of the bank: BTRLRO22

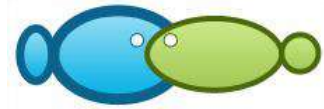
Account USD:
RO68BTRL01302202L28614XX

Bank:
BANCA TRANSILVANIA

Important! When bank transfer is used to pay a publication fee, please choose the right option, which is "US"! (among the three options you have: Ben, Our, Us). The option "Us" means that **all the transfer fees are at your charge**. Please note that in case you do not specify the "Us" option, the payment will not be valid.

2nd payment option:

via Pavoal. If you can process such a payment we can start the online form.



Bioflux (publishing house)
54 Ceahlau Street,
Cluj-Napoca 400488,
Romania, European Union

Certificate/Letter of preliminary acceptance

This certificate shows that your paper:
Sea Surface Temperature and Chlorophyll-A Concentrations From Modis Satellite Data and Presence of Cetaceans in Savu, Indonesia

Authors:

Jahved Ferianto Maro, Agus Hartoko, Sutrisno Anggoro, Max Rudolf Muskananfolo, Erick Nugraha

was preliminary accepted for publication, with revision, in volume 14 (2021) of the scientific/academic journal: Aquaculture, Aquarium, Conservation & Legislation – International Journal of the Bioflux Society.

AAAL Bioflux is covered by Thomson ISI Web of Knowledge via:

- Zoological Record (Biosis) and
- CAB Abstracts (CABI)

Thank you for publishing with us!

Sincerely yours,
Editor Researcher
Eniko Kovacs, PhD



← Kembali ↶ ↷ →

📁 Arsipkan 📁 Pindahkan 🗑️ Hapus 🛡️ Spam ⋮

☰ ▲ ▼ ✕

• Revision 2

Yahoo/Terkiirim ☆

E • **Eni Kovacs** ...concentrations from MODIS satellite data and presence...

📎 Jum, 30 Apr 2021 jam 14.52 ☆

EN • **erick nugraha** <nugraha_eriq1@yahoo.co.id>
Kepada: Eni Kovacs

🖨️ 📎 Min, 2 Mei 2021 jam 20.18 ☆

Dear Dr. Eni
I send you edited manuscipt.

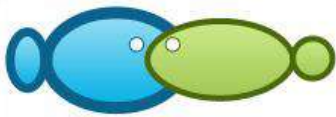
thank you

> Tampilkan pesan asli



E. Nugraha_... .doc
3MB

↶ ↷ → ⋮



Sea surface temperature and chlorophyll-a concentrations from MODIS satellite data and presence of cetaceans in Savu, Indonesia

¹Jahved F. Maro, ¹Agus Hartoko, ¹Sutrisno Anggoro, ¹Max R. Muskananfolo, ²Erick Nugraha

¹ Faculty Fisheries and Marine Science, Coastal Resources Management Doctoral Programme, Diponegoro University, Semarang, Indonesia; ² Faculty of Fishing Technology, Jakarta Technical University of Fisheries, South Jakarta, Indonesia. Corresponding author: E. Nugraha, nugraha_eriq1@yahoo.co.id

Abstract. This study demonstrated that the presence of cetacean in the Savu seas was in accordance with the patterns of sea surface temperature (SST) and chlorophyll-a concentrations, as indicators of a favourable seawater temperature and of the presence of its natural diet. The aim of this study was to analyze the monthly average sea surface temperature (SST) and chlorophyll-a from January to December 2018, base on the MODIS Aqua satellite data and on the field validation for May 2018, and on the cetacean sighting surveys in Savu seawater. Results of field SST data measurement ranged from 26.4 to 30.5°C. The SST satellite data ranged from 26.7 to 31.4°C and chlorophyll-a concentration ranged from 0.5-0.83 mg m⁻³. Field cetacean observations had identified four dolphins and two whales species, namely the bottlenose dolphin (*Tursiops truncatus*), Fraser's dolphin (*Lagenodelphis hosei*), pantropical spinner dolphin (*Stenella longirostris*) and pantropical spotted dolphin (*Stenella attenuata*). The two species of whales found were the pygmy feresa whale (*Feresa attenuata*) and pygmy sperm whale (*Kogia breviceps*) from 12 field survey points.

Key Words: oceanographic variables, cetaceans, remote sensing.

Introduction. Indonesian seawaters are inhabited by 31 species of cetaceans and the dugong (Rosas et al 2012). These marine mammals are spread from the coast to the deep sea of Indonesia, showing both resident and migratory behavior (Salim 2011). Several species of cetaceans with migratory behavior occupy the eastern part of Indonesia seawaters and their migratory pathways extend from the Indian to Pacific Ocean through the straits of Komodo Island, Solor, Lembata, Alor, Wetar, Banda Sea, southeast Sulawesi, east Sulawesi and Sorong (Papua island), at the north (Salim 2011). The eastern part of Indonesia seawaters, especially in some inter islands, have functioned as the entry point strait for cetaceans as well as for some species of sea turtles. At present, most of the world's attention is given to the issue of protection, presence observation, migratory and distribution patterns of marine mammals, especially for cetaceans (Dréo et al 2019). The issues mainly in regard the declining population of cetaceans caused by human activities, such as illegal fishing, pollution, and environmental degradation (González et al 2019; Sutton et al 2019). Indepth and holistic research on cetacean ecology and migratory pathways in Indonesia is very limited, although they constitute the basis for their conservation.

Savu Sea belongs to the province of East Nusa Tenggara (ENT), with extension areas up to Indonesia's Exclusive Economic Zone (EEZ), next to the west coast borders of Timor Leste National Marine Park of East Nusa Tenggara (Putra et al 2016). Savu Sea has unique seawater conditions with a significant increase in the sea surface temperature (SST) during the southeast monsoon and low SST during the east monsoon. The dynamics of seawater mass displacement occur in the surface layer due to a vertical dynamic pattern of seawater temperature resulting in an upwelling process, as well as in a horizontal mixing process due to the monsoonal wind pattern in Savu Sea. The impact

Commented [WU1]: The formatting requirements should be checked when submitting a manuscript to any Journal.

Commented [EN2R1]: Corrected. Thank you

of the vertical seawater upwelling process triggers the seawater nutrient enrichment and phytoplankton biomass at the upper layer on shallow straits and along the coastal area (Sediadi 2004; Packard et al 2015).

The SST has a significant impact, the upwelling and on the natural abundance of plankton biomass, copepods and small crustaceans (Mujiyanto et al 2017) groups of cetaceans which migrate into the Savu sea through the Lembata, Alor and Wetar straits (Hartoko 2013). The study of Priyadarshana et al (2016) using MODIS Aqua satellite imagery and field surveys in the Gulf of Sri Lanka had found that the cetacean distribution and migratory pattern was explained mainly by the foraging habits. In the Indian Ocean studies have reported the presence of sperm whales in depths up to 20 m swimming toward the beach for feeding (Reisinger et al 2015; Citta et al 2018; Stepanuk et al 2018).

Holistic investigations on cetaceans were necessary the marine authorities of East Nusa Tenggara Province for a sustainable management based on evidence data of oceanographic variables, such as: sea surface temperature, current pattern, upwelling, plankton abundance and data related to the cetaceans in Savu Sea, resulting in an accurate, comprehensive and integrated scientific research report. Documented observations of cetacean behavior have reported blowing, logging, fluking, flipper-slapping, slap, spy-hopping, breaching and feeding (Kahn, 2016).

Remote sensing technology is one method which has potential to be effective in conducting surveys over large areas and in narrow straits (Hartoko et al 2019). The satellite data used in this study was MODIS AquaTerra, for SST and chlorophyll-a in the Savu seawater. The aim of the study was to conduct spatial analysis and determine monthly ranges of SST and chlorophyll-a and their relationship to the presence of cetaceans in Savu seawater within East Nusa Tenggara Province, producing possible recommendations for a sustainable management by the local government.

Material and Method. Field cetacean boat track line surveys were conducted over 10 days in November 2018 with 12 survey points along the Savu sea, East Nusa Tenggara Province, Indonesia as presented in Figure 1.

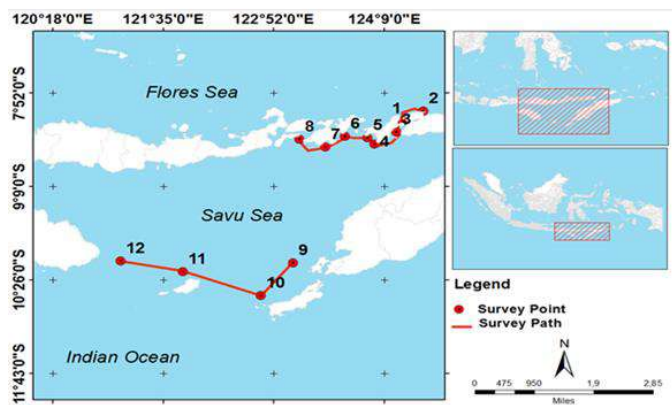


Figure 1. Station points of the field survey.

In this study we used several survey tools, including the Marine Conservation Agency survey boat for surveyor sightings, ~~Marine Conservation Agency survey boat for surveyor sightings~~, Aquatic Conservation Agency survey boat for surveyor sightings, Global Positioning System (GPS) to marks survey points coordinates, Nikon D5500 Camera for cetacean sighting documentations, Drone for aerial survey boat and cetacean sighting documentations, Water Quality Checker to measure in-situ sea water temperature, Binoculars for cetacean sighting identification, Hydrophone, Cetacean Identification Book for cetacen species identification, ArcMap 10.3, SeaDas 7.3, and Er- Mapper software for satellite data processing. The MODIS AquaTerra level-3 of ASCII data file was downloaded from NASA link <https://oceancolor.gsfc.nasa.gov> (2019) NASA for sea surface temperatures and chlorophyll-a data analysis.

Commented [WU3]: Please make complete phrases, using scientific English.

Field survey method. Field observations were based on a methodology used also by Guinet et al 2009, Kahn 2016, Forney & Barlow 1998, Diogou et al 2019, Perrin et al 2018. The use of the zigzag method aims to obtain an estimate of cetacean density and avoid glare from the sun. The method of field observation of the observer group consisted of 4 observers who were placed on the front deck, on the left, center and right side of the boat. The design of the observation experiment can be seen in Figure 2. The required field data is recorded and recorded in the logbook and returned to the original track. Field data and information recorded are date and time of appearance of cetaceans, GPS position, angle of cetacean position to boat, relative distance of cetaceans from boats, cetacean swimming direction, species, number, sea surface temperature, chlorophyll-a and cetacean behavior.

Formatted: Font: Not Italic

Formatted: Font: Not Italic

Formatted: Font: Not Italic

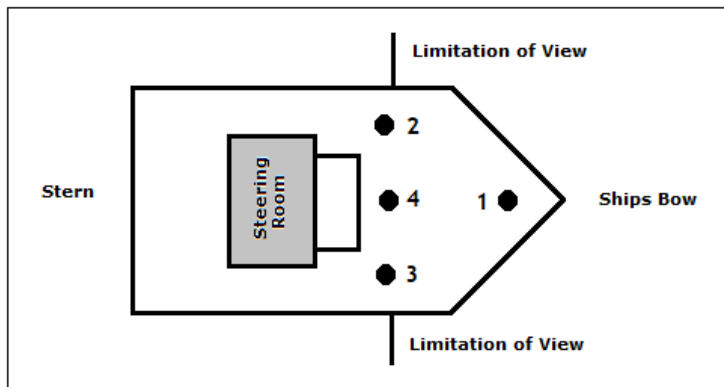


Figure 2. On board observer positions during survey.

Acquisition of satellite data. Acquisition of MODIS Aqua Terra satellite level 3 data used in the study were downloaded from National Aeronautics and Space Administration (NASA 2019 for the sea surface temperature (SST) and chlorophyll-a data. The study used original spectral of ASCII format level 3 data which was then processed using SeaDas 7.3 software and followed by a cropping at the level of the focused research area of Savu Sea.

Satellite data processing method and analysis. The first step of satellite raw data processing was involving data transform from the original satellite raw data in a numeric ASCII format consisting of coordinates and SST or chlorophyll-a data, then transformed into a spatial layer using an interpolation process based on a geo-statistic gridding method using ErMapper and ArcGis 10.3 software (Hartoko & Helmi 2004; Hartoko et al 2019; Dréo et al 2019).

Results

Distribution of sea surface temperature. Sea surface temperature was measured by using a water quality checker at 12 stations, in the range of 26.4 to 30.5°C (Figure 3A). Sea surface temperature based on MODIS AquaTerra satellite data was in the range of 26.7 to 31.4°C (Figure 3B), while analysis of MODIS AquaTerra satellite in November 2018 resulted in a SST range of 26.7 to 31.4°C. The position choice of stations 1 to 8 was intended to represent the Alor strait, stations 7 and 8 the Lembata–Lamalera strait and stations 9 to 12 the Sawu strait and Rote Islands, as the entrance gate of the Indian Ocean into the Savu Sea.

The east monsoon of November 2018 is regarded as the peak of the cetacean presence, in comparison with a lower MODIS satellite SST observed during the west monsoon of January 2018. More precisely, the recorded SST in the Savu Sea during the cetacean presence event in November 2018 was in the 26.7 to 28.6°C, exhibiting a cooled-pool seawater mass, compared to the SST range of 28.6 to 31.4°C outside of the Savu Sea Can, as can be seen on Figure 3B.

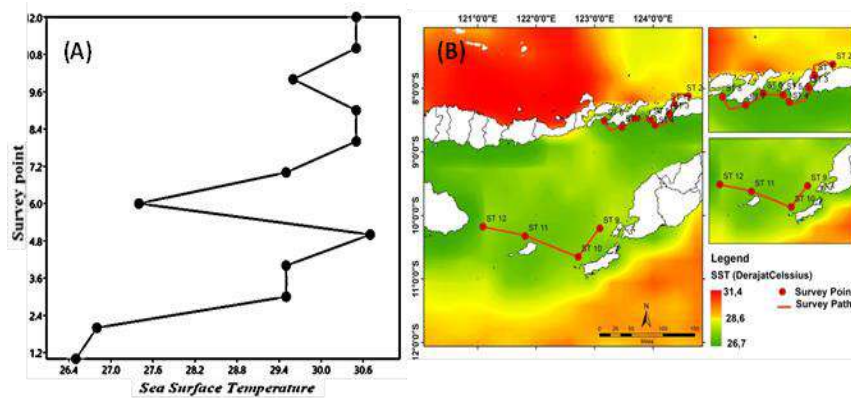


Figure 3. Distribution of SST from November 2018 field measurement (Figure 3A) and monthly distribution of SST data from the MODIS AquaTerra satellite (3B), in November 2018.

The results of the monthly SST analysis for 1 year using MODIS AquaTerra data found that the lowest SST detected was recorded during July, with a temperature range of 26 to 27°C (Figure 4).

The range of SST recorded before the cetacean presence event in January 2018 was in the range of 27 to 32.5°C. ~~The average range higher SST before (January 2018) the cetacean sighting event in November 2018 was regarded as more seawater mixing process in the Savu Sea.~~ **The average SST range was higher in December and January 2018. Cetacean sightings in November 2018 were assessed due to the increasing number of seawater mixing processes in the Savu Sea due to the west monsoon winds. The impact is upwelling so that the Savu Sea has a warm and nutrient-rich SPL. Therefore, cetaceans come to the Savu Sea to find food.**

Commented [WU4]: Reformulate and clarify this phrase

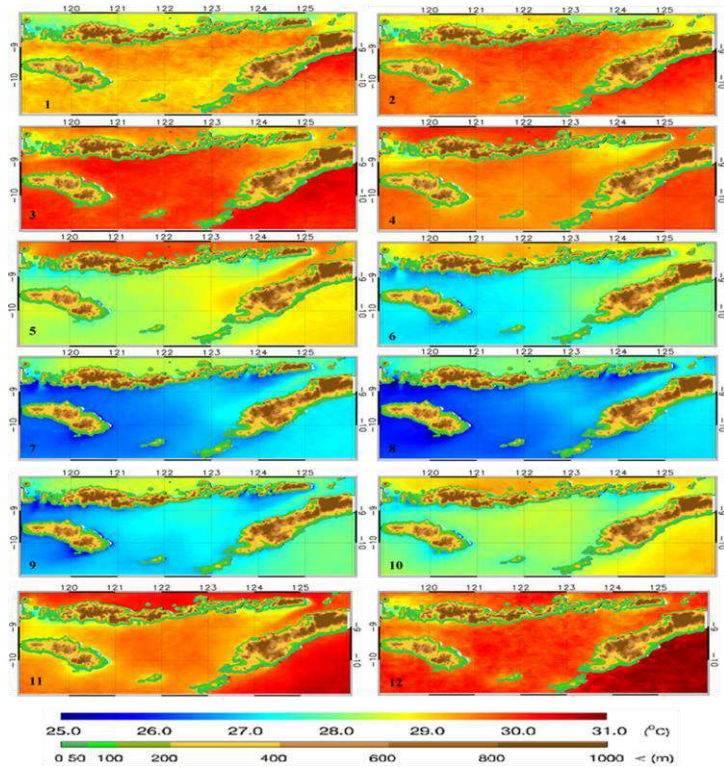


Figure 4. Monthly average of SST data from the MODIS satellite, in January to December 2018 in Savu Sea.

Spatial distribution of chlorophyll-a.—Spatial monthly chlorophyll-a concentration, analyzed from level 3 MODIS AquaTerra satellite data in the Savu Sea during the cetacean presence event in November 2018, was in the range of 0.5–0.83 mg m⁻³ (Figure 5). Monthly spatial analysis of chlorophyll-a concentrations using the Aqua Terra MODIS level 3 satellite data downloaded on the official NASA link <https://oceancolor.gsfc.nasa.gov>. Then the chlorophyll-a data were analyzed by the IDL application using the kriging analysis method, so it was found that the chlorophyll-a concentration in the Savu Sea was in the range of 0.5–0.83 mg m⁻³ when cetaceans appeared in November 2018 in the Savu Sea. (Figure 5).

Commented [WU5]: Please provide more details and interpretations.

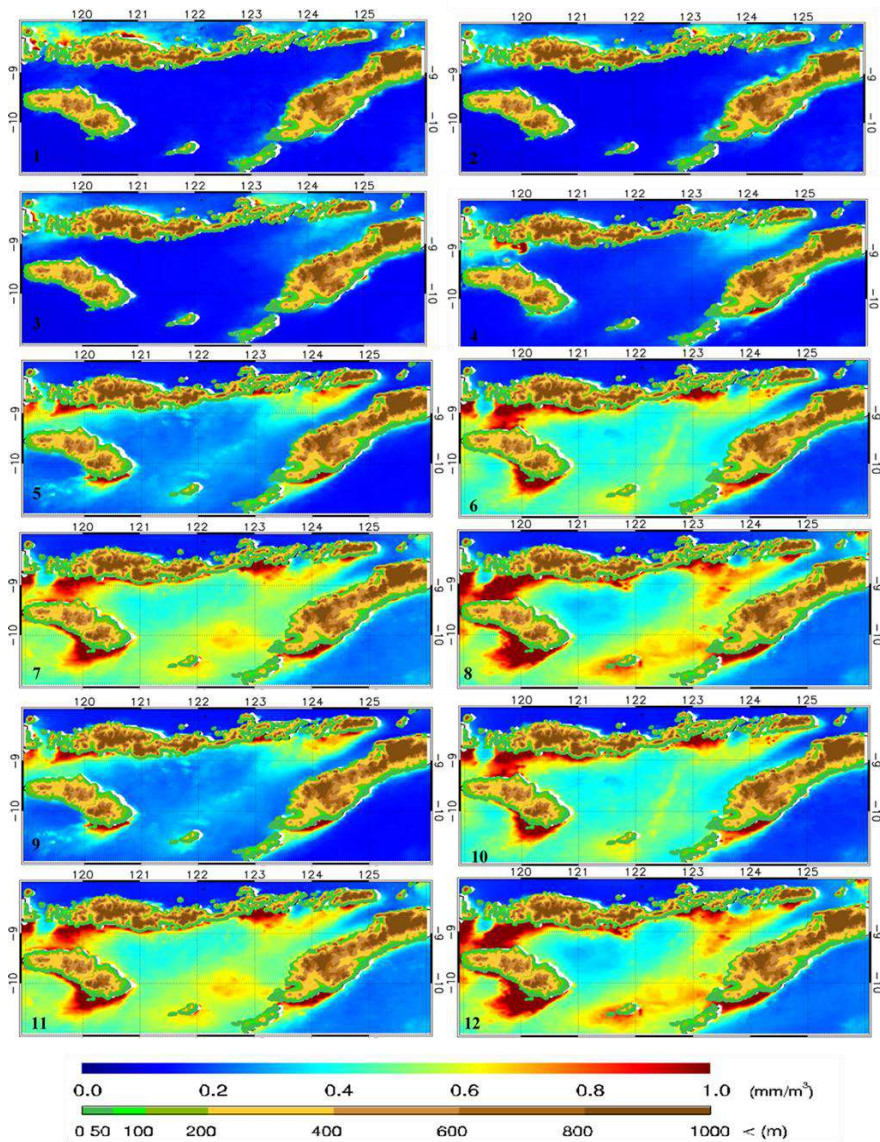


Figure 5. Monthly average of MODIS Satellite data on chlorophyll-a concentration, between January to December 2018, at Savu Sea.

In comparison, the chlorophyll-a concentration during the event was higher than during the west-monsoon in January 2018 (before the cetacean presence in November 2018), which was found to be in the range of $0.34\text{--}0.65 \text{ mg m}^{-3}$, as well as during the west monsoon of January 2019, after the peak season, which was in the range of $0.05\text{--}1.24 \text{ mg m}^{-3}$, as can be seen in Figure 6A and Figure 6B.

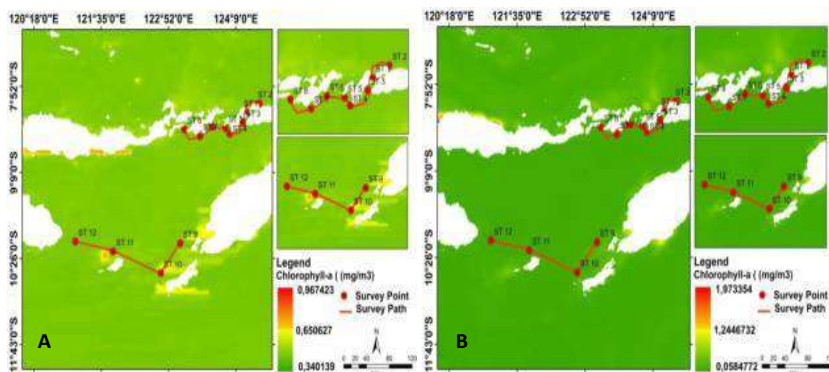


Figure 6. Spatial distribution of chlorophyll-a concentration in January 2018 (A) and January 2019 (B) in the Savu Sea.

Both before and after the peak of the cetacean period, the seawater chlorophyll-a was spread evenly inside and outside of the Savu Sea. The results of SST and Chlorophyll-a data extraction from the Aqua MODIS satellite in the waters of the Savu Sea in 2018, in order to compare the SST and Chlorophyll-a distribution data for the emergence of cetaceans, can be seen in Figure 7A and Figure 7B.

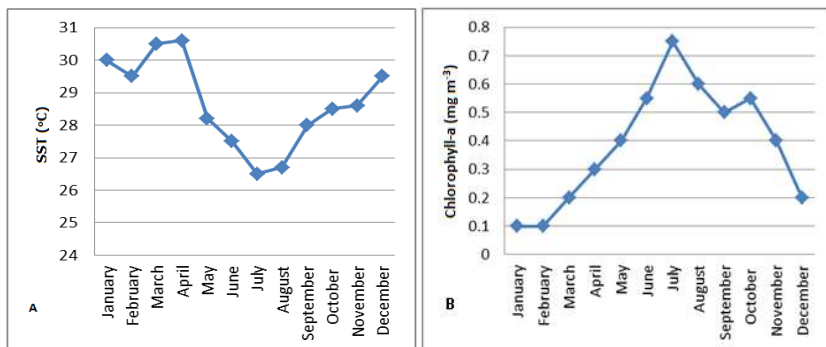


Figure 7. Variation in average SST (A) and Variation in average chlorophyll-a (B) January - December 2018 of MODIS satellite data.

Commented [WU6]: °C and mg m⁻³, on the y-axis, in A and B, respectively.

Commented [EN7R6]: Corrected thank you

Judging from Figures 7A and 7B it can be said that the decrease in SST in April-July is in the range of 28 to 26°C with the chlorophyll-a range increasing from February to July in the range of 0.1 to 0.8 mg m⁻³. The presence of cetaceans in Savu waters in November 2018 is in accordance with monthly SST and chlorophyll-a variations (in data from the MODIS satellite), showing an average SST of 28.5°C and an average chlorophyll-a of 0.4 mg m⁻³.

Field cetacean sightings in the Savu seawater. Field observations in the Savu Sea during November 2018 reported six species of cetaceans, four species of dolphins and two species of whales. Cetacean species and their percentage of appearance time in water bodies of each species are presented in Figure 8.

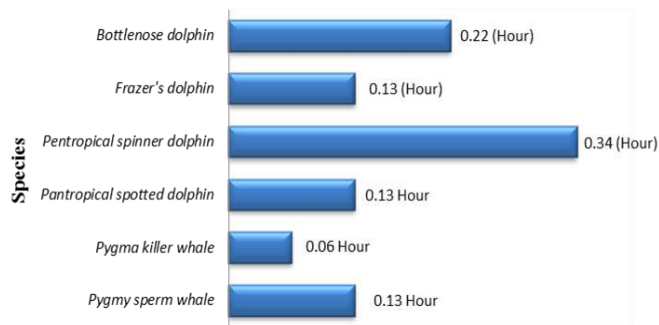


Figure 8. Types of cetaceans and time of appearance of cetaceans in the Savu Sea.

Looking at the graph in Figure 8, it can be seen that 4 species of cetaceans were found: the Pantropical spinning dolphin (*Stenella longirostris*) was recorded at the survey points (ST) 1, 2, 3, 4, 6, 10, and 11, showing arcs, the bow and the antenna goes around behaviors. Pantropical dolphins (*Stenella attenuata*) were recorded at the survey points (ST) 1, 2, 3, and 5 showing air avoidance and aerial behaviors. The whales recorded were dwarf killer whales (*Feresa attenuate*) and dwarf sperm whales (*Kogia breviceps*) at the survey points (ST) 1, 2, 3, and 4 which exhibited avoidance and logging behavior, with an average appearance time in water bodies ranging from 0.6 to 0.34 hours. The emergence of cetaceans in the Savu Sea waters can be seen in Figure 9.



Figure 10. Dolphin (A and B) and whale (C and D) in the Savu sea during field observations.

Discussion. The current study revealed that the cetacean sightings were in accordance with the field SST spatial distribution data in the range of 26.5 to 30.5°C during November 2018. The study assumed that the typical cool-pooled SST pattern recorded during November 2018 would much different to the SST pattern during January 2018 and January 2019 with a homogenous evenly dispersed SST pattern in Savu Sea and adjacent seawaters. This study assumes the cold pond SST pattern recorded during November

Commented [WU8]: Original photos?

Commented [EN9R8]: Yes, it taken by my self

Commented [WU10]: reformulate to make the phrase intelligible

2018 (figures 3 a,b) will be much different from the SST pattern in December 2018 (figure 4), with a higher SST pattern in the Savu Sea and the surrounding seawaters. Research by Sutton et al 2019); National Marine Park East Nusa Tenggara (2018); and Kahn (2017), reported that the range of in-situ SST for cetaceans was between 25 to 33°C. This SST range was regarded also as the optimum temperature for plankton breeding, increasing the plankton density and biodiversity, and ecological functions as migratory attractor to the area for feeding and reproduction of small fishes, cephalopods and ultimately for cetaceans, as the top predator in the food chain. Similar research by Frantzis et al (2011), showed that whales and dolphins were migrating towards plankton and prey rich seawater.

The high level of primary productivity in Savu Sea has caused unique oceanographical phenomena based on the combination of the SST (Figure 3A, 3B, 4 and 7A) and chlorophyll-a in the seawater mass (Figure 5, 6A, 6B and 7B). It is assumed that the vertical current movement from the south Indian Ocean entered through the strait between Sawu and the Rote Islands and resulted in an upwelling through the main Lamalera, Alor and Wetar straits. Further northward seawater mass from Indian ocean caused a horizontal mixing process with the Pacific Ocean water mass at Banda sea and resulted in a nutrient rich seawater mass. The high nutrients and primary productivity in the Savu Sea by means of phytoplankton biomass was also confirmed by the MODIS satellite chlorophyll-a data as in Figure 5. Previous research indicates that the Savu Sea has a high level of primary productivity as a result of the vertical mixing of cool Indian Ocean waters under currents that move upward into the Savu Sea, bringing high quantities of nutrients from the deeper water column.

The mixing of the cold Indian ocean with the warm Pacific Ocean water increases the nutrient concentration and primary production in the Savu Sea (Sutton et al 2019; Li & Yu 2020). These favorable ecological conditions have attracted some pelagic fish and other migratory species for feeding, their migratory pattern (Hartoko & Helmi 2004; Chung & Gong 2019; Lyu et al 2016). Chlorophyll-a concentration data from the MODIS satellite indicated value in the range of 0.06 to 0.87 mg m⁻³, during the cetacean sightings in Savu Sea, in November 2018, which was also confirmed by the research of Putra et al (2016). Huo et al (2020) stated that the optimal chlorophyll-a concentrations are in the range of 0.02-0.7 mg m⁻³, indicating a fertile or rich of nutrient seawater.

The high primary productivity in seawater will increase the biomass of small fish species and squid (cephalopods), regarded as the main prey and ultimately attracts species of marine mammals such as whales and dolphins, which migrate for feeding (Simond et al 2019). The current study revealed that the range of chlorophyll-a concentration inside the Savu Sea 0.6-0.8 mg m⁻³ was found to be tenfold higher than in the surrounding areas, in the Indian Ocean, with only 0.06 mg m⁻³. The two species of whales and four species of dolphins observed in the current study were assumed to be suitable with this favorable current mixing areas (FCMA) in the Savu Sea, with a high primary productivity and an optimum sea surface temperatures (Hartoko 2009; Hartoko 2010; Sutton et al 2019). The presence of cetaceans with behavior of bow riding traveling, bow riding, feeding riding and aerials in the FCMA in the Savu Sea was related to the migratory behavior and instinct for feeding (Diogou et al 2019; Rudolph et al 1997; Kahn 2017).

The two whale species and four dolphin species observed in this study correspond to a favorable current mixing area with high primary productivity and optimal sea surface temperature (Sutton et al 2019). Sightings of the bottlenose dolphin (*Tursiops truncatus*) were found at stations 2, 4 and 7, with bow-riding behavior. Fraser's dolphin (*Lagenodelphis hosei*) was found at stations 1, 2, 4, 5, 12, with the bow and aerial behavior. The pantropical spinning dolphin (*Stenella longirostris*) was found at stations 1, 2, 3, 4, 6, 10, 11, with bow, traveling, bow riding and aerial behavior. The pantropical leopard dolphin (*Stenella attenuata*) was found at stations 1, 2, 3, 5 with aerial and air Avoidance behavior. Based on field observation data, dolphins were found in the sea surface temperature range of 26.4 to 30.5°C and chlorophyll-a ranged from 0.3 to 0.6 mg m⁻³. The dwarf killer whale (*Feresa attenuate*) and the dwarf sperm whale (*Kogia breviceps*) were found at stations 1, 2, 3, 4, with avoidance and logging behavior,

corresponding to a sea surface temperature range between 26.4 to 28.7°C and chlorophyll 0.2 to 0.8 mg m⁻³. The average appearance of cetaceans in the Savu Sea waters ranges from 0.6 to 0.34 hours. Cetacean observing behavior was of types: traveling by, bow, eating, and space. Cetaceans appearing at the marine waters surface with an average time span of 0.5-0.55 hours show migratory feeding and reproducing behavior (Rudolph et al., 1997); (Diogou et al., 2019).

Conclusions. The cool seawater phenomena in November 2018 in the Savu Sea, corresponding to field SST spatial distribution ranging from 26.4 to 30.5°C, was regarded as the oceanographic variable the most influencing on the presence, sightings and migrating paths of the cetacean at the Savu Sea. The satellite chlorophyll-a concentration in the Savu Sea, in November 2018, ranged from 0.06 to 0.87 mg m⁻³. Four species of dolphins were observed: the bottlenose dolphins (*Tursiops truncatus*), the Fraser's dolphins (*Lagenodelphis hosei*), the pygmy spinning dolphins (*Stenella longirostris*) and the pantropical spotted dolphins (*Stenella attenuata*), and two species of whales: the pygmy killer whales (*Feresa attenuata*) and the pygmy sperm whale (*Kogia breviceps*).

Acknowledgements. The authors would like to thank the Local Government of East Nusa Tenggara Province and the Office of World Wildlife Fund for Nature (WWF) at Solor-Alor. Sincere thanks to the LPDP Indonesian Government for the scholarship concerning the Doctoral Program of Coastal Management, at the Faculty of Fisheries and Marine Sciences and to the Institute of Research and Community Services, at the Diponegoro University, Semarang, Indonesia, for their funding support under the contract no. 233-39/UN7.6.1/PP/2020. Special thanks to the National Aeronautics and Space Administration (NASA) for the use of MODIS AquaTerra satellite data and the SeaDas software application, and to ESRI for the use of ArcGis 10.3 software to process the satellite data and to all other parties for their help and contributions.

Conflict of interest. The authors declare no conflict of interest.

References

- Citta J. J., Okkonen S. R., Quakenbush L. T., Maslowski W., Osinski R., George J. C., Small R. J., Brower H., Heide M. P., Harwood L.A., 2018 Oceanographic Characteristics Associated with Autumn Movements of Bowhead Whales in the Chukchi Sea. *Deep-Sea Research Part II*. (152) 121 – 131.
- Chung C. C., Gong G. C., 2019 Attribution of the growth of a distinct population of *Synechococcus* to the coverage of lateral water on an upwelling, *Terrestrial, Atmospheric and Oceanic Sciences*. doi: 10.3319/TAO.2018.09.26.01.
- Diogou N., Palacios D. M., Nieuwkerk S. L., Nystuen J. A., Papathanassiou E., Katsanevakis S., Klinck H., 2019 Sperm Whale (*Physeter macrocephalus*) Acoustic Ecology at Ocean Station PAPA in the Gulf of Alaska – Part 1: Detectability and Seasonality. *Deep-Sea Research Part I*. (150) 103 – 147
- Dréo, Richard, Bouffaut L., Leroy E., Barruol G., Samaran F., 2019 Baleen Whale Distribution and Seasonal Occurrence Revealed by an Ocean Bottom Seismometer Network in the Western Indian Ocean. *Deep-Sea Research Part II: Topical Studies in Oceanography*. (16) 132 – 144.
- Frantzis A., Airoidi S., Notarbartolo-di-sciara G., Johnson C., Mazzariol S., 2011 Inter-Basin Movements of Mediterranean Sperm Whales Provide Insight into Their Population Structure and Conservation. *Deep-Sea Research Part I*. 58(4) 454 – 459.
- Forney K. A., Barlow J., 1998 Seasonal Patterns in the Abundance and Distribution of California Cetaceans, 1991-1992. *Marine Mammal Science*. 14(3) 460 – 489.
- González C., Victoria, Piola A., O'Brien T. D., Tormosov D. D., Acha E. M., 2019 Circumpolar Frontal Systems as Potential Feeding Grounds of Southern Right Whales. *Progress in Oceanography*. (176) 102-123.

Commented [WU11]: The references formatting does not respect the AACL Bioflux Journal's requirements. Please see the instructions for authors and the model from our website and make the necessary adjustments. Thank you!

Commented [EN12R11]: I have Edited. Thank you

- Guinet C., Taupier-letage I., Mate B., Petiau E., 2009 Scale-Dependent Habitat Use by a Large Free-Ranging Predator, the Mediterranean Fin Whale. *Deep-Sea Research I.* (56) 801 – 811.
- Hartoko A., 2013 Oceanographic Characters and Plankton Resources of Indonesia. Graha Ilmu. ISBN : 978-979-756-957-0. [in Indonesian]
- Hartoko A., Helmi M., 2004 Development of Digital Multilayer Ecological Model for Padang Coastal Water West Sumatra. *Journal of Coastal Management.* 7(3) 129 – 136.
- Hartoko A., 2009 Ocean Observation on SST Variability and Sub-Surface Sea Water Temperature off The North Papua the Fate of El_Nino 1997 & 2007 and La Nina 2002 : Field Measurement and TRITON Buoy Data. *Journal of Coastal Development.* ISSN.1410-5217. 13(1) 1 – 10.
- Hartoko A., 2010 Spatial Distribution of Thunnus.sp, Vertical and Horizontal Sub-surface Multilayer Temperature Profiles of in-situ ARGO Float Data in Indian Ocean. *Journal of Coastal Development.* ISSN.1410-5217. 14(1) 1 – 14.
- Hartoko A., Febrianto A., Pamungkas A., Fachruddin I., Helmi M., Hariadi, 2019 The Myth and Legend of Sadai and Gaspar Strait Bangka Belitung (Banca-Billiton) and Oceanographic Conditions. *International Journal of GEOMATE.* 17(62) 212 –218.
- Huo Y., Liu Q., Zhang F., Li C., Tao Z., Bi H., Fan C., Zhang J., Sun S., 2020 'Biomass and estimated production, and feeding pressure on zooplankton of chaetognaths in the Yellow Sea, China', *Terrestrial, Atmospheric and Oceanic Sciences.* 61-75.
- Kahn B., 2017 Blue Whales of the Savu Sea, Indonesia. Indonesia. Paper presented at the 17th Biannual Marine Mammal Conference - Blue Whale Workshop. Cape Town, South Africa. 28 Nov – 3 Dec 2017.
- Kahn B., 2016 Oceanic Cetaceans & Associated Habitats Solomon Islands Marine Assessment. Published : The Nature Conservancy, Indo-Pacific Resource Centre. 5 – 15.
- Li Y. X., Yu J. Y., 2020 'Why rare tropical cyclone formation after maturity of super El Niño events in the western North Pacific?', *Terrestrial, Atmospheric and Oceanic Sciences.*
- Lyu C. G., Tian J., Yang W. B., Tian Q. J., Lin Y. H., Liu Z. M., Zhang H. M., 2016 'Diurnal variation of solar-blind ultraviolet upwelling radiance led by observation geometry factors on geostationary attitude sensor limb viewing', *Terrestrial, Atmospheric and Oceanic Sciences.* 943-953.
- Mujiyanto, Riswanto, Nastiti A. S., 2017 Effectiveness of Sub Zone Cetacean Protection In Marine Protected Areas Savu. National, Sea, Marine Park, East Nusa Tenggara, Areas Savu, S.E.A. National, Marine Park, and East Nusa Tenggara. *Journal of Coastal and Ocean.* 1(2) 1 - 12.
- NASA. National Aeronautics and Space Administration, 2019 www.nasa.gov
- National Marine Park East Nusa Tenggara. Areas Savu Sea, 2018 Effectiveness of Sub Zone Cetacean Protection In Marine Protected Areas of Savu Sea. Research Report.
- Packard T., Osma N., Fernández-Urruzola I., Codispoti L. A., Christensen J. P., Gómez M. 2015 Peruvian upwelling plankton respiration: calculations of carbon flux, nutrient retention efficiency, and heterotrophic energy production. *Biogeosciences.* (12) 2641 – 2654.
- Perrin W. F., Mallette S. D., Brownell R. L., 2018 Minke Whales. *Encyclopedia of Marine Mammals.* (Third edition) : Balaenoptera acutorostrata and B. bonaerensis. pp : 608 –613. <https://doi.org/10.1016/B978-0-12-804327-1.00175-8>.
- Priyadarshana T., Randage S. M., Alling A., Calderan S., Gordon J., Leaper R., Porter L., 2016 Distribution Patterns of Blue Whale (*Balaenoptera musculus*) and Shipping off Southern Sri Lanka. *Regional Studies in Marine Science.* (3) 181 – 188.
- Putra M. I. H., Lewis S. A., Kurniasih E. M., Prabuning D., Faiqoh E., 2016 Plankton Biomass Models Based on GIS and Remote Sensing Technique for Predicting Marine Megafauna Hotspots in the Solor Waters. *IOP Conference Series: Earth and Environmental Science.* 47(1) 12 - 15.
- Reisinger R. R., Keith M., Andrews R. D., de Bruyn P. J. N., 2015 Movement and Diving of Killer Whales (*Orcinus orca*) at a Southern Ocean Archipelago. *Journal of Experimental Marine Biology and Ecology.* (473) 190 - 102.

- Rosas C. L., Gil M. N., Uhart M. M., 2012 Trace metal concentrations in Southern Right Whale (*Eubalaena australis*) at Península Valdés, Argentina. *Marine Pollution Bulletin*, 64(6)1255 – 1260.
- Rudolph P., Smeenk C., Leatherwood S.. 1997 Preliminary Checklist of Cetacea in the Indonesian Archipelago and Adjacent Waters. *Jurnal of Zoologische Verhandelingen Leiden*. (312) 1 - 48.
- Salim D., 2011 Conservation of Marine Mammals (Cetacea) at Savu Sea. *East Nusa Tenggara. Marine Journal*. 4(1) 24 – 41.
- Sediadi A., 2004 Effect of Upwelling to the Abundance and Phytoplankton Distribution at Banda Sea. *Makara, Sains*. 8(2) 43 - 51.
- Simond A. E., Houde M., Lesage V., Michaud R., Zbinden D., Verreault J., 2019 Associations between Organohalogen Exposure and Thyroid- and Steroid-Related Gene Responses in St. Lawrence Estuary Belugas and Minke Whales. *Marine Pollution Bulletin*.(145) 174 – 184.
- Stepanuk J. E. F., Read A. J., Baird R. W., Webster D. L., Thorne L. H., 2018 Spatiotemporal Patterns of Overlap between Short-Finned Pilot Whales and the U.S. Pelagic Longline Fishery in the Mid-Atlantic Bight : An Assessment to Inform the Management of Fisheries Bycatch. *Fisheries Research* .(208) 309 – 320.
- Sutton A. L., Curt K. S., Jenner K. C. S., Jenner M. M., 2019 Deep-Sea Research Part II Habitat Associations of Cetaceans and Seabirds in the Tropical Eastern Indian Ocean. *Deep-Sea Research Part II* (166) 171 – 186.

Received: 03 March 2021. Accepted: 2021. Published online: 2021.

Authors:

Jahved Ferianto Maro, Diponegoro University, Fisheries and Marine Science Faculty, Coastal Resources Management Doctoral Program, Prof. Sudarto Street, Semarang, 50275 Central Java, Indonesia, e-mail: yantogiuntrib@gmail.com

Agus Hartoko, Diponegoro University, Fisheries and Marine Science Faculty, Coastal Resources Management Doctoral Program, Prof. Sudarto Street, Semarang, 50275 Central Java, Indonesia, e-mail: agushartoko.undip@gmail.com

Sutrisno Anggoro, Diponegoro University, Fisheries and Marine Science Faculty, Coastal Resources Management Doctoral Program, Prof. Sudarto Street, Semarang, 50275 Central Java, Indonesia, e-mail: sutrisnoanggoro52@gmail.com

Max Rudolf Muskananfolo, Diponegoro University, Fisheries and Marine Science Faculty, Coastal Resources Management Doctoral Program, Prof. Sudarto Street, Semarang, 50275 Central Java, Indonesia, e-mail: maxmuskananfolo@yahoo.com

Erick Nugraha, Jakarta Technical University of Fisheries, Faculty of Fishing Technology, 12520 South Jakarta, Indonesia, e-mail: nugraha_eriq1@yahoo.co.id

This is an open-access article distributed under the terms of the Creative Commons Attribution License, which permits unrestricted use, distribution and reproduction in any medium, provided the original author and source are credited.

How to cite this article:

Maro J. F., Hartoko A., Anggoro S., Muskananfolo M. R., Nugraha E., 2021 Sea surface temperature and chlorophyll-a concentrations from MODIS satellite data and presence of cetaceans in Savu, Indonesia. *AAFL Bioflux* 14(x):.

E • Eni Kovacs ...concentrations from MODIS satellite data and presence... 🔗 Sel, 4 Mei 2021 jam 02.50 ☆



EN • erick nugraha <nugraha_eriq1@yahoo.co.id> 🖨️ 🔗 Sel, 4 Mei 2021 jam 09.57 ☆
Kepada: Eni Kovacs

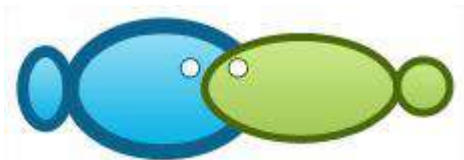
Dear Dr Eni,
Some correction on references has been edited.
and i send you statement letter from author.
many thanks for your kind cooperation.

best regards,

Erick Nugraha

> Tampilkan pesan asli
[Unduh semua lampiran sebagai file zip](#)

- | | |
|---|---|
|  |  |
| E Nugraha_... .doc
9MB | Surat perny... .pdf
295.6kB |



Sea surface temperature and chlorophyll-a concentrations from MODIS satellite data and presence of cetaceans in Savu, Indonesia

¹Jahved F. Maro, ¹Agus Hartoko, ¹Sutrisno Anggoro, ¹Max R. Muskananfolo, ²Erick Nugraha

¹ Faculty Fisheries and Marine Science, Coastal Resources Management Doctoral Programe, Diponegoro University, Semarang, Indonesia; ² Faculty of Fishing Technology, Jakarta Technical University of Fisheries, South Jakarta, Indonesia. Corresponding author: E. Nugraha, nugraha_eriq1@yahoo.co.id

Abstract. This study demonstrated that the presence of cetacean in the Savu seas was in accordance with the patterns of sea surface temperature (SST) and chlorophyll-a concentrations, as indicators of a favourable seawater temperature and of the presence of its natural diet. The aim of this study was to analyze the monthly average sea surface temperature (SST) and chlorophyll-a from January to December 2018, based on the MODIS Aqua satellite data and on the field validation for May 2018, and on the cetacean sighting surveys in Savu seawater. Results of field SST data measurement ranged from 26.4 to 30.5°C. The SST satellite data ranged from 26.7 to 31.4°C and chlorophyll-a concentration ranged from 0.5-0.83 mg m⁻³. Field cetacean observations had identified four dolphins and two whales species, namely the bottlenose dolphin (*Tursiops truncatus*), Fraser's dolphin (*Lagenodelphis hosei*), pantropical spinner dolphin (*Stenella longirostris*) and pantropical spotted dolphin (*Stenella attenuata*). The two species of whales found were the pygmy feresa whale (*Feresa attenuata*) and pygmy sperm whale (*Kogia breviceps*) from 12 field survey points.

Key Words: oceanographic variables, cetaceans, remote sensing.

Introduction. Indonesian seawaters are inhabited by 31 species of cetaceans and the dugong (Rosas et al 2012). These marine mammals are spread from the coast to the deep sea of Indonesia, showing both resident and migratory behavior (Salim 2011). Several species of cetaceans with migratory behavior occupy the eastern part of Indonesia seawaters and their migratory pathways extend from the Indian to Pacific Ocean through the straits of Komodo Island, Solor, Lembata, Alor, Wetar, Banda Sea, southeast Sulawesi, east Sulawesi and Sorong (Papua island), at the north (Salim 2011). The eastern part of Indonesia seawaters, especially in some inter islands, have functioned as the entry point strait for cetaceans as well as for some species of sea turtles. At present, most of the world's attention is given to the issue of protection, presence observation, migratory and distribution patterns of marine mammals, especially for cetaceans (Dréo et al 2019). The issues mainly in regard the declining population of cetaceans caused by human activities, such as illegal fishing, pollution, and environmental degradation (González et al 2019; Sutton et al 2019). In depth and holistic research on cetacean ecology and migratory pathways in Indonesia is very limited, although they constitute the basis for their conservation.

Savu Sea belongs to the province of East Nusa Tenggara (ENT), with extension areas up to Indonesia's Exclusive Economic Zone (EEZ), next to the west coast borders of Timor Leste National Marine Park of East Nusa Tenggara (Putra et al 2016). Savu Sea has unique seawater conditions with a significant increase in the sea surface temperature (SST) during the southeast monsoon and low SST during the east monsoon. The dynamics of seawater mass displacement occur in the surface layer due to a vertical dynamic pattern of seawater temperature resulting in an upwelling process, as well as in a horizontal mixing process due to the monsoonal wind pattern in Savu Sea. The impact

of the vertical seawater upwelling process triggers the seawater nutrient enrichment and phytoplankton biomass at the upper layer on shallow straits and along the coastal area (Sediadi 2004; Packard et al 2015).

The SST has a significant impact on the upwelling and on the natural abundance of plankton biomass, copepods and small crustaceans (Mujiyanto et al 2017), attracting groups of cetaceans which migrate into the Savu Sea through the Lembata, Alor and Wetar straits (Hartoko 2013). The study of Priyadarshana et al (2016) using MODIS Aqua satellite imagery and field surveys in the Gulf of Sri Lanka had found that the cetacean distribution and migratory pattern was explained mainly by the foraging habits. In the Indian Ocean studies have reported the presence of sperm whales in depths up to 20 m swimming toward the beach for feeding (Reisinger et al 2015; Citta et al 2018; Stepanuk et al 2018).

Holistic investigations on cetaceans were necessary to the marine authorities of East Nusa Tenggara Province for a sustainable management based on evidence data of oceanographic variables, such as: sea surface temperature, current pattern, upwelling, plankton abundance and data related to the cetaceans in the Savu Sea, resulting in an accurate, comprehensive and integrated scientific research report. Documented observations of cetacean behavior have reported blowing, logging, fluking, flipper-slapping, slap, spy-hopping, breaching and feeding (Kahn 2016).

Remote sensing technology is one method which has potential to be effective in conducting surveys over large areas and in narrow straits (Hartoko et al 2019). The satellite data used in this study was MODIS AquaTerra, for SST and chlorophyll-a in the Savu seawater. The aim of the study was to conduct spatial analysis and determine monthly ranges of SST and chlorophyll-a and their relationship to the presence of cetaceans in Savu seawater within East Nusa Tenggara Province, producing possible recommendations for a sustainable management by the local government.

Material and Method. Field cetacean boat track-line surveys were conducted over 10 days in November 2018 with 12 survey points along the Savu sea, East Nusa Tenggara Province, Indonesia as presented in Figure 1.

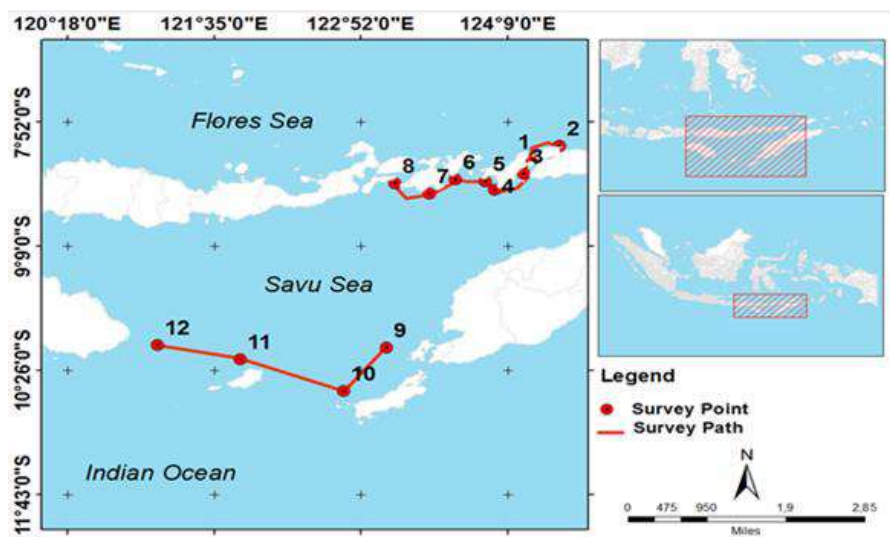


Figure 1. Station points of the field survey.

In this study we used several survey tools, including the Marine Conservation Agency survey boat for surveyor sightings, Global Positioning System (GPS) to mark survey points coordinates, Nikon D5500 Camera for cetacean sighting documentations, Drone for aerial survey boat and cetacean sighting documentations, Water Quality Checker to measure in-situ sea water temperature, Binoculars for cetacean sighting identification, Hydrophone, Cetacean Identification Book for cetacean species identification, ArcMap 10.3, SeaDas 7.3, and Er-Mapper software for satellite data processing. The MODIS

AquaTerra level-3 of ASCII data file was downloaded from NASA link <https://oceancolor.gsfc.nasa.gov> (2019) NASA for sea surface temperatures and chlorophyll-a data analysis.

Field survey method. Field observations were based on a methodology used also by Guinet et al 2009, Kahn 2016, Forney & Barlow 1998, Diogou et al 2019, Perrin et al 2018. The use of the zigzag method aims to obtain an estimate of cetacean density and avoid glare from the sun. The method of field observation of the observer group consisted of 4 observers who were placed on the front deck, on the left, center and right side of the boat. The design of the observation experiment can be seen in Figure 2. The required field data is recorded and recorded in the logbook and returned to the original track. Field data and information recorded are date and time of appearance of cetaceans, GPS position, angle of cetacean position to boat, relative distance of cetaceans from boats, cetacean swimming direction, species, number, sea surface temperature, chlorophyll-a and cetacean behavior.

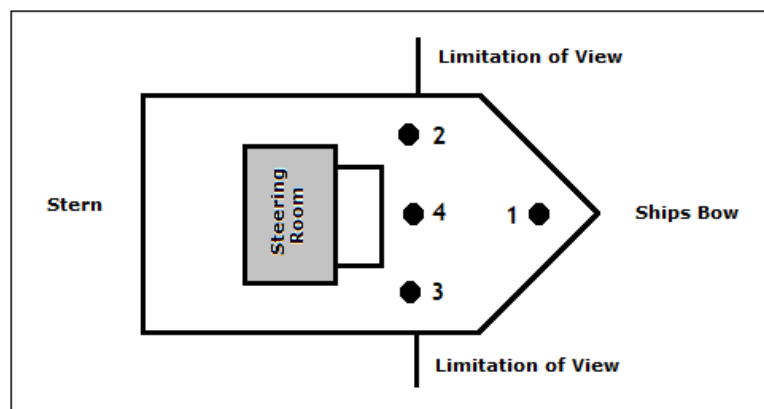


Figure 2. On board observer positions during survey.

Acquisition of satellite data. Acquisition of MODIS Aqua Terra satellite level 3 data used in the study were downloaded from National Aeronautics and Space Administration (NASA 2019) for the sea surface temperature (SST) and chlorophyll-a data. The study used original spectral of ASCII format level 3 data which was then processed using SeaDas 7.3 software and followed by a cropping at the level of the focused research area of Savu Sea.

Satellite data processing method and analysis. The first step of satellite raw data processing was involving data transform from the original satellite raw data in a numeric ASCII format consisting of coordinates and SST or chlorophyll-a data, then transformed into a spatial layer using an interpolation process based on a geo-statistic gridding method using ErMapper and ArcGis 10.3 software (Hartoko & Helmi 2004; Hartoko et al 2019; Dréo et al 2019).

Results

Distribution of sea surface temperature. Sea surface temperature was measured by using a water quality checker at 12 stations, in the range of 26.4–30.5°C (Figure 3A). Sea surface temperature based on MODIS AquaTerra satellite data was in the range of 26.7–31.4°C (Figure 3B), while analysis of MODIS AquaTerra satellite in November 2018 resulted in a SST range of 26.7–31.4°C. The position choice of stations 1 to 8 was intended to represent the Alor strait, stations 7 and 8 the Lembata–Lamalera strait and stations 9–12 the Sawu strait and Rote Islands, as the entrance gate of the Indian Ocean into the Savu Sea.

The east monsoon of November 2018 is regarded as the peak of the cetacean presence, in comparison with a lower MODIS satellite SST observed during the west monsoon of January 2018. More precisely, the recorded SST in the Savu Sea during the cetacean

presence event in November 2018 was 26.7–28.6°C, exhibiting a cooled-pool seawater mass, compared to the SST range of 28.6–31.4°C outside of the Savu Sea (Figure 3B).

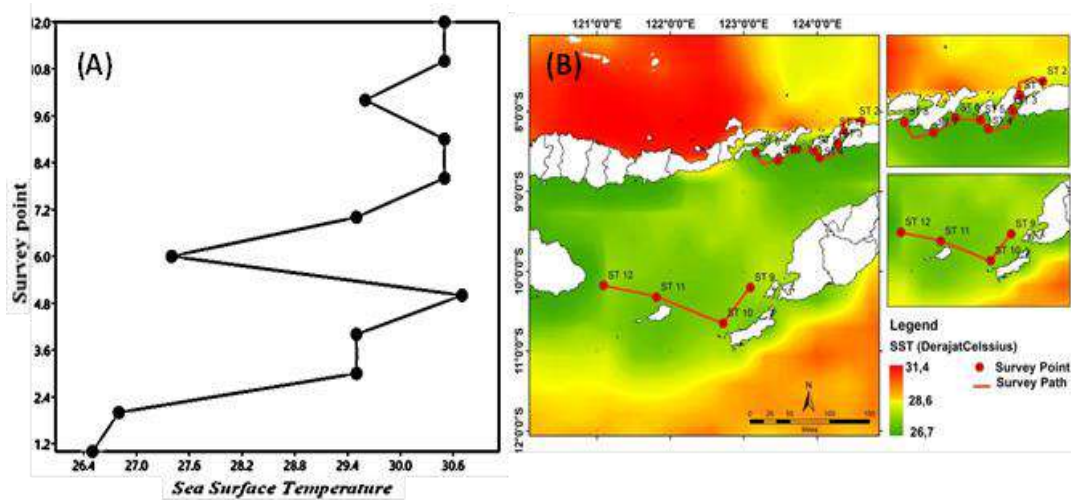


Figure 3. Distribution of SST from November 2018 field measurement (Figure 3A) and monthly distribution of SST data from the MODIS AquaTerra satellite (3B).

The results of the monthly SST analysis for 1 year using MODIS AquaTerra data found that the lowest SST detected was recorded in July, with a temperature range of 26–27°C (Figure 4).

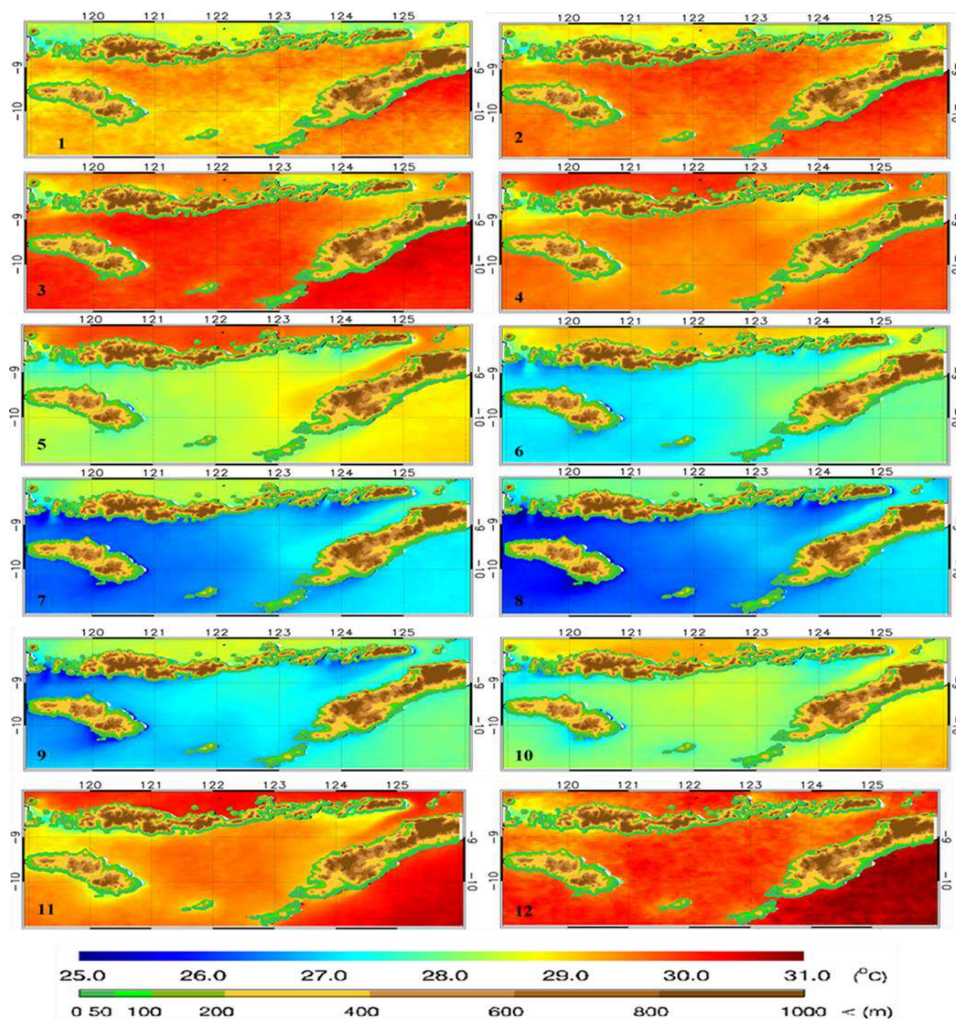


Figure 4. Monthly average of SST data from the MODIS satellite, in January–December 2018 in Savu Sea.

The range of SST recorded before the cetacean presence event in January 2018 was in the range of 27-32.5°C. The average SST range was higher in December and January 2018. Cetacean sightings in November 2018 were assessed due to the increasing number of seawater mixing processes in the Savu Sea due to the west monsoon winds. The impact is upwelling so that the Savu Sea has a warm and nutrient-rich SPL. Therefore, cetaceans come to the Savu Sea to find food.

Spatial distribution of chlorophyll-a. Monthly spatial analysis of chlorophyll-a concentrations using the Aqua Terra MODIS level 3 satellite data downloaded from the official NASA link <https://oceancolor.gsfc.nasa.gov>. Then the chlorophyll-a data were analyzed by the IDL application using the kriging analysis method, so it was found that the chlorophyll-a concentration in the Savu Sea was in the range of 0.5-0.83 mg m⁻³ when cetaceans appeared in November 2018 in the Savu Sea (Figure 5).

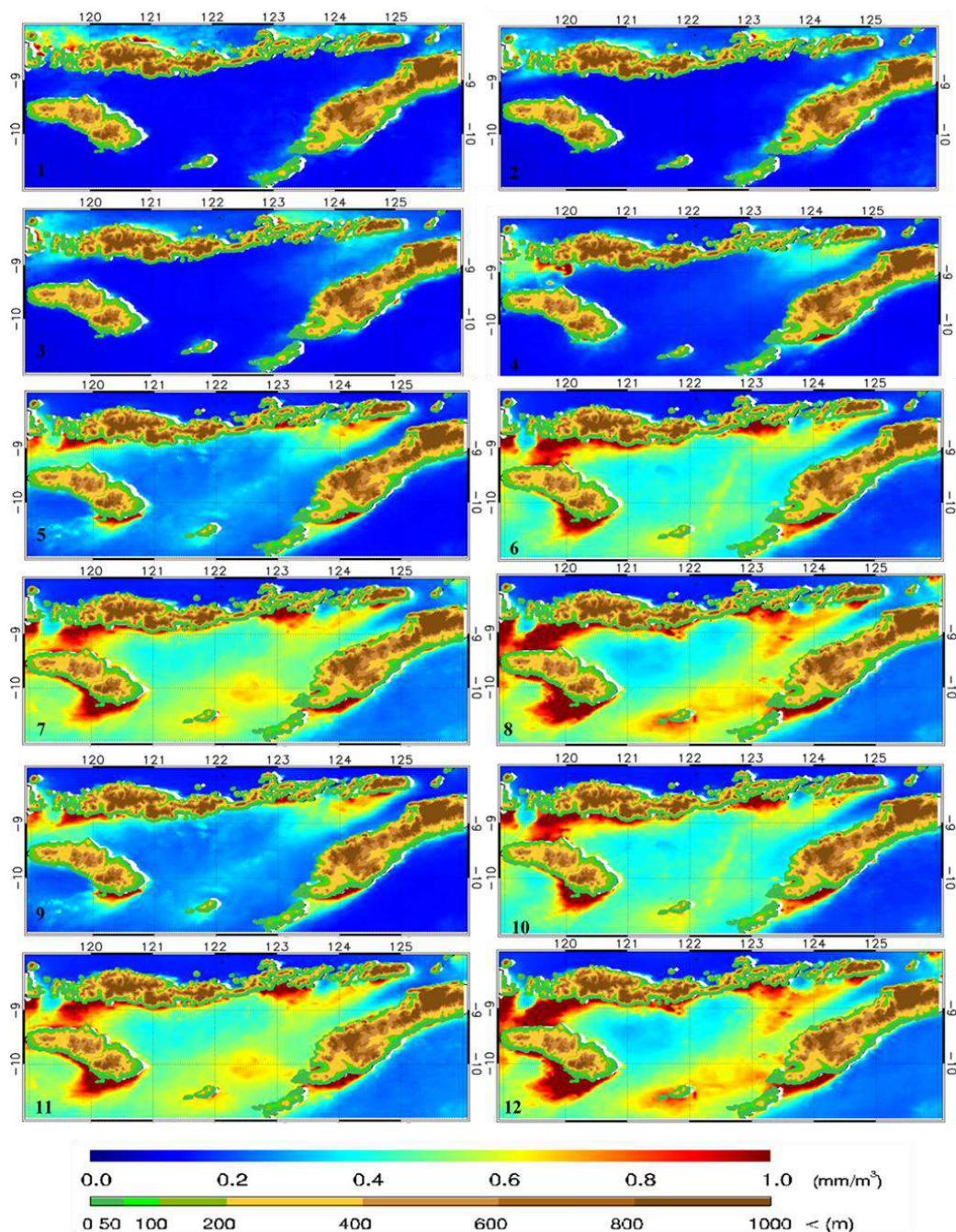


Figure 5. Monthly average of MODIS Satellite data on chlorophyll-a concentration, between January and December 2018, at Savu Sea.

In comparison, the chlorophyll-a concentration during the event was higher than during the west-monsoon in January 2018 (before the cetacean presence in November 2018), which was found to be in the range of 0.34–0.65 mg m⁻³, as well as during the west monsoon of January 2019, after the peak season, which was in the range of 0.05–1.24 mg m⁻³, as it can be seen in Figure 6A and Figure 6B.

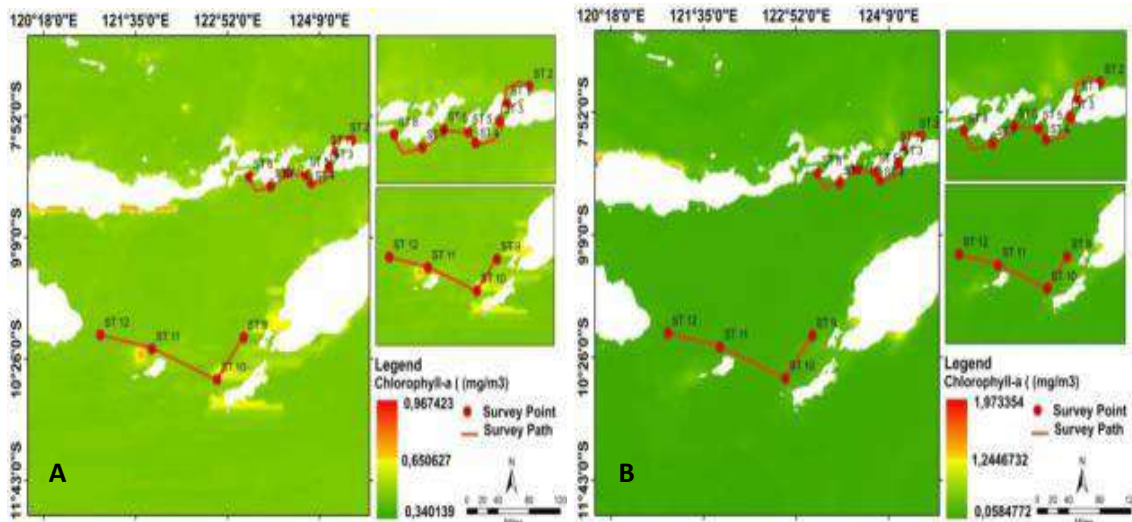


Figure 6. Spatial distribution of chlorophyll-a concentration in January 2018 (A) and January 2019 (B) in the Savu Sea.

Both before and after the peak of the cetacean period, the seawater chlorophyll-a was spread evenly inside and outside of the Savu Sea. The results of SST and chlorophyll-a data extraction from the Aqua MODIS satellite in the waters of the Savu Sea in 2018, in order to compare the SST and chlorophyll-a distribution data for the emergence of cetaceans, can be seen in Figure 7A and Figure 7B.

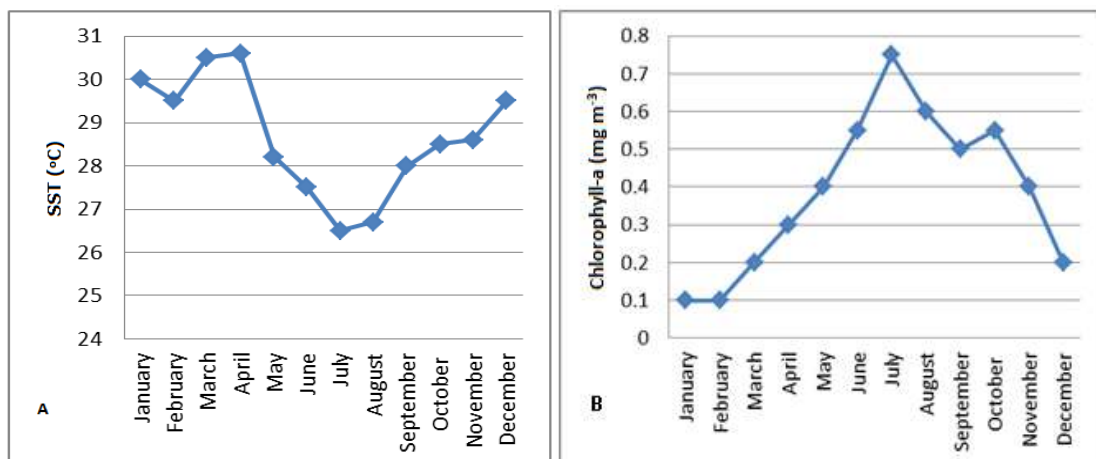


Figure 7. Variation in average SST (A); Variation in average chlorophyll-a (B) January–December 2018 of MODIS satellite data.

Judging from Figures 7A and 7B it can be said that the decrease in SST in April–July is in the range of 28–26°C with the chlorophyll-a range increasing from February to July in the range of 0.1–0.8 mg m⁻³. The presence of cetaceans in Savu waters in November 2018 is in accordance with monthly SST and chlorophyll-a variations (in data from the MODIS satellite), showing an average SST of 28.5°C and an average chlorophyll-a of 0.4 mg m⁻³.

Field cetacean sightings in the Savu seawater. Field observations in the Savu Sea during November 2018 reported six species of cetaceans, four species of dolphins and

two species of whales. Cetacean species and their percentage of appearance time in water bodies of each species are presented in Figure 8.

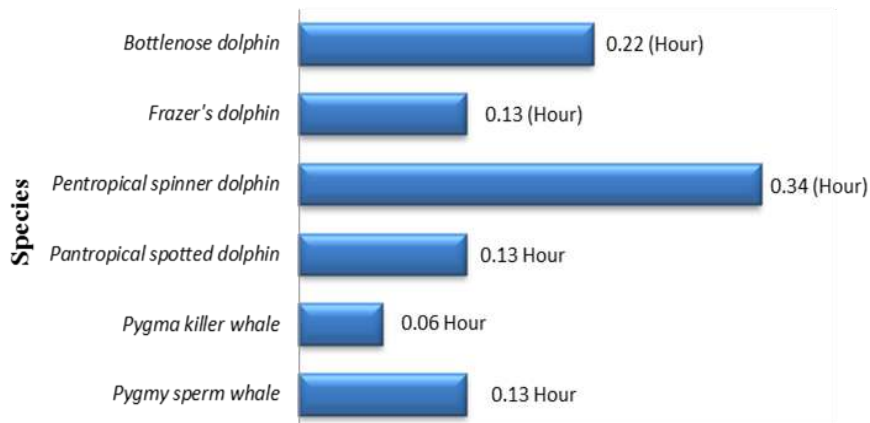


Figure 8. Types of cetaceans and time of appearance of cetaceans in the Savu Sea.

Looking at the graph in Figure 8, it can be seen that 4 species of cetaceans were found: the Pantropical spinning dolphin (*Stenella longirostris*) was recorded at the survey points (ST) 1, 2, 3, 4, 6, 10 and 11, showing arcs, the bow and the antenna goes around behaviors. Pantropical dolphins (*Stenella attenuata*) were recorded at the survey points (ST) 1, 2, 3, and 5 showing air avoidance and aerial behaviors. The whales recorded were dwarf killer whales (*Feresa attenuate*) and dwarf sperm whales (*Kogia breviceps*) at the survey points (ST) 1, 2, 3, and 4 which exhibited avoidance and logging behavior, with an average appearance time in water bodies ranging from 0.6 to 0.34 hours. The emergence of cetaceans in the Savu Sea waters can be seen in Figure 9.



Figure 10. Dolphin (A and B) and whale (C and D) in the Savu sea during field observations (original).

Discussion. The current study revealed that the cetacean sightings were in accordance with the field SST spatial distribution data in the range of 26.5-30.5°C during November 2018. This study assumes the cold pond SST pattern recorded during November 2018 (Figures 3A, 3B) will be much different from the SST pattern in December 2018 (Figure 4), with a higher SST pattern in the Savu Sea and the surrounding seawaters. Research

by Sutton et al (2019), National Marine Park East Nusa Tenggara (2018) and Kahn (2017) reported that the range of in-situ SST for cetaceans was between 25–33°C. This SST range was regarded also as the optimum temperature for plankton breeding, increasing the plankton density and biodiversity and ecological functions as migratory attractor to the area for feeding and reproduction of small fishes, cephalopods and ultimately for cetaceans, as the top predator in the food chain. Similar research by Frantzis et al (2011) showed that whales and dolphins were migrating towards plankton and prey rich seawater.

The high level of primary productivity in Savu Sea has caused unique oceanographical phenomena based on the combination of the SST (Figure 3A, 3B, 4 and 7A) and chlorophyll-a in the seawater mass (Figure 5, 6A, 6B and 7B). It is assumed that the vertical current movement from the south Indian Ocean entered through the strait between Sawu and the Rote Islands and resulted in an upwelling through the main Lamalera, Alor and Wetar straits. Further northward seawater mass from Indian Ocean caused a horizontal mixing process with the Pacific Ocean water mass at Banda Sea and resulted in a nutrient rich seawater mass. The high nutrients and primary productivity in the Savu Sea by means of phytoplankton biomass was also confirmed by the MODIS satellite chlorophyll-a data as in Figure 5. Previous research indicates that the Savu Sea has a high level of primary productivity as a result of the vertical mixing of cool Indian Ocean waters under currents that move upward into the Savu Sea, bringing high quantities of nutrients from the deeper water column.

The mixing of the cold Indian Ocean with the warm Pacific Ocean water increases the nutrient concentration and primary production in the Savu Sea (Suton et al 2019; Li & Yu 2020). These favorable ecological conditions have attracted some pelagic fish and other migratory species for feeding, inducing their migratory pattern (Hartoko & Helmi 2004; Chung & Gong 2019; Lyu et al 2016). Chlorophyll-a concentration data from the MODIS satellite indicated values in the range of 0.06-0.87 mg m⁻³, during the cetacean sightings in Savu Sea, in November 2018, which was also confirmed by the research of Putra et al (2016). Huo et al (2020) stated that the optimal chlorophyll-a concentrations are in the range of 0.02-0.7 mg m⁻³, indicating a fertile or rich of nutrient seawater.

The high primary productivity in seawater will increase the biomass of small fish species and squid (cephalopods), regarded as the main prey and ultimately attracts species of marine mammals such as whales and dolphins, which migrate for feeding (Simond et al 2019). The current study revealed that the range of chlorophyll-a concentration inside the Savu Sea 0.6-0.8 mgm⁻³ was found to be tenfold higher than in the surrounding areas, in the Indian Ocean, with only 0.06 mg m⁻³. The two species of whales and four species of dolphins observed in the current study were assumed to be suitable with this favorable current mixing areas (FCMA) in the Savu Sea, with a high primary productivity and an optimum sea surface temperatures (Hartoko 2009; Hartoko 2010; Sutton et al 2019). The presence of cetaceans with behavior of bow riding traveling, bow riding, feeding riding and aerials in the FCMA in the Savu Sea was related to the migratory behavior and instinct for feeding (Diogou et al 2019; Rudolph et al 1997; Kahn 2017).

The two whale species and four dolphin species observed in this study correspond to a favorable current mixing area with high primary productivity and optimal sea surface temperature (Sutton et al 2019). Sightings of the bottlenose dolphin (*Tursiops truncatus*) were found at stations 2, 4 and 7, with bow-riding behavior. Fraser's dolphin (*Lagenodelphis hosei*) was found at stations 1, 2, 4, 5, 12, with the bow and aerial behavior. The pantropical spinning dolphin (*Stenella longirostris*) was found at stations 1, 2, 3, 4, 6, 10, 11, with bow, traveling, bow riding and aerial behavior. The pantropical leopard dolphin (*Stenella attenuata*) was found at stations 1, 2, 3, 5 with aerial and air avoidance behavior. Based on field observation data, dolphins were found in the sea surface temperature range of 26.4-30.5°C and chlorophyll-a ranged from 0.3 to 0.6 mg m⁻³. The dwarf killer whale (*Feresa attenuate*) and the dwarf sperm whale (*Kogia breviceps*) were found at stations 1, 2, 3, 4, with avoidance and logging behavior, corresponding to a sea surface temperature range between 26.4-28.7°C and chlorophyll 0.2–0.8 mg m⁻³. The average appearance of cetaceans in the Savu Sea waters ranges from 0.6 to 0.34

hours. Cetacean observed behavior was of types: traveling by bow, bow, eating, and space. Cetaceans appearing at the marine waters' surface with an average time span of 0.5-0.55 hours show migratory feeding and reproducing behavior (Rudolph et al 1997; Diogou et al 2019).

Conclusions. The cool seawater phenomena in November 2018 in the Savu Sea, corresponding to field SST spatial distribution ranging from 26.4 to 30.5°C, was regarded as the oceanographic variable the most influencing on the presence, sightings and migrating paths of the cetacean at the Savu Sea. The satellite chlorophyll-a concentration in the Savu Sea, in November 2018, ranged from 0.06 to 0.87 mg m⁻³. Four species of dolphins were observed: the bottlenose dolphins (*T. truncatus*), the Fraser's dolphins (*L. hosei*), the pygmy spinning dolphins (*S. longirostris*) and the pantropical spotted dolphins (*S. attenuata*), and two species of whales: the pygmy killer whales (*F. attenuate*) and the pygmy sperm whale (*K. breviceps*).

Acknowledgements. The authors would like to thank the Local Government of East Nusa Tenggara Province and the Office of World Wildlife Fund for Nature (WWF) at Solor-Alor. Sincere thanks to the LPDP Indonesian Government for the scholarship concerning the Doctoral Program of Coastal Management, at the Faculty of Fisheries and Marine Sciences and to the Institute of Research and Community Services, at the Diponegoro University, Semarang, Indonesia, for their funding support under the contract no. 233-39/UN7.6.1/PP/2020. Special thanks to the National Aeronautics and Space Administration (NASA) for the use of MODIS AquaTerra satellite data and the SeaDas software application, and to ESRI for the use of ArcGis 10.3 software to process the satellite data and to all other parties for their help and contributions.

Conflict of interest. The authors declare no conflict of interest.

References

- Citta J. J., Okkonen S. R., Quakenbush L. T., Maslowski W., Osinski R., George J. C., Small R. J., Brower H., Heide M. P., Harwood L. A., 2018 Oceanographic characteristics associated with autumn movements of bowhead whales in the Chukchi Sea. *Deep-Sea Research Part II* (152):121-131.
- Chung C. C., Gong G. C., 2019 Attribution of the growth of a distinct population of *Synechococcus* to the coverage of lateral water on an upwelling. *Terrestrial, Atmospheric and Oceanic Sciences* 30(4):575-587.
- Diogou N., Palacios D. M., Nieukirk S. L., Nystuen J. A., Papathanassiou E., Katsanevakis S., Klinck H., 2019 Sperm whale (*Physeter macrocephalus*) acoustic ecology at ocean station PAPA in the Gulf of Alaska – Part 1: Detectability and Seasonality. *Deep-Sea Research Part I* (150):103-147.
- Dréo, Richard, Bouffaut L., Leroy E., Barruol G., Samaran F., 2019 Baleen whale distribution and seasonal occurrence revealed by an ocean bottom seismometer network in the Western Indian Ocean. *Deep-Sea Research Part II: Topical Studies in Oceanography* 16:132-144.
- Frantzis A., Airoidi S., Notarbartolo-di-sciara G., Johnson C., Mazzariol S., 2011 Inter-basin movements of mediterranean sperm whales provide insight into their population structure and conservation. *Deep-Sea Research Part I* 58(4):454-459.
- Forney K. A., Barlow J., 1998 Seasonal patterns in the abundance and distribution of California cetaceans, 1991-1992. *Marine Mammal Science* 14(3):460-489.
- González C., Victoria, Piola A., O'Brien T. D., Tormosov D. D., Acha E. M., 2019 Circumpolar frontal systems as potential feeding grounds of southern right whales. *Progress in Oceanography* 176:102-123.
- Guinet C., Taupier-Letage I., Mate B., Petiau E., 2009 Scale-dependent habitat use by a large free-ranging predator, the Mediterranean fin whale. *Deep-Sea Research I* 56:801-811.

- Hartoko A., 2013 [Oceanographic characters and plankton resources of Indonesia]. Graha Ilmu, [Jogjakarta](#). Pp. 166. [no-of-pages-missing](#) [In Indonesian].
- Hartoko A., Helmi M., 2004 Development of digital multilayer ecological model for Padang coastal waters West Sumatera. *Journal of Coastal Management* 7(3):129-136.
- Hartoko A., 2009 Ocean observation on SST variability and sub-surface sea water temperature off the North Papua the fate of El Nino 1997 & 2007 and La Nina 2002: Field measurement and TRITON Buoy data. *Journal of Coastal Development* 13(1):1-10.
- Hartoko A., 2010 Spatial distribution of *Thunnus* sp., vertical and horizontal sub-surface multilayer temperature profiles of in-situ ARGO float data in Indian Ocean. *Journal of Coastal Development* 14(1):1-14.
- Hartoko A., Febrianto A., Pamungkas A., Fachruddin I., Helmi M., Hariadi, 2019 The myth and legend of Sadai and Gaspar Strait Bangka Belitung (Banca-Billiton) and oceanographic conditions. *International Journal of GEOMATE* 17(62):212-218.
- Huo Y., Liu Q., Zhang F., Li C., Tao Z., Bi H., Fan C., Zhang J., Sun S., 2020 Biomass and estimated production, and feeding pressure on zooplankton of chaetognaths in the Yellow Sea, China. *Terrestrial, Atmospheric and Oceanic Sciences*, pp. 61-75.
- Kahn B., 2017 Blue whales of the Savu Sea, Indonesia. 17th Biannual Marine Mammal Conference - Blue Whale Workshop, Cape Town, South Africa. Pp. 1-3. [no-of-pages-missing](#).
- Kahn B., 2016 Oceanic cetaceans & associated habitats Solomon Islands Marine Assessment. The Nature Conservancy, Indo-Pacific Resource Centre, pp. 5-15.
- Li Y. X., Yu J. Y., 2020 Why rare tropical cyclone formation after maturity of super El Niño events in the western North Pacific? *Terrestrial, Atmospheric and Oceanic Sciences*, 31(1): 21-32. [no-of-pages-missing](#).
- Lyu C. G., Tian J., Yang W. B., Tian Q. J., Lin Y. H., Liu Z. M., Zhang H. M., 2016 Diurnal variation of solar-blind ultraviolet upwelling radiance led by observation geometry factors on geostationary attitude sensor limb viewing. *Terrestrial, Atmospheric and Oceanic Sciences*, pp. 943-953.
- Mujiyanto, Riswanto, Nastiti A. S., 2017 Effectiveness of sub zone cetacean protection in marine protected areas Savu. National, Sea, Marine Park, East Nusa Tenggara, Areas Savu, S.E.A. National, Marine Park, and East Nusa Tenggara. *Journal of Coastal and Ocean* 1(2):1-12.
- Packard T., Osma N., Fernández-Urruzola I., Codispoti L. A., Christensen J. P., Gómez M. 2015 Peruvian upwelling plankton respiration: calculations of carbon flux, nutrient retention efficiency, and heterotrophic energy production. *Biogeosciences* (12):2641-2654.
- Perrin W. F., Mallette S. D., Brownell R. L., 2018 Minke whales. *Balaenoptera acutorostrata* and *B. bonaerensis*. *Encyclopedia of Marine Mammals*, pp. 608-613.
- Priyadarshana T., Randage S. M., Alling A., Calderan S., Gordon J., Leaper R., Porter L., 2016 Distribution patterns of blue whale (*Balaenoptera musculus*) and shipping off southern Sri Lanka. *Regional Studies in Marine Science* 3:181-188.
- Putra M. I. H., Lewis S. A., Kurniasih E. M., Prabuning D., Faiqoh E., 2016 Plankton biomass models based on GIS and Remote sensing technique for predicting marine megafauna hotspots in the Solor Waters. *IOP Conference Series Earth and Environmental Science* 47(1):12-15.
- Reisinger R. R., Keith M., Andrews R. D., de Bruyn P. J. N., 2015 Movement and diving of killer whales (*Orcinus orca*) at a Southern Ocean Archipelago. *Journal of Experimental Marine Biology and Ecology* 473:190-120.
- Rosas C. L., Gil M. N., Uhart M. M., 2012 Trace metal concentrations in southern right whale (*Eubalaena australis*) at Península Valdés, Argentina. *Marine Pollution Bulletin* 64(6):1255-1260.
- Rudolph P., Smeenk C., Leatherwood S., 1997 Preliminary checklist of cetacea in the Indonesian archipelago and adjacent waters. *Jurnal of Zoologische Verhandelingen Leiden* 312:1-48.
- Salim D., 2011 Conservation of marine mammals (*Cetacea*) at Savu Sea. East Nusa Tenggara. *Marine Journal* 4(1):24-41.

- Sediadi A., 2004 Effect of upwelling to the abundance and phytoplankton distribution at Banda Sea. *Makara Sains* 8(2):43-51.
- Simond A. E., Houde M., Lesage V., Michaud R., Zbinden D., Verreault J., 2019 Associations between organohalogen exposure and thyroid- and steroid-related gene responses in St. Lawrence Estuary belugas and minke whales. *Marine Pollution Bulletin* 145:174-184.
- Stepanuk J. E. F., Read A. J., Baird R. W., Webster D. L., Thorne L. H., 2018 Spatiotemporal patterns of overlap between short-finned pilot whales and the U.S. pelagic longline fishery in the Mid-Atlantic Bight: An assessment to inform the management of fisheries bycatch. *Fisheries Research* 208:309-320.
- Sutton A. L., Curt K. S., Jenner K. C. S., Jenner M. M., 2019 Deep-sea research part II habitat associations of cetaceans and seabirds in the tropical eastern Indian Ocean. *Deep-Sea Research Part II* 166:171-186.
- *** NASA, 2019 <https://oceancolor.gsfc.nasa.gov>.
- *** National Marine Park East Nusa Tenggara, Areas Savu Sea, 2018 Effectiveness of sub zone cetacean protection in marine protected areas of Savu Sea. Research report.

Received: 03 March 2021. Accepted: 2021. Published online: 2021.

Authors:

Jahved Ferianto Maro, Diponegoro University, Fisheries and Marine Science Faculty, Coastal Resources Management Doctoral Program, Prof. Sudarto Street, Semarang, 50275 Central Java, Indonesia, e-mail: yantogiuntrib@gmail.com

Agus Hartoko, Diponegoro University, Fisheries and Marine Science Faculty, Coastal Resources Management Doctoral Program, Prof. Sudarto Street, Semarang, 50275 Central Java, Indonesia, e-mail: agushartoko.undip@gmail.com

Sutrisno Anggoro, Diponegoro University, Fisheries and Marine Science Faculty, Coastal Resources Management Doctoral Program, Prof. Sudarto Street, Semarang, 50275 Central Java, Indonesia, e-mail: sutrisnoanggoro52@gmail.com

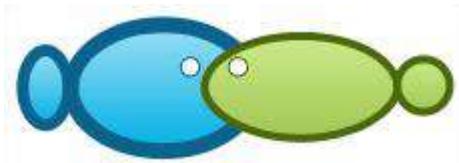
Max Rudolf Muskananfolo, Diponegoro University, Fisheries and Marine Science Faculty, Coastal Resources Management Doctoral Program, Prof. Sudarto Street, Semarang, 50275 Central Java, Indonesia, e-mail: maxmuskananfolo@yahoo.com

Erick Nugraha, Jakarta Technical University of Fisheries, Faculty of Fishing Technology, 12520 South Jakarta, Indonesia, e-mail: nugraha_eriq1@yahoo.co.id

This is an open-access article distributed under the terms of the Creative Commons Attribution License, which permits unrestricted use, distribution and reproduction in any medium, provided the original author and source are credited.

How to cite this article:

Maro J. F., Hartoko A., Anggoro S., Muskananfolo M. R., Nugraha E., 2021 Sea surface temperature and chlorophyll-a concentrations from MODIS satellite data and presence of cetaceans in Savu, Indonesia. *AAFL Bioflux* 14(x):.



STATEMENT LETTER

Hereby we declare our article with the title:

Sea surface temperature and chlorophyll-a concentrations from MODIS satellite data and presence of cetaceans in Savu, Indonesia

It has gone through several editing processes and we agreed to publish it.
Thank you.

Author :

Jahved F. Maro

Agus Hartoko

Sutrisno Anggoro

Max R. Muskananfolo

Erick Nugraha

Date, May 04, 2021