

Submission Journal : Analysis of Specific Shallow Water Current for Endemic Fish Conservation at Natuna Islands, Indonesia. Yahoo/Email M...

erick nugraha <nugraha_eriq1@yahoo.co.id> Kepada: Eni Kovacs Sei: 8 Jun 2021 jam 21:45

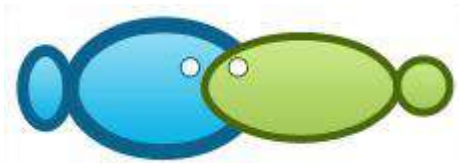
Dear Dr. Eni
I would like to submit our next Journal with the title : Analysis of Specific Shallow Water Current for Endemic Fish Conservation at Natuna Islands, Indonesia

Thank You.
Best regards.

Erick Nugraha
Unduh semua lampiran sebagai file zip

1_Haryadi_...docx 71kB
Submission 1_...pdf 351kB

https://www.googleadservices.com/pagead/ack?sa=L&ai=CDEK136h8Z0QCwZGa8WkK0gl...



Analysis of Specific Shallow Water Current for Endemic Fish Conservation at Natuna Islands, Indonesia

¹Hariyadi, ²Johannes Hutabarat, ²Denny Nugroho Sugianto, ²Agus Hartoko, ²Jahved Ferianto Maro, ³Erick Nugraha

¹Faculty Fisheries and Marine Science, Marine Science Doctoral Programe, Diponegoro University, Semarang, Indonesia; ²Faculty of Fisheries and Marine Science, Diponegoro University, Semarang, Indonesia; ³Faculty of Fishing Technology, Jakarta Technical University of Fisheries, South Jakarta, Indonesia; Corresponding author: nugraha_eriq1@yahoo.co.id

Abstract. The research is aimed to built the shallow water current spatial model and to analyse the seasonal sea surface temperature (SST), chlorophyll-a, bathymetry, and identify endemic fish in the Natuna islands seas. The research represent of east season (May to October) and west season (November to April) 2019. Range of SST is 28.0 to 31.0°C, current speed of west and east season is 0.1 to 0.5 m/s, chlorophyll-a content is 0.2 to 1.0 mg/m³, depth range is 0 to 150 m. Two endemic fish are Bombay duck fish (*Harpodon nehereus*) and goatee croacker fish (*Dendrophysa russelli*).

Keywords: Monsoons, Sea surface temperature, chlorophyll-a, Bombay duck fish, goatee croacker fish.

Introduction. Characteristics of Natuna Waters are influenced by seasons. According to Wyrcki 1961; Hartoko et al 2019; Nababan & Simamora 2012; and Deliama 2017, seasons in Indonesia are divided into northwest monsoons (west monsoons), southeast monsoons (east monsoons), and transitional monsoons or transitions between the two. At the time of transition, the wind direction is irregular, and it often rains suddenly. In coastal areas, the characteristics of the waters are also influenced by tides and input from the mainland. The waters of the southwest part of Natuna receive material input from rivers and anthropogenic activities. Several rivers flow into these waters, one of which is the Binjai River, the largest river in the region (Kusumaningtyas et al 2014; Nababan et al 2015). Natuna Sea borders with the South China Sea and countries in the ASEAN region; Vietnam, Cambodia, Singapore, Thailand, and Malaysia, so it is very strategic as one of the important international shipping lanes. The Natuna Sea is also a place for the mass exchange of water from the Indonesian Ocean to the South China Sea, which has a close interaction with the Monsoon that occurs in Indonesia, so it is necessary to know thoroughly about the characteristics of the water resources (Wyrcki 1961; Nababan & Simamora 2012).

Natuna Sea has high biodiversity because of its location directly opposite the South China Sea and the high seas, so there are many endemic species in the waters, including Bombay duck Fish (*Harpodon nehereus*) and Goatee croacker Fish (*Dendrophysa russelii*). With the existence of endemic species in Natuna Sea, it is necessary to conduct specific research in terms of oceanography, especially the surface current patterns, so that they can be the initial data in managing and conserving these species. Currents greatly affect the

distribution pattern of chlorophyll-a and sea surface temperature as important oceanographic variables for pelagic fish in Natuna Sea.

The remote sensing technology approach is very important in mapping the current velocity distribution pattern in Natuna Sea with an analysis model using the MIKE 21 Current Model. Current data was carried out by modeling currents between bathymetry data and tidal data to obtain a model of marine distribution patterns in waters shallow, especially in Natuna Sea. This research was initial research in managing and conserving endemic species in Natuna Sea.

Materials and Method

The research was conducted in Natuna Sea, Natuna in 2019 consisting of representing the eastern monsoon (May to October) and the West monsoon (November to April). The map of the research location can be seen in Figure 1.

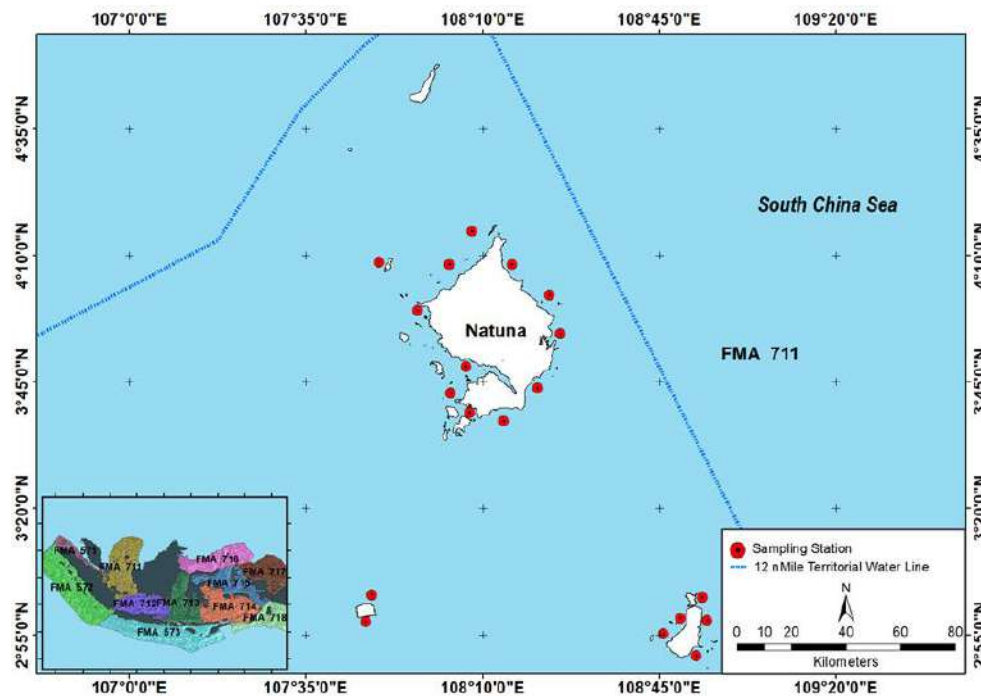


Figure 1. Station points of the field survey

This research was conducted using field observation methods to identify endemic species in Natuna Sea, measuring field current patterns, and modeling current patterns and current velocity using Flow Model FM Mike 21. Satellite data processing was using Aqua Modis Level 3 with Chlorophyll-a data product, sea surface temperature (SST) and water depth using GEBCO (General Bathymetric Chart of the Oceans) data, then extracting data using the ArcGIS 10.8 application and then interpolating using the Kriging method referring to (Maro et al 2021; Hartoko 2010; Hartoko et al 2016; Afifa et al 2020; Wirasatriya et al 2020; Muskananfolo et al 2021).

Data Analysis

Flow Model FM MIKE 21 Flow Model FM Hydrodynamic Module was used to simulate tidal and flow patterns. This module was based on the numerical solution of the two-dimensional water equation. The builder equations in this hydrodynamics module consisted of continuity and momentum equations to simulate current patterns, including: The continuity equation for the two-dimensional flow average depth (average continuity equation), which can be written as:

$$\frac{\partial \zeta}{\partial t} + \frac{\partial p}{\partial x} + \frac{\partial q}{\partial y} = 0 \quad (\text{Equation 2})$$

Momentum equation for flow in the x-axis direction.

$$\frac{\partial p}{\partial t} + \frac{\partial}{\partial x} \left(\frac{p^2}{H} \right) + \frac{\partial}{\partial y} \left(\frac{pq}{H} \right) + gH \frac{\partial \zeta}{\partial x} + \frac{gp\sqrt{p^2+q^2}}{c^2 H^2} - \frac{1}{\rho_w} \left[\frac{\partial}{\partial x} (H\tau_{xx}) + \frac{\partial}{\partial y} (H\tau_{xy}) \right] - \Omega p - fVv_x + \frac{h}{\rho_w} \frac{\partial}{\partial x} (p_a) = 0 \quad (\text{Equation 3})$$

Momentum equation for flow in the y-direction.

$$\frac{\partial q}{\partial t} + \frac{\partial}{\partial y} \left(\frac{q^2}{H} \right) + \frac{\partial}{\partial x} \left(\frac{pq}{H} \right) + gH \frac{\partial \zeta}{\partial y} + \frac{gq\sqrt{p^2+q^2}}{c^2 H^2} - \frac{1}{\rho_w} \left[\frac{\partial}{\partial y} (H\tau_{yy}) + \frac{\partial}{\partial x} (H\tau_{xy}) \right] - \Omega q - fVv_y + \frac{h}{\rho_w} \frac{\partial}{\partial y} (p_a) = 0 \quad (\text{Equation 4})$$

Notes:

x,y	: Coordinate space functions
h	: Water depth
ζ	: Sea level elevation
p,q (x, y, f)	: Density level
g	: Gravitational acceleration
ρ	: Water density
v_x, v_y, v_t	: Wind speed on the x and y axes.
$\tau_{bx} \tau_{by}$: Base shear stress
$\tau_{sx} \tau_{sy}$: Surface shear stress
$\tau_{xx}, \tau_{xy}, \tau_{yx}, \tau_{yy}$: Turbulent shear stress
ω	: Coriolis parameter
ρ_w	: Seawater density
fV	: Wind friction factor

Result and Discussion

Distribution Pattern of Currents, Chlorophyll-a and Sea Surface Temperature in the East Monsoon (May to October)

The current pattern in the east monsoon in May to October 2019 showed the dominant direction of arrival from the south to the north. Based on the difference in color gradients, it can be seen that the velocity of large currents occurred in some parts of the narrow waters flanked by two islands with a speed of 0.1 m/s to 0.5 m/s. The map of the current distribution pattern can be seen in Figure 2.

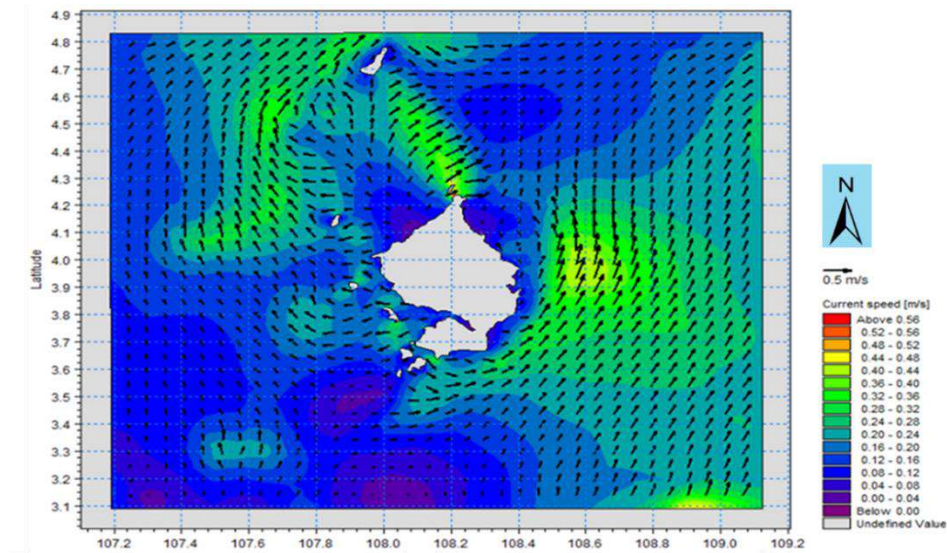


Figure 2. Distribution Pattern of East Monsoon Currents in Natuna Shallow Coastal Waters

The water current in the shallow coastal waters of Natuna was the Ekman current. It has a regular current pattern. The main generator of currents in these waters was the east monsoon that moved from the waters of Java and Sumatra, where the movement of this current entered from the south of the Natuna Sea which moved into the north and northeast of the Natuna waters. This can be caused by the influence of the east monsoon wind that moved from the Indian Ocean waters to the Pacific Ocean waters. The surface current pattern in Natuna waters (Figure 2) showed a very different current direction in the east monsoon (May to October 2019). This current movement also had an impact on the distribution pattern of chlorophyll-a and sea surface temperature (SST) in the east monsoon in the coastal waters of Natuna, with the chlorophyll-a distribution ranging from 0.2 to 1.0 mm^3/m^3 and the SST ranging from 28.0 to 30.0°C. The distribution of chlorophyll-a and east monsoon SST can be seen in Figure 3A and Figure 3B.

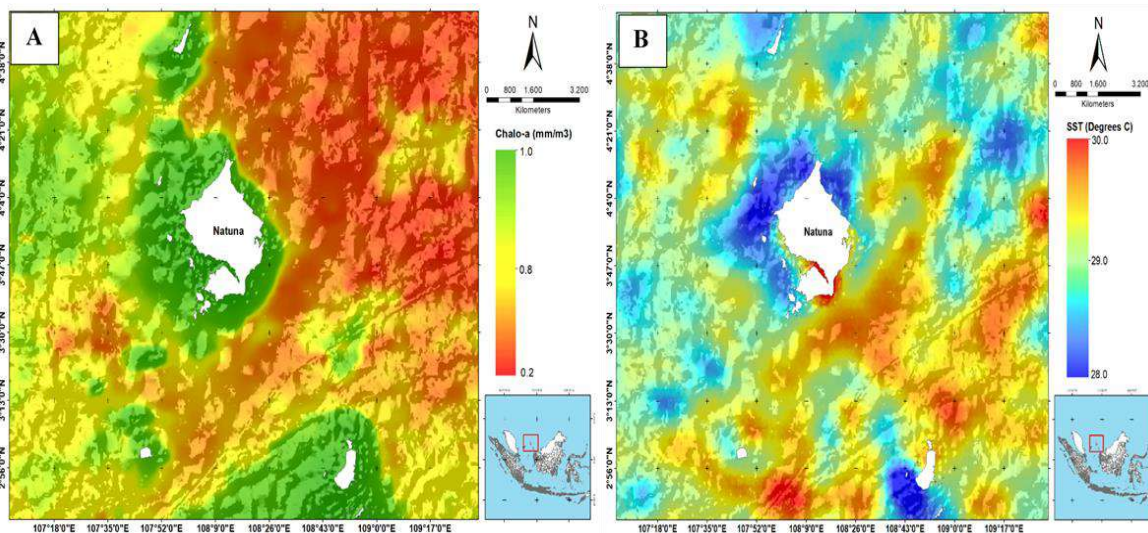


Figure 3. A: Average Chlorophyll-a distribution of East Monsoon;
B. Average SST distribution of East Monsoon

According to the average distribution of chlorophyll-a and SST range in the east monsoon in Natuna waters, it can be elaborated that there was an increase in chlorophyll-a in each coastal area reached 8.0 to 1.0 mm/m^3 with an average SST range of 28.0 to 30.0°C. In the SST range between 28.0 to 29.0°C in the coastal area of Natuna, there was an increase in chlorophyll-a reaching 0.8 to 1.0 mm/m^3 . Comparing the increase in chlorophyll-a and SST to the current distribution pattern in the east monsoon (Figure 2) in Natuna waters, it can be shown that there was a confluence of currents in the coastal area which resulting in a water mass mixing that would increase nutrients and chlorophyll-a in the waters. This tendency would result in a decrease in sea surface temperature in Natuna waters.

Distribution Pattern of Currents, Chlorophyll-a and Sea Surface Temperature in the West Monsoon (November-April)

Research on the distribution pattern of currents, average chlorophyll-a, and average sea surface temperature in the west monsoon in November to December 2019 in Natuna Waters using the MIKE 21 current distribution pattern model and Aqua Modis level 3 data, found the current distribution patterns in Natuna waters ranged from 0.1 m/s to 0.5 m/s in 2019. The current pattern distribution in the west monsoon can be seen in Figure 4.

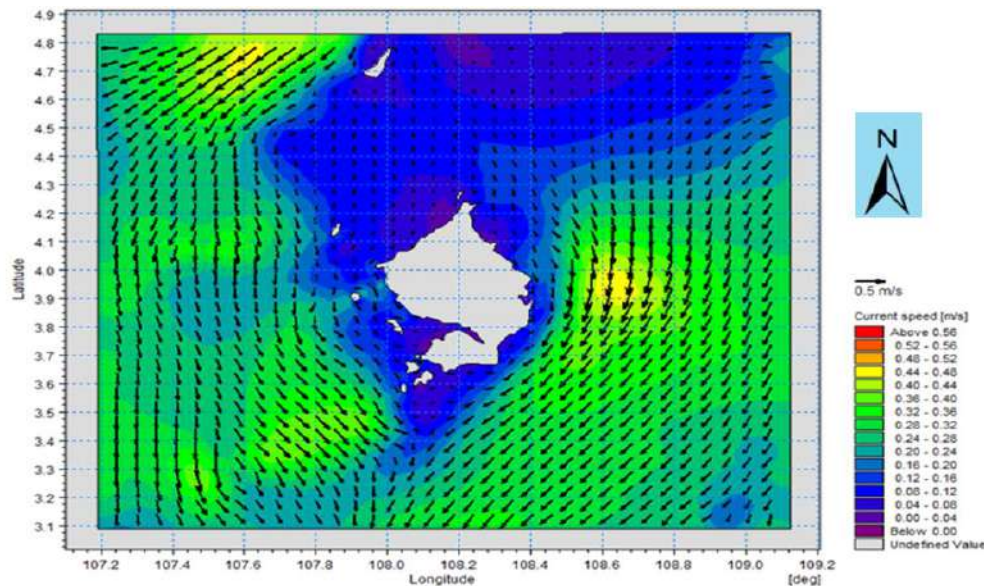


Figure 4. Current Distribution Patterns of West Monsoon in Natuna Sea

Based on Figure 4 about the current distribution pattern in the West monsoon of the Natuna Sea, it can be explained that the direction and pattern of inflow were from the South China Sea, the northern part of Natuna. It was when on the West monsoon when the west wind from the Pacific Ocean that entered Indonesian waters through the South China Sea was high enough that increasing current speed of up to 0.5 m/s, with a current color degradation pattern showing high clusters in the shallow waters of the Natuna Sea.

The average chlorophyll-a in the west monsoon ranged from 0.1 to 0.7 mm/m^3 and the average SST in the west monsoon ranged from 28.0 to 31.0°C. The distribution pattern of the average chlorophyll-a and the average SST in western monsoon in Natuna waters can be seen in Figure 5A and Figure 5B.

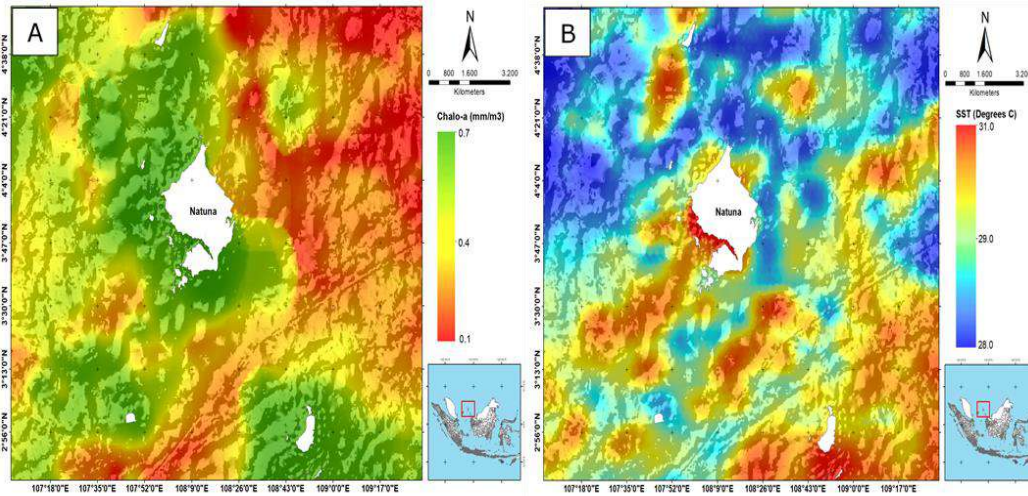


Figure 5. A. Average chlorophyll-a in the west monsoon; B. Average SST in the west monsoon in Natuna Waters

According to Figures 5A and 5B, it can be elaborated that there was an increase in chlorophyll-a reaching 0.7 mm/m^3 in Natuna waters with an average SST range of 28.0 to 29.0°C . Comparing with the current distribution patterns in the west monsoon (Figure 4) in the Natuna waters, it can be explained that the main factor of the current direction pattern was the monsoon wind. In the west monsoon, the wind blew from the Pacific Ocean entering through the South China Sea into the Natuna waters with slower movement toward the coast due to the current collisions from the northern part and the north-western part of the Natuna Sea. This current collision resulted in an increase in chlorophyll-a and a decrease in SST in the shallow waters of the Natuna Sea.

Natuna Waters Depth

The water depth data analysis in Natuna waters used GEBCO (General Bathymetric Chart of the Oceans) data. The data was cropped according to the research location, then was analyzed using 2D, and then was interpolated using a kriging distribution model. Results of the analysis found the depth of the natural waters ranged from 0 to 150 m . The results of the 2D model analysis can be seen in Figure 6.

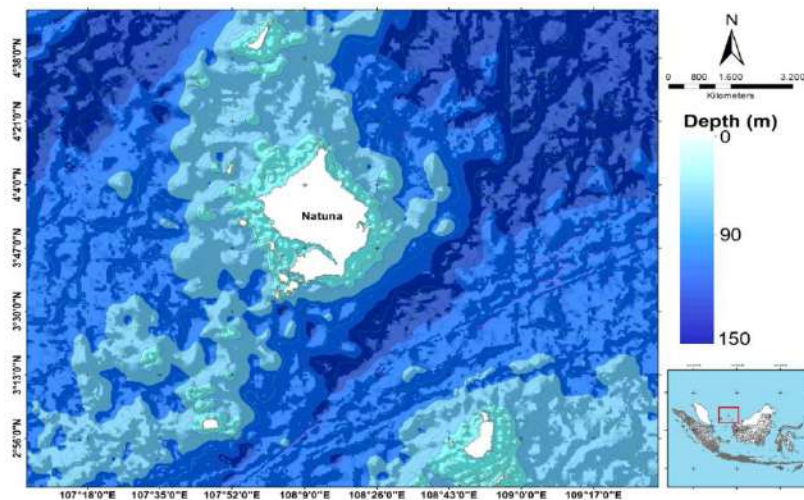


Figure 6. Natuna Waters Depth

Based on the 2D model of the Natuna waters depth, it can be elaborated that in the northern part of Natuna towards the South China Sea, the depth range reached 150 m, while in the coastal part of Natuna, the depth ranged from 0 to 30 m.

Endemic Species in Natuna Waters

Results of the field survey (observations) conducted in Natuna waters and data collection of the species caught in the location through analysis of local market distribution found 2 endemic fish species (fish that exist only in one particular place, and not in others), namely Bombay duck fish (*Harpodon nehereus*) and Goatee croaker fish (*Dendrophysa russelli*). Images of each species can be seen in Figure 7A and Figure 7B.

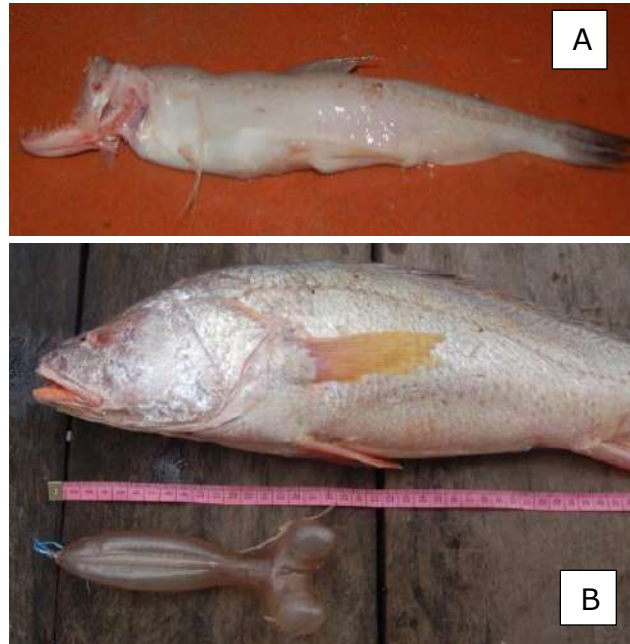


Figure 7. A: Bombay duck fish (*Harpodon nehereus*);
B: Goatee croaker fish (*Dendrophysa russelli*)

Bombay duck fish (*Harpodon nehereus*)

Bombay duck fish has Phylum: *Chordata*; Class: *Actinopterygii*; Order: *Aulopiformes*; Family: *Synodontidae*; Genus: *Harpodon*; Species: *H. Nehereus*; Phylum: *Chordata*; Class: *Pisces*; Order: *Myctophoide*; Family: *Scopelidae*; Genus: *Harpodon*; Species: *Neherous Harpodon*. Lomek fish has a slightly flattened elongated body shape, the tip of the snout is short and rounded, and the tail fin has 3 parts; top, bottom, and middle as a continuation of the scale line. The teeth of the two jaws have various shapes; flat arch, large arch, and small arch. The body shape is bilaterally symmetrical, compressed, while the head shape is blunt (Siddique & Aktar 2011; Jin et al 2012; Bhattacharya et al 2016; Bo et al 2013; Salim et al 2020; Rupsankar 2010).

Harpodon nehereus is a type of demersal fish, the preferred type of substrate is mud and fine sand, especially beaches close to river mouths (Kalhoroa et al 2020; Salim et al 2020; Bhattacharya et al 2016). The fish was located on the bottom of the waters with the speed of sea surface currents to breed in the range of 0.2 to 0.4 m/s with chlorophyll-a content ranging from 0.2 to 0.5 mm/m³ and an SST range ranging from 28 to 30°C in every

appearance of *Harpodon nehereus* at the bottom of the waters (Siddique & Aktar 2011; Bo et al 2013).

Harpodon nehereus is a type of fish in Indonesian waters only found in the waters of Natuna and Bangka Belitung. This fish has important economic value in Natuna, Bangka Belitung, and several other coastal areas in Sumatra because it has important economic value. This fish needs to be protected and conserved in order to be sustainable.

Goatee croaker fish (*Dendrophysa russelli*)

Goatee croaker fish with classification Phylum: *Chordata*; Class: *Actinopterygii*; Order: *Perciformes*; Family: *Sciaenidae*; Genus: *Dendrophysa*; Species: *D. russelli* (Cuvier, 1829). This fish has a slightly flat elongated body (vertical), covered with scales to the head. The first and second dorsal fins are fused (Fig. 7B). The back edge of the front gill cover is serrated. The special feature of the Gerot fish is a small mouth but covered by very thick lips (according to one of the local names of this fish). The pectoral fins are longer and tapered than the pelvic fins. The dorsal fin has 12 spines and 13 to 15 soft fin rays. Gerot fish has a silvery gray body-color, with 4-5 longitudinal dark gray stripes that are dashed and faint on the sides of the body. Three or four of these lines are above the lateral line of the body. On the dorsal fin, there are 2 to 3 bands of brown spots. This fish can reach a size of 80 cm, but generally between 40 to 50 cm (Annisa et al 2018; Suprpto 2017; Khairul et al 2018). This fish has an important economic value, especially in its swimming bubbles. The price of this fish is increasing highly because it has swimming bubbles which are very expensive and contains high collagen. This fish exists in sea waters close to rivers with a water temperature range of 28 to 30°C.

Discussion

Results of the study found that the average range of current velocity patterns in the east and west monsoons in Natuna Waters ranged from 0.1 to 0.5 m/s. The current pattern in the east monsoon moved from the south to the north of Natuna to the South China Sea. According to (Pamungkas 2018; Purba 2019; Maro et al 2021; Hartoko et al 2019; Wirasatriya et al 2020; Muskananfolo et al 2021) it showed that during the east monsoon, the wind moved from the continent of Asia to the continent of Australia, while in the west monsoon, the wind will move from the Australian continent to the Asian continent. The influence of the monsoon wind would also affect the Natuna Coastal waters, especially due to its location in between the Natuna Sea, Sumatra Sea, and the Java Sea, which is the monsoon wind flow area (Setiawan & Pamungkas 2017). The research found that there was a collision of currents that had an impact on the distribution pattern of chlorophyll-a and sea surface temperature (SST) in the East monsoon in the coastal waters of Natuna. Results of the analysis of the average distribution of chlorophyll-a were in the range of 0.2 to 1.0 mm/m² and the SST range of 28.0 to 30.0°C. Research done by (Muskananfolo et al 2021; Pamungkas 2018; Maro et al 2021; Hartoko 2010; Sukresno et al 2015; Sukresno et al 2018; Lebrec et al 2019) found that if there is a collision with sea surface currents in a body of water, it will increase chlorophyll-a and decreasing SST on the sea surface. This is common in coastal areas because of the location of small islands that are close to each other, thus blocking the movement of currents from deep waters to shallow waters. The characteristics of these waters tend to have a high level of fertility so that many organisms roam in these waters for shelter, foraging, and spawning. Meanwhile, in the West monsoon (November to December) the movement of the current pattern moved in from the northern part of Natuna, from the South China Sea to the Natuna coastal waters. Results of the study found that the current movement was influenced by the west monsoon which blew strongly from the Pacific Ocean to the South China Sea, then to the Natuna Coast, to the Sumatra Sea and the Java Sea. According to (Hartoko et al 2019; Maro et al 2021; Wirasatriya et al 2020; Muskananfolo et al 2021) the movement of incoming currents from the northern part

of Indonesia was caused by the west monsoon wind blowing from the Pacific Ocean to the Indian Ocean, resulting in a significant increase in current speed during that season.

During the West monsoon, there was an upwelling occurred in the Natuna coastal waters, resulting in a decrease in SST and chlorophyll-a. Mixing of seawater mass (upwelling) in a body of water could decrease SST and chlorophyll-a at sea level. Waters that have upwelling characteristics are indicated as fertile waters for nutrients and chlorophyll-a so that many marine organisms make these waters a place to migrate/their space to find food and spawn (García-Reyes et al 2015; Chung & Gong 2019; Putra et al 2016; Wirasatriya et al 2020; Sukresno et al 2015; Putra & Mustika 2021).

Results of the study during the west and east monsoons found 2 types of Natuna endemic fish, namely *Harpodon nehereus* and *Dendrophysa russelli* which were found in the Natuna coastal waters with surface current velocity patterns ranging from 0.1 to 0.5 m/s, chlorophyll-a sea level ranged from 0.2 to 1.0 mm/m³, the average SST ranged from 28 to 30°C, and the average depth of the waters ranged from 0 to 150 m. According to Siddique & Aktar 2011; Jin et al 2012; Bhattacharya et al 2016; Annisa et al 2016; Suprpto 2017, found the location of the appearance of *Harpodon nehereus* and *Dendrophysa russelli* in coastal waters that are directly connected to the sea, where the average sea surface temperature ranging from 27 to 30°C, sea surface currents ranged from 0.3 to 0.5 m/s, and the average depth ranged from 0 to 20 meters. Management of these endemic fish species needs to be done so that these two species can be sustainable. Considering the 2 types of fish that have important economic value, the public's interest in taking them to improve the economy is even greater. Therefore, there is a need for sustainable management of *Harpodon nehereus* and *Dendrophysa russelli* species in Natuna waters to be sustainable.

Conclusions

The research result of the oceanographic variable analysis mainly the depth, SST, chlorophyll-a content and the monsoonal current speed range, will support for site selection and the attempt of the endemic fish conservation. Mainly in the shallow water coastal areas around Natuna islands. The research represent of east season (May to October) and west season (November to April) 2019. Range of SST is 28.0 to 31.0°C, current speed of west and east season is 0.1 to 0.5 m/s, chlorophyll-a content is 0.2 to 1.0 mg/m³, depth range is 0 to 150 m. Two endemic fish are *Harpodon nehereus* and *Dendrophysa russelli*.

Acknowledgements.

The authors would like to thank very much to the Dean Faculty of Fisheries and Marine Science, Diponegoro University, Semarang. Indonesia for the research grant. Also all other parties for their help during the field sampling and laboratory analysis.

References

- Afifa F. H., Hartoko A., Purnomo P. W., 2020 Changes And Vulnerability Of Coral Reef Ecosystem Based On Field And Remote Sensing Data on Kemujan Island, Karimunjawa Islands, Indonesia. *AAFL Bioflux* 13(2): 1016-1026
- Annisa C. A., Rahardjo M. F., Zahid A., Simanjuntak C. P. H., Asriansyah A., Aditriawan R. M., 2018 Diet and Feeding Habits of the Javelin Grunt, *Pomadasys kaakan* (Cuvier, 1830) in Pabean Bay, West Java. *Gadjah Mada University of Fisheries Journal*. 20(1): 31-40. [In Indonesian]
- Bhattacharya T., Ghorai T., Dora K. C., Sarkar S., Chowdhury S., 2016 Influence Of Chemical Preservatives On The Quality And Shelf-Life Of Dried Bombay Duck (*Harpodon Nehereus*), *The Asian Journal Of Animal Science*, 11(1): 1-8.

- Bo Z., Xu T., Wang R., Jin X., Sun Y., 2013 Complete Mitochondrial Genome Of The Bombay Duck *Harpodon nehereus* (*Aulopiformes*, *Synodontidae*). *Mitochondria DNA. The Journal of DNA Mapping, Sequencing, and Analysis*. 24(6): 660-662.
- Chung C. C., Gong G. C., 2019 Attribution Of The Growth Of A Distinct Population Of *Synechococcus* To The Coverage Of Lateral Water On An Upwelling. *Terrestrial, Atmospheric and Oceanic Sciences*. Vol. 30: 575-587.
- Deliana, 2017 Estimation of Sustainable Potential and Utilization Level of Sea Anemone (*Sticodactyla gigantea*) in Makassar Strait Waters. [Thesis]. Water Resources Management Study Program, Department of Fisheries, Faculty of Marine and Fishery Sciences, Hasanuddin University, Makassar. P. 27 [in Indonesian].
- García-Reyes M., Sydeman W. J., Schoeman D. S., Rykaczewski R. R., Black B. A., Smit A. J., Bograd S. J., 2015 Under Pressure: Climate Change, Upwelling, and Eastern Boundary Upwelling Ecosystems. *Frontiers in Marine Science*. 2:109.
- Hartoko A., 2010 Spatial Distribution Of *Thunnus Sp*, Vertical And Horizontal Sub-Surface Multilayer Temperature Profiles Of *In-Situ* Agro Float Data In Indian Ocean. *Journal Of Coastal Development*, 14(1): 61–74.
- Hartoko A., Helmi M., Sukarno M., Hariyadi, 2016 Spatial Tsunami Wave Modelling For The South Java Coastal Area, Indonesia. *International Journal of GEOMATE*, 11(25): 2455–2460.
- Hartoko A., Febrianto A., Pamungkas A., Fachruddin I., Helmi M., Hariyadi, 2019 The Myth and Legend of Sadai and Gaspar Strait Bangka Belitung (Banca-Billiton) and Oceanographic Conditions, *International Journal of GEOMATE*, 17(62): 212–218.
- Jin T., Wu Y., Wang Q., 2012 Production and characteristics of protein hydrolysates from bombay duck (*Harpodon nehereus*). *Journal of Food Processing and Preservation*. 36(1): 30 - 37.
- Kalhoroa M. T., Yongtong M., Kalhorob M. A., Shahc S. B. H., Memond A. M., Moshine M., Dahria M. A., 2020 Resource evaluation, stock, growth and mortality of the Bombay duck (*Harpodon nehereus* Hamilton, 1822) fishery in the coastal waters of Pakistan. *Indian Journal of Geo Marine Sciences* Vol. 49 (07): 1222-1228.
- Khairul, Mawardi W., Riyanto M., 2018 Use of Blue Light Emitting Diode (Led) Lamps on Floating Chart Catches in Aceh Jaya District, *Albacore Marine Fisheries Research Journal*, 1(2): 235-243. [In Indonesian]
- Kusumaningtyas M. A., Bramawanto R., Daulat A., Pranowo W. S., 2014 The water quality of Natuna coastal water during transitional season. *DEPIK Journal of Science - Aquatic, Coastal and Fishery Sciences*. 3(1): 10-20 [in Indonesia].
- Lebrec M., Stefanski S., Gates R., Acar S., Golbuu Y, Claudel-Rusin A., Kurihara H., Rehdanz K., Paugam-Baudoin D., Tsunoda T., Swarzenski P. W., 2019 Ocean acidification impacts in select Pacific Basin coral reef ecosystems. *Regional Studies in Marine Science*. 28: 1 - 8.
- Maro J. F., Hartoko A., Anggoro S., Muskananfolo M. R., Nugraha E., 2021 Sea surface temperature and chlorophyll-a concentrations from MODIS satellite data and presence of cetaceans in Savu, Indonesia. *AACL Bioflux* 14(3): 1190-1200.
- Muskananfolo M. R., Jumsar, Wirasatriya A., 2021 Spatio-Temporal Distribution Of Chlorophyll-A Concentration, Sea Surface Temperature And Wind Speed Using Aqua-Modis Satellite Imagery Over the Savu Sea, Indonesia. *Remote Sensing Applications: Society and Environment*. 22:
- Nababan B., Hadianti S., Natih N. M. N., 2015 Dynamic Of Sea Level Anomaly Of Indonesian Waters. *Journal of Tropical Marine Science and Technology*. 7(1): 259-272. [in Indonesian]
- Nababan B., Simamora K., 2012 Variability Of Chlorophyll-A Concentration And Sea Surface Temperature Of Natuna Waters. *Journal of Tropical Marine Science and Technology*. 4(1): 121-134. [in Indonesian]

- Pamungkas A., 2018 Characteristics of Oceanographic Parameters (Tidals, Currents, and Waves) in the North and South Waters of Bangka Island. *Marina Oceanography Bulletin*. 7(1): 51-58. [in Indonesian]
- Purba N. P., Pranowo W. S., Simanjuntak S. M., Faizal I., Jasmin H. H., Handyman D. I. W., Mulyani P. G., 2019 Trajectory of microplastics at Savu Sea Marine National Park, East Nusa Tenggara. *DEPIK. Journal of Aquatic, Coastal and Fishery Sciences*, 8(2): 125-134 [in Indonesia].
- Putra M. I. H., Lewis S. A., Kurniasih E. M., Prabuning D., Faiqoh E., 2016 Plankton Biomass Models Based on GIS and Remote Sensing Technique for Predicting Marine Megafauna Hotspots in the Solor Waters. *IOP Conference Series: Earth and Environmental Science*. 47: 1 - 19.
- Putra M. I. H., Mustika P. L. K., 2021 Maximum entropy model: Estimating The Relative Suitability Of Cetacean Habitat In The Northern Savu Sea, Indonesia. *Marine Mammal Science*. 37(1): 6-28.
- Rupsankar C., 2010 Improvement Of Cooking Quality And Gel Formation Capacity Of Bombay Duck (*Harpodon nehereus*) fish meat. *Journal of Food Science and Technology*, 47(5): 534-540.
- Salim G., Handayani K. R., Anggoro S., Indarjo A., Syakti A. D., Ibrahim A. J., Ransangan J., Prakoso L. Y., 2020 Morphometric Analysis Of Harpodon Nehereus, Harpiosquilla Raphidea, And Scylla Serrata In The Coastal Waters Of Tarakan, North Kalimantan, Indonesia. *Biodiversitas*, 21(10): 4829-4838.
- Setyawan W. B., Pamungkas A., 2017 Comparison of Oceanographic Characteristics of the North and South Coasts of Java Island: Tides, Currents, and Waves Proceedings of the 2017. National Marine and Fisheries Seminar III. Trunojoyo University, Madura. 191-202. [in Indonesian].
- Siddique M. A. M., Aktar M., 2011 Changes of Nutritional Value of Three Marine Dry Fishes (*Johnius dussumieri*, *Harpodon nehereus* and *Lepturacanthus savala*) during Storage. *Food and Nutrition Sciences*, 02(10): 1082-1087.
- Sukresno B., Hanintyo R., Kusuma D. W., Jatisworo D., Murdimanto A., 2018 Three-Way Error Analysis Of Sea Surface Temperature (SST) Between Himawari-8, Buoy, And Mur SST In Savu Sea. *International Journal of Remote Sensing and Earth Sciences (IJReSES)*, 15(1): 25-36.
- Sukresno B., Hartoko A., Sulistyio B., Subiyanto, 2015 Empirical Cumulative Distribution Function (ECDF) Analysis of Thunnus sp. Using ARGO Float Sub-surface Multilayer Temperature Data in Indian Ocean South of Java. *International Conference on Tropical and Coastal Region Eco-Development 2014 (ICTCRED 2014)*. *Procedia Environmental Sciences*. 23: 358-367.
- Suprpto S., 2017 Demersal Fish Biodiversity Index in Arafura Waters. *Indonesian Journal of Fisheries Research*. 14(3). 321-335. [in Indonesian]
- Wirasatriya A., Setiawan J. D., Sugianto D. N., Rosyadi I. A., Haryadi, Winarso G., Setiawan R. Y., Susanto R. D., 2020 Ekman Dynamics Variability Along The Southern Coast Of Java Revealed By Satellite Data. *International Journal of Remote Sensing*. 41(21): 8475-8496.
- Wyrtki K., 1961 Physical oceanography of the Southeast Asian waters: in Scientific Results of Maritime Investigations of the South China Sea and Gulf of Thailand 1959-1961. *Naga Report 2*. University of California/Scripps Institute of Oceanography, California. P. 195.

Received: xxxxxxx. Accepted: xxxxxxx. Published online: xxxxxxxxx.

Authors:

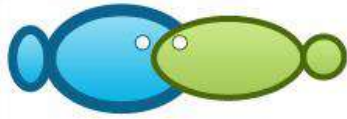
Haryadi. Faculty of Fisheries and Marine Science, Marine Science Doctoral Programe, Diponegoro University, Prof. Sudarto Street, Semarang 50275, Central Java, Indonesia. e-mail: hargeoku@gmail.com

AAFL Bioflux, 2021, Volume xx, Issue x.

Johannes Hutabarat. Faculty of Fisheries and Marine Science, Diponegoro University, Prof. Sudarto Street, Semarang 50275, Central Java, Indonesia. e-mail: johannesfpik@gmail.com
Denny Nugroho Sugiarto. Faculty of Fisheries and Marine Science, Diponegoro University, Prof. Sudarto Street, Semarang 50275, Central Java, Indonesia. e-mail: dennysugiarto@yahoo.com
Agus Hartoko. Faculty of Fisheries and Marine Science, Diponegoro University, Prof. Sudarto Street, Semarang 50275, Central Java, Indonesia. e-mail: agushartoko.undip@gmail.com
Jahved Ferianto Maro. Faculty of Fisheries and Marine Science, Diponegoro University, Prof. Sudarto Street, Semarang 50275, Central Java, Indonesia. e-mail: yantogisuntrib@gmail.com
Erick Nugraha, Faculty of Fishing Technology, Jakarta Technical University of Fisheries, Jakarta, Indonesia, AUP Street, Pasarminggu 12520, South Jakarta, Indonesia. e-mail: nugraha_eriq1@yahoo.co.id

How to cite this article:

Hariyadi, Hutabarat J., Sugiarto D. N., Hartoko A., Maro J. F., Nugraha E., 2021 Analysis of Specific Shallow Water Current for Endemic Fish Conservation at Natuna Islands, Indonesia. AACL Bioflux xxxxxx



Submission letter

Article title:

Analysis of Specific Shallow Water Current for Endemic Fish Conservation at Natuna Islands, Indonesia.

Hereby I would like to submit the manuscript entitled “Analysis of Specific Shallow Water Current for Endemic Fish Conservation at Natuna Islands, Indonesia” to Aquaculture, Aquarium, Conservation & Legislation - International Journal of the Bioflux Society.

This manuscript was not submitted or published to any other journal. The authors declare that the manuscript is an original paper and contain no plagiarised text. All authors declare that they are not currently affiliated or sponsored by any organization with a direct economic interest in subject of the article. My co-authors have all contributed to this manuscript and approve of this submission.

Name of the authors:

Hariyadi,

Johannes Hutabarat,

Denny N Sugianto

Agus Hartoko,

Jahved F Maro

Erick Nugraha
(Corresponding author)

June 08, 2021

Tulis

Yahoo 10 rb

nugrahaeriq.en... 9.7 rb

Email Masuk 10 rb

Belum Dibaca

Berbintang

Draft 120

Terakhir

Arsip

Spam

Sampah

Lebih sedikit

Tampilan Sembunyikan

Foto

Dokumen

Langganan

Folder Sembunyikan

+ Folder Baru

Eni Kovacs <ek.bioflux@gmail.com>
Kepada: erick nugraha
Rab, 9 Jun 2021 jam 00:04

Dear Dr. Nugraha,

Thank you for your interest in publishing with us.

The editorial team will assess your manuscript and I will get back to you as soon as possible with the result.

Tampilkan pesan asli

Kind regards,
Editor AAAL Bioflux
Eniko Kovacs

Balas, Balas ke Semua atau Teruskan

Kirim

Eni Kovacs Q
ek.bioflux@gmail.com
➔ Tambah ke kontak

Receive 15% Off Your Order

Get a discount on your order by entering EXTRA15. Applies to English Editing and more.

Download now

Tulis

10 kb

nuagrahaeriq.en... 9.7 kb

Email Masuk 10 kb

Belum Dibaca

Berbintang

Draft 120

Terakhir

Arsip

Spam

Sampah

Lebih sedikit

Tampilan Sembunyikan

Foto

Dokumen

Langganan

Folder Sembunyikan

+ Folder Baru

Preliminary acceptance Yahoo/Email M...
Eni Kovacs <ekbioflux@gmail.com> Kepada: erick nugraha Sab, 12 Jun 2021 jam 03:44

Dear Dr. Nugraha,

We would like to inform you that after the preliminary evaluation your paper is qualified for processing (reviewing). However, please respect the page formatting requirement, leaving the footer exactly as it is in the model on our website, including the positioning and the page numbering.

Before proceeding to the review please consider that a processing publication fee of 250 USD is required. The average duration of the publication process is 10 weeks, but it can be reduced in exchange of a priority tax of 50 USD (<http://www.bioflux.com.ro/journal/>).

In case the manuscript is not published, the author or his/her institution is reimbursed (exceptions are made in the cases of poor feedback from authors or withdrawal/rejection due to multiple submissions).

I will be your editor and I will stay at your disposition for all the aspects concerning your manuscript.

Concerning the payment procedure, you will find all the details below and I would like to kindly ask you to send me the scanned receipt of the payment in order to start the publishing process. Upon reception of your payment receipt we will send you the invoice.

1st payment option:
Beneficiary:
Bioflux SRL
Cluj-Napoca
Country: Romania, European Union;
SWIFT CODE of the bank: BTRLR022

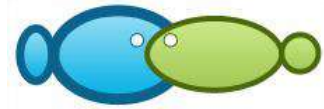
Account USD:
RO68BTRL01302202L28614XX

Bank:
BANCA TRANSILVANIA

Important! When bank transfer is used to pay a publication fee, please choose the right option, which is 'US' (among the three options you have: Ben, Our, Us). The option 'Us' means that **all the transfer fees are at your charge**. Please note that in case you do not specify the 'Us' option, the payment will not be valid.

Eni Kovacs Q
ekbioflux@gmail.com
+ Tambah ke kontak

Receive 15% Off Your Order
Enter EXTRA15 for a 15% discount on all AJE services



Bioflux (publishing house)
54 Ceahlau Street,
Cluj-Napoca 400488,
Romania, European Union

Certificate/Letter of preliminary acceptance

This certificate shows that your paper:
**Analysis of Specific Shallow Water Current for Endemic Fish Conservation at
Natuna Islands, Indonesia**

Authors:
**Hariyadi, Johannes Hutabarat, Denny Nugroho Sugianto, Agus Hartoko, Jahved
Ferianto Maro, Erick Nugraha**

was preliminary accepted for publication, with revision, in volume 14 (2021)
of the scientific/academic journal: Aquaculture, Aquarium, Conservation & Legislation –
International Journal of the Bioflux Society.

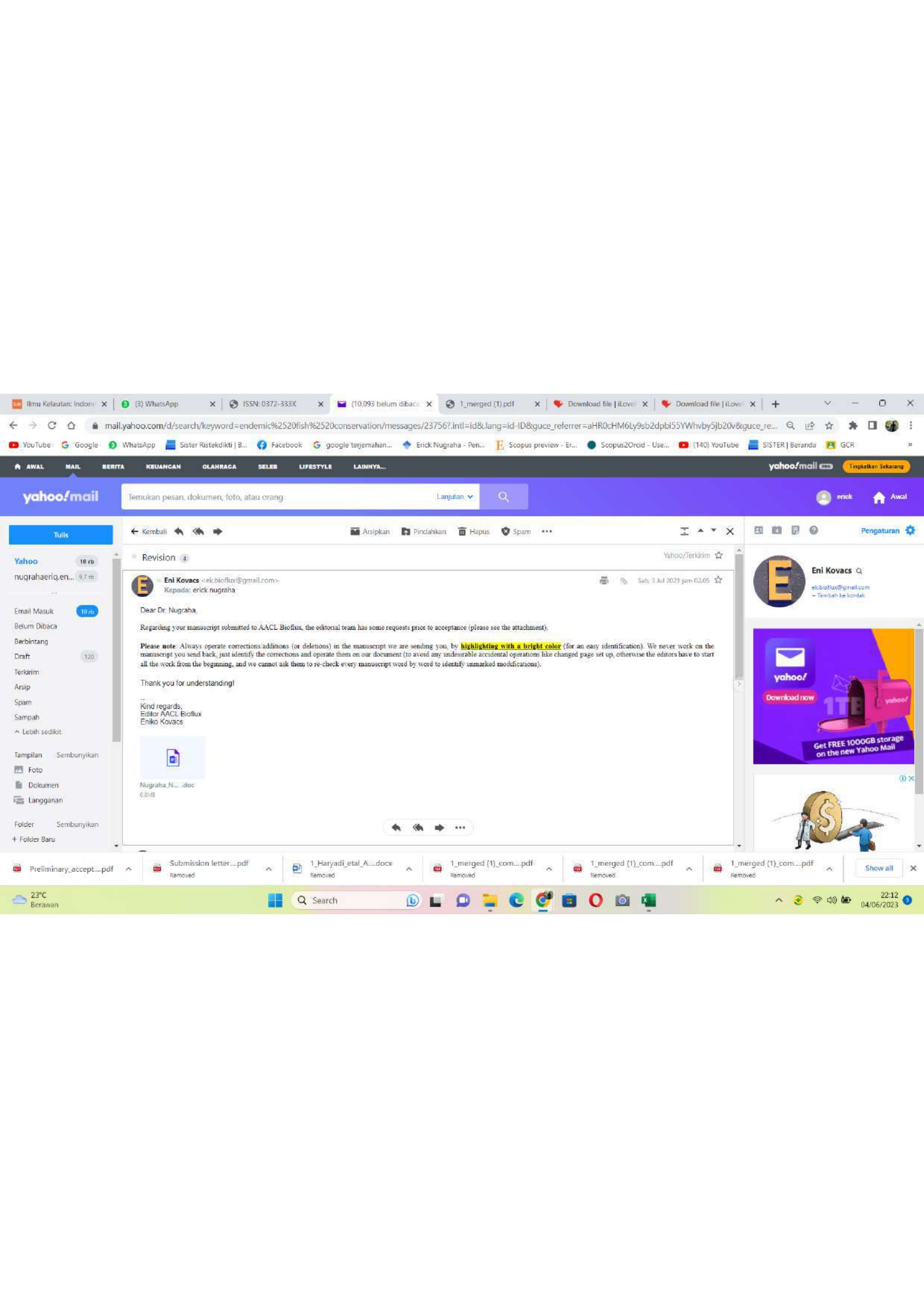
AAAL Bioflux is covered by Thomson ISI Web of Knowledge via:

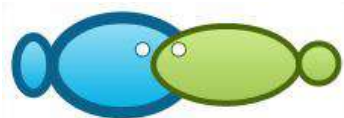
- Zoological Record (Biosis) and
- CAB Abstracts (CABI)

Thank you for publishing with us!

Sincerely yours,
Editor Researcher
Eniko Kovacs, PhD







Analysis of specific shallow water current for endemic fish conservation at Natuna Islands, Indonesia

¹Hariyadi, ²Johannes Hutabarat, ²Denny N. Sugianto, ²Agus Hartoko, ²Jahved F. Maro, ³Erick Nugraha

¹ Faculty Fisheries and Marine Science, Marine Science Doctoral Programme, Diponegoro University, Semarang, Indonesia; ² Faculty of Fisheries and Marine Science, Diponegoro University, Semarang, Indonesia; ³ Faculty of Fishing Technology, Jakarta Technical University of Fisheries, South Jakarta, Indonesia; Corresponding author: E. Nugraha, nugraha_eriq1@yahoo.co.id

Abstract. The research is aimed to built the shallow water current spatial model and to analyse the seasonal sea surface temperature (SST), chlorophyll-a, bathymetry, and identify endemic fish in the Natuna islands seas. The research represent of east season (May to October) and west season (November to April) 2019. Range of SST is 28.0 to 31.0°C, current speed of west and east season is 0.1 to 0.5 m s⁻¹, chlorophyll-a content is 0.2 to 1.0 mg m⁻³, depth range is 0 to 150 m. Two endemic fish are Bombay duck fish (*Harpodon nehereus*) and goatee croaker fish (*Dendrophysa russellii*).

Key Words: monsoons, Sea surface temperature, chlorophyll-a, Bombay duck fish, goatee croaker fish.

Introduction. Characteristics of Natuna Waters are influenced by seasons. According to Wyrтки 1961, Hartoko et al 2019, Nababan & Simamora 2012, and Deliama 2017, seasons in Indonesia are divided into northwest monsoons (west monsoons), southeast monsoons (east monsoons), and transitional monsoons or transitions between the two. At the time of transition, the wind direction is irregular, and it often rains suddenly. In coastal areas, the characteristics of the waters are also influenced by tides and input from the mainland. The waters of the southwest part of Natuna receive material input from rivers and anthropogenic activities. Several rivers flow into these waters, one of which is the Binjai River, the largest river in the region (Kusumaningtyas et al 2014; Nababan et al 2015). Natuna Sea borders with the South China Sea and countries in the ASEAN region; Vietnam, Cambodia, Singapore, Thailand, and Malaysia, so it is very strategic as one of the important international shipping lanes. The Natuna Sea is also a place for the mass exchange of water from the Indonesian Ocean to the South China Sea, which has a close interaction with the Monsoon that occurs in Indonesia, so it is necessary to know thoroughly about the characteristics of the water resources (Wyrтки 1961; Nababan & Simamora 2012).

Natuna Sea has high biodiversity because of its location directly opposite the South China Sea and the high seas, so there are many endemic species in the waters, including Bombay duck fish (*Harpodon nehereus*) and Goatee croaker fish (*Dendrophysa russellii*). With the existence of endemic species in Natuna Sea, it is necessary to conduct specific research in terms of oceanography, especially the surface current patterns, so that they can be the initial data in managing and conserving these species. Currents greatly affect the distribution pattern of chlorophyll-a and sea surface temperature as important oceanographic variables for pelagic fish in Natuna Sea.

The remote sensing technology approach is very important in mapping the current velocity distribution pattern in Natuna Sea with an analysis model using the MIKE 21 Current Model. Current data was carried out by modeling currents between bathymetry

data and tidal data to obtain a model of marine distribution patterns in waters shallow, especially in Natuna Sea. This research was initial research in managing and conserving endemic species in Natuna Sea.

Material and Method

Description of the study site. The research was conducted in Natuna Sea, Natuna in 2019 consisting of representing the eastern monsoon (May to October) and the West monsoon (November to April). The map of the research location can be seen in Figure 1.

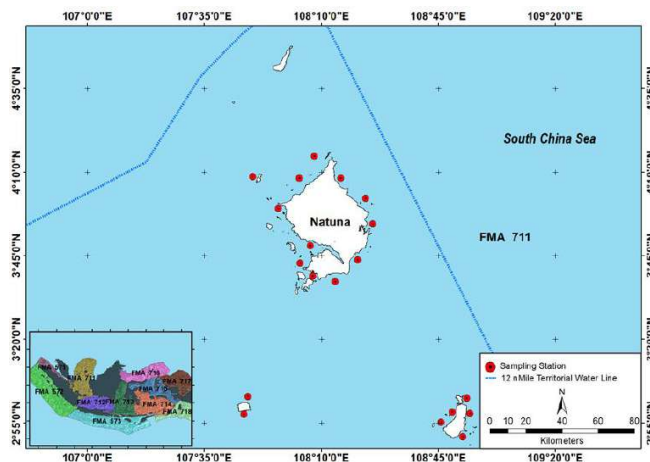


Figure 1. Station points of the field survey.

Data collection. This research was conducted using field observation methods to identify endemic species in Natuna Sea, measuring field current patterns, and modeling current patterns and current velocity using Flow Model FM Mike 21. Satellite data processing was using Aqua Modis Level 3 with Chlorophyll-a data product, sea surface temperature (SST) and water depth using GEBCO (General Bathymetric Chart of the Oceans) data, then extracting data using the ArcGIS 10.8 application and then interpolating using the Kriging method referring to (Maro et al 2021; Hartoko 2010; Hartoko et al 2016; Afifa et al 2020; Wirasatriya et al 2020; Muskananfolia et al 2021).

Data analysis. Flow Model FM MIKE 21 Flow Model FM Hydrodynamic Module was used to simulate tidal and flow patterns. This module was based on the numerical solution of the two-dimensional water equation. The builder equations in this hydrodynamics module consisted of continuity and momentum equations to simulate current patterns, including: The continuity equation for the two-dimensional flow average depth (average continuity equation), which can be written as:

$$\frac{\partial \zeta}{\partial t} + \frac{\partial p}{\partial x} + \frac{\partial q}{\partial y} = 0$$

Commented [WU1]: Source?

Momentum equation for flow in the x-axis direction.

$$\frac{\partial p}{\partial t} + \frac{\partial}{\partial x} \left(\frac{p^2}{H} \right) + \frac{\partial}{\partial y} \left(\frac{pq}{H} \right) + gH \frac{\partial \zeta}{\partial x} + \frac{gp\sqrt{p^2+q^2}}{c^2 H^2} - \frac{1}{\rho_w} \left[\frac{\partial}{\partial x} (H\tau_{xx}) + \frac{\partial}{\partial y} (H\tau_{xy}) \right] - \Omega p - fVV_x + \frac{h}{\rho_w} \frac{\partial}{\partial x} (p_\alpha) = 0$$

Commented [WU2]: Source?

Momentum equation for flow in the y-direction.

$$\frac{\partial q}{\partial t} + \frac{\partial}{\partial y} \left(\frac{q^2}{H} \right) + \frac{\partial}{\partial x} \left(\frac{pq}{H} \right) + gH \frac{\partial \zeta}{\partial y} + \frac{gq \sqrt{p^2 + q^2}}{c^2 H^2} - \frac{1}{\rho_w} \left[\frac{\partial}{\partial y} (H \tau_{yy}) + \frac{\partial}{\partial x} (H \tau_{xy}) \right] - \Omega p - fVV_y + \frac{h}{\rho_w} \frac{\partial}{\partial y} (p_\alpha) = 0$$

Commented [WU3]: Source?

Where:

x, y - coordinate space functions;
 h - water depth;
 ζ - sea level elevation;
 p, q (x, y, f) - density level;
 g - gravitational acceleration;
 ρ - water density;
 v_x, v_y, v_t - wind speed on the x and y axes;
 $\tau_{bx} \tau_{by}$ - base shear stress;
 $T_{sx} T_{sy}$ - surface shear stress;
 $T_{xx}, T_{xy}, T_{yx}, T_{yy}$ - turbulent shear stress;
 ω - coriolis parameter;
 ρ_w - seawater density;
 f_v - wind friction factor.

Results and Discussion

Distribution pattern of currents, chlorophyll-a and sea surface temperature in the east monsoon (May to October). The current pattern in the east monsoon in May to October 2019 showed the dominant direction of arrival from the south to the north. Based on the difference in color gradients, it can be seen that the velocity of large currents occurred in some parts of the narrow waters flanked by two islands with a speed of 0.1 m s^{-1} to 0.5 m s^{-1} . The map of the current distribution pattern can be seen in Figure 2.

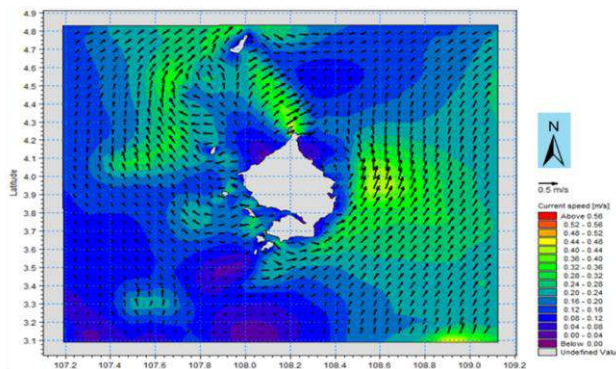


Figure 2. Distribution pattern of east monsoon currents in Natuna shallow coastal waters.

The water current in the shallow coastal waters of Natuna was the Ekman current. It has a regular current pattern. The main generator of currents in these waters was the east monsoon that moved from the waters of Java and Sumatra, where the movement of this current entered from the south of the Natuna Sea which moved into the north and northeast of the Natuna waters. This can be caused by the influence of the east monsoon wind that moved from the Indian Ocean waters to the Pacific Ocean waters. The surface current pattern in Natuna waters (Figure 2) showed a very different current direction in the east monsoon (May to October 2019). This current movement also had an impact on the distribution pattern of chlorophyll-a and sea surface temperature (SST) in the east monsoon in the coastal waters of Natuna, with the chlorophyll-a distribution ranging from

0.2 to 1.0 mm m⁻² and the SST ranging from 28.0 to 30.0°C. The distribution of chlorophyll-a and east monsoon SST can be seen in Figure 3A and Figure 3B.

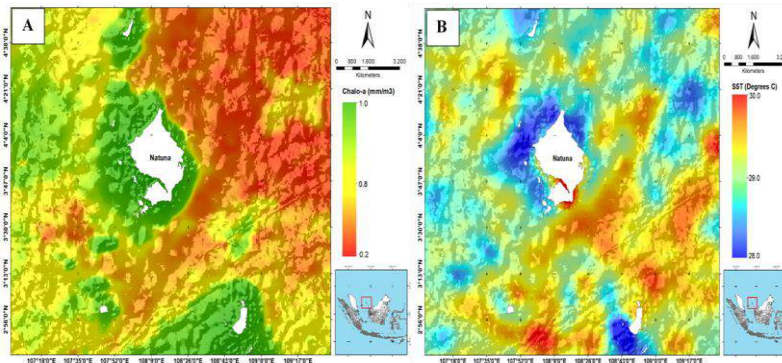


Figure 3. A: Average Chlorophyll-a distribution of East Monsoon; B: Average SST distribution of East Monsoon.

According to the average distribution of chlorophyll-a and SST range in the east monsoon in Natuna waters, it can be elaborated that there was an increase in chlorophyll-a in each coastal area reached 8.0 to 1.0 mm m⁻³ with an average SST range of 28.0 to 30.0°C. In the SST range between 28.0 to 29.0°C in the coastal area of Natuna, there was an increase in chlorophyll-a reaching 0.8 to 1.0 mm m⁻³. Comparing the increase in chlorophyll-a and SST to the current distribution pattern in the east monsoon (Figure 2) in Natuna waters, it can be shown that there was a confluence of currents in the coastal area which resulting in a water mass mixing that would increase nutrients and chlorophyll-a in the waters. This tendency would result in a decrease in sea surface temperature in Natuna waters.

Distribution pattern of currents, chlorophyll-a and sea surface temperature in the west monsoon (November-April). Research on the distribution pattern of currents, average chlorophyll-a, and average sea surface temperature in the west monsoon in November to December 2019 in Natuna Waters using the MIKE 21 current distribution pattern model and Aqua Modis level 3 data, found the current distribution patterns in Natuna waters ranged from 0.1 m s⁻¹ to 0.5 m s⁻¹ in 2019. The current pattern distribution in the west monsoon can be seen in Figure 4.

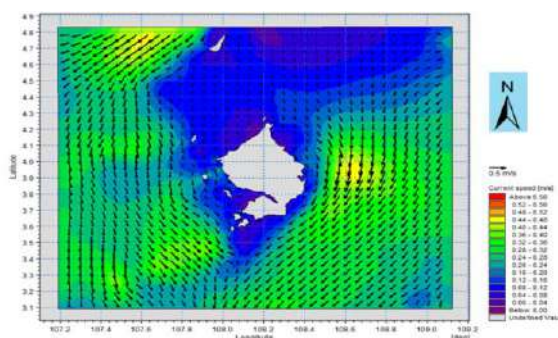


Figure 4. Current distribution patterns of West Monsoon in Natuna Sea.

Based on Figure 4 regarding the current distribution pattern in the West monsoon of the Natuna Sea, the direction and pattern of inflow were from the South China Sea, the

northern part of Natuna. It was when on the West monsoon when the west wind from the Pacific Ocean that entered Indonesian waters through the South China Sea was high enough that increasing current speed of up to 0.5 m s^{-1} , with a current color degradation pattern showing high clusters in the shallow waters of the Natuna Sea.

The average chlorophyll-a in the west monsoon ranged from 0.1 to 0.7 mm m^{-3} and the average SST in the west monsoon ranged from 28.0 to 31.0°C . The distribution pattern of the average chlorophyll-a and the average SST in western monsoon in Natuna waters can be seen in Figure 5A and Figure 5B.

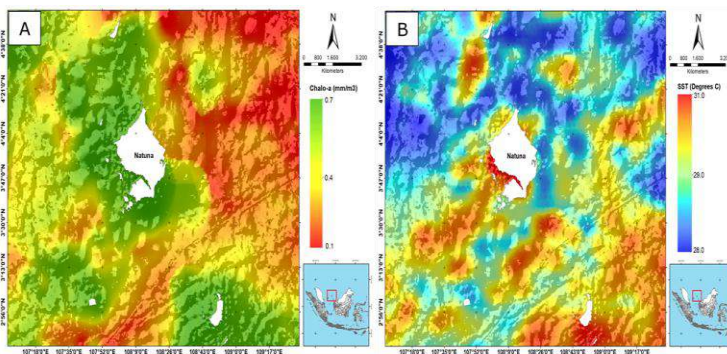


Figure 5. A. Average chlorophyll-a in the west monsoon; B. Average SST in the west monsoon in Natuna waters.

According to Figures 5A and 5B, it can be elaborated that there was an increase in chlorophyll-a reaching 0.7 mm m^{-3} in Natuna waters with an average SST range of 28.0 to 29.0°C . Comparing with the current distribution patterns in the west monsoon (Figure 4) in the Natuna waters, it can be explained that the main factor of the current direction pattern was the monsoon wind. In the west monsoon, the wind blew from the Pacific Ocean entering through the South China Sea into the Natuna waters with slower movement toward the coast due to the current collisions from the northern part and the north-western part of the Natuna Sea. This current collision resulted in an increase in chlorophyll-a and a decrease in SST in the shallow waters of the Natuna Sea.

Natuna waters depth. The water depth data analysis in Natuna waters used GEBCO (General Bathymetric Chart of the Oceans) data. The data was cropped according to the research location, then was analyzed using 2D, and then was interpolated using a kriging distribution model. Results of the analysis found the depth of the natural waters ranged from 0 to 150 m . The results of the 2D model analysis can be seen in Figure 6.

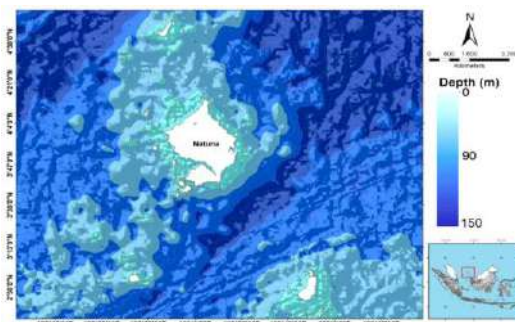


Figure 6. Natuna waters depth.

Based on the 2D model of the Natuna waters depth, it can be elaborated that in the northern part of Natuna towards the South China Sea, the depth range reached 150 m, while in the coastal part of Natuna, the depth ranged from 0 to 30 m.

Endemic species in Natuna waters. Results of the field survey (observations) conducted in Natuna waters and data collection of the species caught in the location through analysis of local market distribution found 2 endemic fish species (fish that exist only in one particular place, and not in others), namely Bombay duck fish (*Harpodon nehereus*) and Goatee croaker fish (*Dendrophysa russelli*). Images of each species can be seen in Figure 7A and Figure 7B.

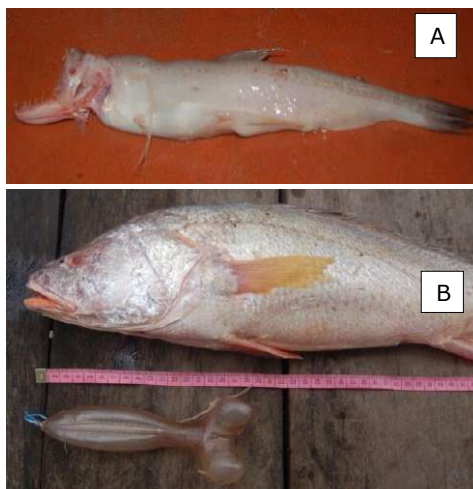


Figure 7. A: Bombay duck fish (*Harpodon nehereus*); B: Goatee croaker fish (*Dendrophysa russelli*).

Bombay duck fish (*Harpodon nehereus*). Bombay duck fish has Phylum: *Chordata*; Class: *Actinopterygii*; Order: *Aulopiformes*; Family: *Synodontidae*; Genus: *Harpodon*; Species: *H. Nehereus*; Phylum: *Chordata*; Class: *Pisces*; Order: *Myctophoide*; Family: *Scopelidae*; Genus: *Harpodon*; Species: *Neherous Harpodon*. Lomek fish has a slightly flattened elongated body shape, the tip of the snout is short and rounded, and the tail fin has 3 parts; top, bottom, and middle as a continuation of the scale line. The teeth of the two jaws have various shapes; flat arch, large arch, and small arch. The body shape is bilaterally symmetrical, compressed, while the head shape is blunt (Siddique & Aktar 2011; Jin et al 2012; Bhattacharya et al 2016; Bo et al 2013; Salim et al 2020; Rupsankar 2010).

Harpodon nehereus is a type of demersal fish, the preferred type of substrate is mud and fine sand, especially beaches close to river mouths (Kalhoroa et al 2020; Salim et al 2020; Bhattacharya et al 2016). The fish was located on the bottom of the waters with the speed of sea surface currents to breed in the range of 0.2 to 0.4 m/s with chlorophyll-a content ranging from 0.2 to 0.5 mm/m³ and an SST range ranging from 28 to 30°C in every appearance of *Harpodon nehereus* at the bottom of the waters (Siddique & Aktar 2011; Bo et al 2013).

Harpodon nehereus is a type of fish in Indonesian waters only found in the waters of Natuna and Bangka Belitung. This fish has important economic value in Natuna, Bangka Belitung, and several other coastal areas in Sumatra because it has important economic value. This fish needs to be protected and conserved in order to be sustainable.

Goatee croaker fish (*Dendrophysa russelli*). Goatee croaker fish with classification Phylum: *Chordata*; Class: *Actinopterygii*; Order: *Perciformes*; Family: *Sciaenidae*; Genus: *Dendrophysa*; Species: *D. russelli* (Cuvier, 1829). This fish has a slightly flat elongated body (vertical), covered with scales to the head. The first and second dorsal fins are fused (Figure 7B). The back edge of the front gill cover is serrated. The special feature of the Gerot fish is a small mouth but covered by very thick lips (according to one of the local names of this fish). The pectoral fins are longer and tapered than the pelvic fins. The dorsal fin has 12 spines and 13 to 15 soft fin rays. Gerot fish has a silvery gray body-color, with 4-5 longitudinal dark gray stripes that are dashed and faint on the sides of the body. Three or four of these lines are above the lateral line of the body. On the dorsal fin, there are 2 to 3 bands of brown spots. This fish can reach a size of 80 cm, but generally between 40 to 50 cm (Annisa et al 2018; Suprpto 2017; Khairul et al 2018). This fish has an important economic value, especially in its swimming bubbles. The price of this fish is increasing highly because it has swimming bubbles which are very expensive and contains high collagen. This fish exists in sea waters close to rivers with a water temperature range of 28 to 30°C.

Discussion. ~~Results~~ ~~The results~~ of the study found ~~that the an~~ average range ~~from 0.1 to 0.5 m/s~~ ~~of for the~~ current velocity ~~patterns~~ in the east and west monsoons, in Natuna Waters ~~waters~~ ~~ranged from 0.1 to 0.5 m/s~~. ~~The current pattern in~~ ~~In~~ the east monsoon, ~~the current~~ moved from the south to the north of Natuna ~~to~~ ~~(towards~~ the South China Sea). According to (Pamungkas 2018; Purba 2019; Maro et al 2021; Hartoko et al 2019; Wirasatriya et al 2020; Muskananfolo et al 2021), ~~it showed that~~ during the east monsoon, the wind moved from the continent of Asia to the continent of Australia, while in the west monsoon, the wind will move from the Australian continent to the Asian continent. The influence of the monsoon wind would also affect the Natuna Coastal waters, especially due to ~~its~~ ~~their~~ location in between the Natuna Sea, Sumatra Sea, and the Java Sea, which is the monsoon wind flow area (Setiawan & Pamungkas 2017). The research found that there was a collision of currents that had an impact on the distribution pattern of chlorophyll-a and sea surface temperature (SST) in the East monsoon in the coastal waters of Natuna. ~~Results~~ ~~The results~~ of the analysis of the average distribution of chlorophyll-a were in the range of 0.2 to 1.0 (mm/m²) and the SST ranged ~~of from~~ 28.0 to 30.0°C. ~~Research~~ ~~The previous research done by~~ (Muskananfolo et al 2021; Pamungkas 2018; Maro et al 2021; Hartoko 2010; Sukresno et al 2015; Sukresno et al 2018; Lebrec et al 2019) found that if there is a collision ~~with~~ ~~between the~~ sea surface currents in a body of water, ~~it~~ ~~the~~ chlorophyll-a will increase chlorophyll-a and ~~decreasing the SST will decrease on the sea surface~~. This is common in ~~the~~ coastal areas, ~~because of the location of~~ ~~due to the presence of numerous~~ small islands that are close to each other, thus blocking the movement of currents from deep waters to shallow waters. The ~~characteristics of these~~ waters tend to have a high level of fertility so that many organisms roam in these waters for shelter, foraging, and spawning. ~~Meanwhile~~ ~~Conversely~~, in the West monsoon (November to December), the movement ~~pattern~~ of the current ~~pattern moved in is~~ from the northern part of Natuna, ~~from~~ ~~(the~~ South China Sea) to the Natuna coastal waters. ~~Results~~ ~~The results~~ of the study found that the current movement was influenced by the west monsoon, which blew strongly from the Pacific Ocean ~~to~~ ~~wards~~ the South China Sea, then ~~to~~ ~~wards~~ the Natuna Coast, ~~to~~ the Sumatra Sea and the Java Sea. According to (Hartoko et al 2019; Maro et al 2021; Wirasatriya et al 2020; Muskananfolo et al 2021) the movement of incoming currents from the northern part of Indonesia was caused by the west monsoon wind blowing from the Pacific Ocean to the Indian Ocean, resulting in a significant increase in ~~the~~ current speed during that season.

During the West monsoon, ~~there was~~ an upwelling occurred in the Natuna coastal waters, resulting in a decrease ~~in of the~~ SST and chlorophyll-a. Mixing ~~of the~~ seawater masses ~~(by upwelling)~~ ~~in a body of water~~ could decrease ~~the~~ SST and chlorophyll-a at sea level. Waters that have upwelling characteristics are ~~indicated as~~ fertile waters, ~~in terms of~~ ~~for~~ nutrients and chlorophyll-a, ~~so which makes them attracting for that~~ many marine organisms ~~in their~~ ~~make these waters a place to~~ migration ~~e/their space to find~~ for

Commented [WU4]: Please correct the format

Commented [WU5]: Please correct the format

Formatted: Indonesian

Formatted: Indonesian

Formatted: Indonesian

Formatted: Indonesian

Formatted: Indonesian

Formatted: Indonesian

food and spawning (García-Reyes et al 2015; Chung & Gong 2019; Putra et al 2016; Wirasatriya et al 2020; Sukresno et al 2015; Putra & Mustika 2021).

~~Results of the study during the west and east monsoons found 2 types of Natuna endemic fish, during the west and east monsoons, namely *Harpodon nehereus* and *Dendrophysa russelli*, which were found in the Natuna coastal waters, with a surface current velocity patterns ranging from 0.1 to 0.5 m/s, a chlorophyll-a sea level ranging from 0.2 to 1.0 mm/m³, the an average SST ranged-ranging from 28 to 30°C, and the an average water depth of the waters ranged-ranging from 0 to 150 m. According to Siddique & Aktar 2011; Jin et al 2012; Bhattacharya et al 2016; Annisa et al 2016; Suprpto 2017, found at the location of the appearance of *Harpodon nehereus* and *Dendrophysa russelli* in coastal waters that are directly connected to the sea, where the average sea surface temperature ranging-ranged from 27 to 30°C, the sea surface currents ranged from 0.3 to 0.5 m s⁻¹, and the average depth ranged from 0 to 20 meters. Management A management of these endemic fish species needs to be done has to be implemented so that these two species can be in order to preserve their populations sustainable sustainability. Considering their 2 types of fish that have important significant economic value, the public's interest in taking them to improve the economy is even greater makink them more susceptible to be overexploited. Therefore, there is a need for sustainable management of *Harpodon nehereus* and *Dendrophysa russelli* species in Natuna waters to be sustainable.~~

Formatted: French (France)

Formatted: French (France)

Commented [WU6]: Please respect the required format.

Commented [WU7]: Please respect the required format

Field Code Changed

Commented [WU8]: Please rephrase: sustainable management..... to be sustainable

Conclusions. The research results of the oceanographic variables analysis, mainly the depth, SST, chlorophyll-a content and the monsoonal current speed range, will support for the site selection and the attempt of the endemic fish conservation. Mainly-mainly in the shallow water of the coastal areas around Natuna islands. The research represent occurred during of the east season (May to October) and the west season (November to April) 2019. Range-The of SST is-ranged from 28.0 to 31.0°C, the current speed of west and east season ranged from is 0.1 to 0.5 m/s, the chlorophyll-a content ranged from is 0.2 to 1.0 mg/m³, and the depth ranged from range is 0 to 150 m. The two identified endemic fish are *Harpodon nehereus* and *Dendrophysa russelli*.

Acknowledgements. The authors would like to thank to the Dean Faculty of Fisheries and Marine Science, Diponegoro University, Semarang, Indonesia, for the research grant. But aAlso to all other parties for their help during the field sampling and laboratory analysis.

Conflict of interest. The authors declare no conflict of interest.

References

- Afifa F. H., Hartoko A., Purnomo P. W., 2020 Changes and vulnerability of coral reef ecosystem based on field and remote sensing data on Kemujan Island, Karimunjawa Islands, Indonesia. *AAAL Bioflux* 13(2):-1016-1026
- Annisa C. A., Rahardjo M. F., Zahid A., Simanjuntak C. P. H., Asriansyah A., Aditriawan R. M., 2018 [Diet and Feeding Habits of the Javelin Grunt, Pomadasys kaakan (Cuvier, 1830) in Pabean Bay, West Java]. *Gadjah Mada University of Fisheries Journal*. 20(1):-31-40. [In Indonesian].
- Bhattacharya T., Ghorai T., Dora K. C., Sarkar S., Chowdhury S., 2016 Influence of chemical preservatives on the quality and shelf-life of dried Bombay duck (*Harpodon nehereus*). *The Asian Journal Of Animal Science*, 11(1):-1-8.
- Bo Z., Xu T., Wang R., Jin X., Sun Y., 2013 Complete mitochondrial genome of the bombay duck *Harpodon nehereus* (Aulopiformes, Synodontidae). *Mitochondria DNA. The Journal of DNA Mapping, Sequencing, and Analysis*- 24(6):-660-662.
- Chung C. C., Gong G. C., 2019 Attribution of the growth of a distinct population of synechococcus to the coverage of lateral water on an upwelling. *Terrestrial, Atmospheric and Oceanic Sciences*-Vol. 30:-575-587.

Formatted: Font: Italic

Formatted: Font: Italic

Formatted: Font: Italic

- Deliana, 2017 [Estimation of sustainable potential and utilization level of sea anemone (*Sticodactyla gigantea*) in Makassar Strait Waters]. [Thesis]. Water Resources Management Study Program, Department of Fisheries, Faculty of Marine and Fishery Sciences, Hasanuddin University, Makassar. P. 27 p. [In Indonesian].
- García-Reyes M., Sydeman W. J., Schoeman D. S., Rykaczewski R. R., Black B. A., Smit A. J., Bograd S. J., 2015 Under pressure: climate change, upwelling, and eastern boundary upwelling ecosystems. *Frontiers in Marine Science*. 2:109.
- Hartoko A., 2010 Spatial distribution of thunnus sp, vertical and horizontal sub-surface multilayer temperature profiles of in-situ agro float data in Indian Ocean. *Journal Of Coastal Development*. 14(1):61-74.
- Hartoko A., Helmi M., Sukarno M., Hariyadi, 2016 Spatial tsunami wave modelling for the South Java Coastal Area, Indonesia. *International Journal of GEOMATE*. 11(25): 2455-2460.
- Hartoko A., Febrianto A., Pamungkas A., Fachruddin I., Helmi M., Hariyadi, 2019 The myth and legend of Sadai and Gaspar Strait Bangka Belitung (Banca-Billiton) and oceanographic conditions. *International Journal of GEOMATE*. 17(62):212-218.
- Jin T., Wu Y., Wang Q., 2012 Production and characteristics of protein hydrolysates from bombay duck (*Harpodon nehereus*). *Journal of Food Processing and Preservation*. 36(1):30-37.
- Kalhoroa M. T., Yongtong M., Kalhorob M. A., Shahc S. B. H., Memond A. M., Moshine M., Dahria M. A., 2020 Resource evaluation, stock, growth and mortality of the Bombay duck (*Harpodon nehereus* Hamilton, 1822) fishery in the coastal waters of Pakistan. *Indian Journal of Geo Marine Sciences*. 49(07):1222-1228.
- Khairul, Mawardi W., Riyanto M., 2018 [Use of blue light emitting diode (Led) lamps on floating chart catches in Aceh Jaya District]. *Albacore Marine Fisheries Research Journal*. 1(2):235-243. [In Indonesian].
- Kusumaningtyas M. A., Bramawanto R., Daulat A., Pranowo W. S., 2014 [The water quality of Natuna coastal water during transitional season]. *DEPIK Journal of Science - Aquatic, Coastal and Fishery Sciences*. 3(1):10-20. [In Indonesian].
- Lebrec M., Stefanski S., Gates R., Acar S., Golbuu Y., Claudel-Rusin A., Kurihara H., Rehdanz K., Paugam-Baudoin D., Tsunoda T., Swarzenski P. W., 2019 Ocean acidification impacts in select Pacific Basin coral reef ecosystems. *Regional Studies in Marine Science*. 28:1-8.
- Maro J. F., Hartoko A., Anggoro S., Muskananfolo M. R., Nugraha E., 2021 Sea surface temperature and chlorophyll-a concentrations from MODIS satellite data and presence of cetaceans in Savu, Indonesia. *AAFL Bioflux* 14(3):1190-1200.
- Muskananfolo M. R., Jumsar, Wirasatriya A., 2021 Spatio-temporal distribution of chlorophyll-a concentration, sea surface temperature and wind speed using aqua-modis satellite imagery over the Savu Sea, Indonesia. *Remote Sensing Applications: Society and Environment*. 22:1-11.
- Nababan B., Hadiani S., Natih N. M. N., 2015 [Dynamic of sea level anomaly of Indonesian waters]. *Journal of Tropical Marine Science and Technology*. 7(1):259-272. [In Indonesian].
- Nababan B., Simamora K., 2012 [Variability of chlorophyll-a concentration and sea surface temperature of Natuna Waters]. *Journal of Tropical Marine Science and Technology*. 4(1):121-134. [In Indonesian].
- Pamungkas A., 2018 [Characteristics of oceanographic parameters (tidals, currents, and waves) in the north and south waters of Bangka Island]. *Marina Oceanography Bulletin*. 7(1):51-58. [In Indonesian].
- Purba N. P., Pranowo W. S., Simanjuntak S. M., Faizal I., Jasmin H. H., Handyman D. I. W., Mulyani P. G., 2019 [Trajectory of microplastics at Savu Sea Marine National Park, East Nusa Tenggara]. *DEPIK. Journal of Aquatic, Coastal and Fishery Sciences*, 8(2):125-134. [In Indonesian].
- Putra M. I. H., Lewis S. A., Kurniasih E. M., Prabuning D., Faiqoh E., 2016 Plankton biomass models based on GIS and remote sensing technique for predicting marine megafauna hotspots in the Solor Waters. *IOP Conference Series: Earth and Environmental Science*. 47:1-19.

Commented [WU9]: What type of thesis? Msc?PhD?

Formatted: Font: Italic

Formatted: Font: Italic

Formatted: Font: Italic

Commented [WU10]: Pages?

- Putra M. I. H., Mustika P. L. K., 2021 Maximum entropy model: Estimating the relative suitability of cetacean habitat in the Northern Savu Sea, Indonesia. *Marine Mammal Science* 37(1):6–28.
- Rupsankar C., 2010 Improvement of cooking quality and gel formation capacity of bombay duck (*Harpodon nehereus*) fish meat. *Journal of Food Science and Technology* 47(5):534–540.
- Salim G., Handayani K. R., Anggoro S., Indarjo A., Syakti A. D., Ibrahim A. J., Ransangan J., Prakoso L. Y., 2020 Morphometric analysis of *Harpodon nehereus*, *Harpiosquilla raphidea*, and *Scylla serrata* in the coastal waters of Tarakan, North Kalimantan, Indonesia. *Biodiversitas* 21(10):4829-4838.
- Setyawan W. B., Pamungkas A., 2017 [Comparison of oceanographic characteristics of the north and south coasts of Java Island: Tides, currents, and waves]. *Proceedings Proceedings of the 2017 National Marine and Fisheries Seminar III*. Trunojoyo University, Madura, pp. 191–202. [In Indonesian].
- Siddique M. A. M., Aktar M., 2011 Changes of nutritional value of three marine dry fishes (*Johanni dussumieri*, *Harpodon nehereus* and *Lepturacanthus savala*) during Storage. *Food and Nutrition Sciences* 02(10):1082-1087.
- Sukresno B., Hanintyo R., Kusuma D. W., Jatisworo D., Murdimanto A., 2018 Three-way error analysis of sea surface temperature (SST) between Himawari-8, Buoy, and Mur SST In Savu Sea. *International Journal of Remote Sensing and Earth Sciences (IJReSES)* 15(1):25-36.
- Sukresno B., Hartoko A., Sulisty B., Subiyanto, 2015 Empirical cumulative distribution function (ECDF) analysis of *Thunnus* sp. using ARGO float sub-surface multilayer temperature data in Indian Ocean South of Java. *International Conference on Tropical and Coastal Region Eco-Development 2014 (ICTRED 2014)*. *Procedia Environmental Sciences* 23:358–367.
- Suprpto S., 2017 Demersal fish biodiversity index in Arafura Waters. *Indonesian Journal of Fisheries Research* 14(3):321-335. [In Indonesian].
- Wirasatriya A., Setiawan J. D., Sugianto D. N., Rosyadi I. A., Haryadi, Winarso G., Setiawan R. Y., Susanto R. D., 2020 Ekman dynamics variability along the southern coast of Java revealed by satellite data. *International Journal of Remote Sensing* 41(21):8475–8496.
- Wyrtki K., 1961 Physical oceanography of the Southeast Asian waters. In: *Scientific results of maritime investigations of the South China Sea and Gulf of Thailand 1959–1961*. Naga Report 2. University of California/Scripps Institute of Oceanography, California, P.195 p.

Formatted: Font: Italic

Formatted: Font: Italic

Formatted: Font: Italic

Formatted: Font: Italic

Formatted: Font: Italic

Formatted: Font: Italic

Commented [WU11]: Where is it cuted in the text?

Formatted: Font: Italic

Formatted: Font: Italic

Formatted: Font: Italic

Formatted: Font: Italic

Received: 2021. Accepted: 2021. Published online: 2021.

Authors:

Hariyadi, Faculty of Fisheries and Marine Science, Marine Science Doctoral Programe, Diponegoro University, Prof. Sudarto Street, Semarang 50275, Central Java, Indonesia, e-mail: hargeoku@gmail.com

Johannes Hutabarat, Faculty of Fisheries and Marine Science, Diponegoro University, Prof. Sudarto Street, Semarang 50275, Central Java, Indonesia, e-mail: johannesfpik@gmail.com

Denny Nugroho Sugianto, Faculty of Fisheries and Marine Science, Diponegoro University, Prof. Sudarto Street, Semarang 50275, Central Java, Indonesia, e-mail: dennysugianto@yahoo.com

Agus Hartoko, Faculty of Fisheries and Marine Science, Diponegoro University, Prof. Sudarto Street, Semarang 50275, Central Java, Indonesia, e-mail: agushartoko.undip@gmail.com

Jahved Ferianto Maro, Faculty of Fisheries and Marine Science, Diponegoro University, Prof. Sudarto Street, Semarang 50275, Central Java, Indonesia, e-mail: yantogisuntrib@gmail.com

Erick Nugraha, Faculty of Fishing Technology, Jakarta Technical University of Fisheries, Jakarta, Indonesia, AUP Street, Pasarminggu 12520, South Jakarta, Indonesia, e-mail: nugraha_eriq1@yahoo.co.id

This is an open-access article distributed under the terms of the Creative Commons Attribution License, which permits unrestricted use, distribution and reproduction in any medium, provided the original author and source are credited.

How to cite this article:

Hariyadi, Hutabarat J., Sugianto D. N., Hartoko A., Maro J. F., Nugraha E., 2021 Analysis of specific shallow water current for endemic fish conservation at Natuna Islands, Indonesia. *AAFL Bioflux*

Tulis

Yahoo 10 rb

nugrahaeriq.en... 9.7 rb

Email Masuk 10 rb

Belum Dibaca

Berbintang

Draft 120

Terakhir

Arsip

Spam

Sampah

Lebih sedikit

Tampilan Sembunyikan

Foto

Dokumen

Langganan

Folder Sembunyikan

+ Folder Baru

Kembali

Atsipkan Pindahkan Hapus Spam

erick nugraha <nugraha_eriq1@yahoo.co.id> Kepada: Eni Kovacs Sab, 3 Jul 2021 jam 19:37

Dear dr. Eni,
I send you edited manuscript.
thank you.

Tampilkan pesan asli

Nugraha_N... .doc 16.5 MB

Eni Kovacs ...current for endemic fish conservation at Natuna... Rab, 7 Jul 2021 jam 00:34

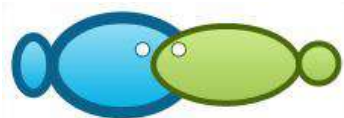
erick nugraha <nugraha_eriq1@yahoo.co.id> Kepada: Eni Kovacs Rab, 7 Jul 2021 jam 09:50

Dear Dr. Eni
I send you revised manuscript journal and acceptance for publishing letter.

Receive 15% Off Your Order

AJE

Get a discount on your order by entering EXTRA15. Applies to English Editing and more.



Analysis of specific shallow water current for endemic fish conservation at Natuna Islands, Indonesia

¹Hariyadi, ²Johannes Hutabarat, ²Denny N. Sugianto, ²Agus Hartoko, ²Jahved F. Maro, ³Erick Nugraha

¹ Faculty Fisheries and Marine Science, Marine Science Doctoral Programme, Diponegoro University, Semarang, Indonesia; ² Faculty of Fisheries and Marine Science, Diponegoro University, Semarang, Indonesia; ³ Faculty of Fishing Technology, Jakarta Technical University of Fisheries, South Jakarta, Indonesia; Corresponding author: E. Nugraha, nugraha_eriq1@yahoo.co.id

Abstract. The research is aimed to built the shallow water current spatial model and to analyse the seasonal sea surface temperature (SST), chlorophyll-a, bathymetry, and identify endemic fish in the Natuna islands seas. The research represent of east season (May to October) and west season (November to April) 2019. Range of SST is 28.0 to 31.0°C, current speed of west and east season is 0.1 to 0.5 m s⁻¹, chlorophyll-a content is 0.2 to 1.0 mg m⁻³, depth range is 0 to 150 m. Two endemic fish are Bombay duck fish (*Harpodon nehereus*) and goatee croaker fish (*Dendrophysa russelli*).

Key Words: monsoons, Sea surface temperature, chlorophyll-a, Bombay duck fish, goatee croaker fish.

Introduction. Characteristics of Natuna Waters are influenced by seasons. According to Wyrтки 1961, Hartoko et al 2019, Nababan & Simamora 2012, and Deliama 2017, seasons in Indonesia are divided into northwest monsoons (west monsoons), southeast monsoons (east monsoons), and transitional monsoons or transitions between the two. At the time of transition, the wind direction is irregular, and it often rains suddenly. In coastal areas, the characteristics of the waters are also influenced by tides and input from the mainland. The waters of the southwest part of Natuna receive material input from rivers and anthropogenic activities. Several rivers flow into these waters, one of which is the Binjai River, the largest river in the region (Kusumaningtyas et al 2014; Nababan et al 2015). Natuna Sea borders with the South China Sea and countries in the ASEAN region; Vietnam, Cambodia, Singapore, Thailand, and Malaysia, so it is very strategic as one of the important international shipping lanes. The Natuna Sea is also a place for the mass exchange of water from the Indonesian Ocean to the South China Sea, which has a close interaction with the Monsoon that occurs in Indonesia, so it is necessary to know thoroughly about the characteristics of the water resources (Wyrтки 1961; Nababan & Simamora 2012).

Natuna Sea has high biodiversity because of its location directly opposite the South China Sea and the high seas, so there are many endemic species in the waters, including Bombay duck fish (*Harpodon nehereus*) and Goatee croaker fish (*Dendrophysa russellii*). With the existence of endemic species in Natuna Sea, it is necessary to conduct specific research in terms of oceanography, especially the surface current patterns, so that they can be the initial data in managing and conserving these species. Currents greatly affect the distribution pattern of chlorophyll-a and sea surface temperature as important oceanographic variables for pelagic fish in Natuna Sea.

The remote sensing technology approach is very important in mapping the current velocity distribution pattern in Natuna Sea with an analysis model using the MIKE 21 Current Model. Current data was carried out by modeling currents between bathymetry

data and tidal data to obtain a model of marine distribution patterns in waters shallow, especially in Natuna Sea. This research was initial research in managing and conserving endemic species in Natuna Sea.

Material and Method

Description of the study site. The research was conducted in Natuna Sea, Natuna in 2019 consisting of representing the eastern monsoon (May to October) and the West monsoon (November to April). The map of the research location can be seen in Figure 1.

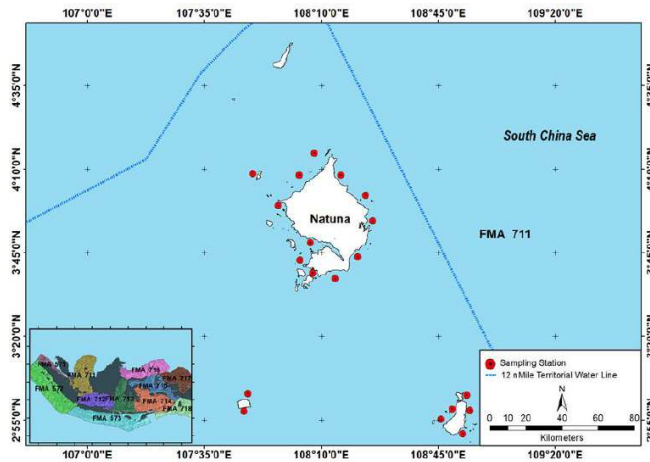


Figure 1. Station points of the field survey.

Data collection. This research was conducted using field observation methods to identify endemic species in Natuna Sea, measuring field current patterns, and modeling current patterns and current velocity using Flow Model FM Mike 21. Satellite data processing was using Aqua Modis Level 3 with Chlorophyll-a data product, sea surface temperature (SST) and water depth using GEBCO (General Bathymetric Chart of the Oceans) data, then extracting data using the ArcGIS 10.8 application and then interpolating using the Kriging method referring to (Maro et al 2021; Hartoko 2010; Hartoko et al 2016; Afifa et al 2020; Wirasatriya et al 2020; Muskananfolia et al 2021).

Data analysis. Flow Model FM MIKE 21 Flow Model FM Hydrodynamic Module was used to simulate tidal and flow patterns. This module was based on the numerical solution of the two-dimensional water equation. The builder equations in this hydrodynamics module consisted of continuity and momentum equations to simulate current patterns, including: The continuity equation for the two-dimensional flow average depth (average continuity equation), which can be written as (Garcia-Reyes et al 2015; Hartoko et al 2016):

$$\frac{\partial \zeta}{\partial t} + \frac{\partial p}{\partial x} + \frac{\partial q}{\partial y} = 0$$

Momentum equation for flow in the x-axis direction.

$$\frac{\partial p}{\partial t} + \frac{\partial}{\partial x} \left(\frac{p^2}{H} \right) + \frac{\partial}{\partial y} \left(\frac{pq}{H} \right) + gH \frac{\partial \zeta}{\partial x} + \frac{gp\sqrt{p^2+q^2}}{c^2 H^2} - \frac{1}{\rho_w} \left[\frac{\partial}{\partial x} (H\tau_{xx}) + \frac{\partial}{\partial y} (H\tau_{xy}) \right] - \Omega p - fVV_x + \frac{h}{\rho_w} \frac{\partial}{\partial x} (p_a) = 0$$

Momentum equation for flow in the y-direction.

$$\frac{\partial q}{\partial t} + \frac{\partial}{\partial y} \left(\frac{q^2}{H} \right) + \frac{\partial}{\partial x} \left(\frac{pq}{H} \right) + gH \frac{\partial \zeta}{\partial y} + \frac{gq\sqrt{p^2+q^2}}{C^2 H^2} - \frac{1}{\rho w} \left[\frac{\partial}{\partial y} (H\tau_{yy}) + \frac{\partial}{\partial x} (H\tau_{xy}) \right] - \Omega p - fVWy + \frac{h}{\rho w} \frac{\partial}{\partial y} (p_a) = 0$$

Notes:

- x,y : Coordinate space functions
- h : Water depth
- ζ : Sea level elevation
- p,q (x, y, f) : Density level
- g : Gravitational acceleration
- ρ : Water density
- V_x, V_y, V_t : Wind speed on the x and y axes.
- $\tau_{bx} \tau_{by}$: Base shear stress
- $\tau_{sx} \tau_{sy}$: Surface shear stress
- $\tau_{xx}, \tau_{xy}, \tau_{yx}, \tau_{yy}$: Turbulent shear stress
- ω : Coriolis parameter
- ρ_w : Seawater density
- fV : Wind friction factor

Results and Discussion

Distribution pattern of currents, chlorophyll-a and sea surface temperature in the east monsoon (May to October). The current pattern in the east monsoon in May to October 2019 showed the dominant direction of arrival from the south to the north. Based on the difference in color gradients, it can be seen that the velocity of large currents occurred in some parts of the narrow waters flanked by two islands with a speed of 0.1 m s^{-1} to 0.5 m s^{-1} . The map of the current distribution pattern can be seen in Figure 2.

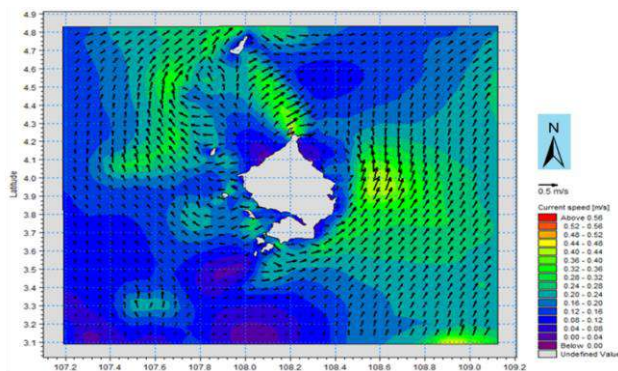


Figure 2. Distribution pattern of east monsoon currents in Natuna shallow coastal waters.

The water current in the shallow coastal waters of Natuna was the Ekman current. It has a regular current pattern. The main generator of currents in these waters was the east monsoon that moved from the waters of Java and Sumatra, where the movement of this current entered from the south of the Natuna Sea which moved into the north and northeast of the Natuna waters. This can be caused by the influence of the east monsoon wind that moved from the Indian Ocean waters to the Pacific Ocean waters. The surface

current pattern in Natuna waters (Figure 2) showed a very different current direction in the east monsoon (May to October 2019). This current movement also had an impact on the distribution pattern of chlorophyll-a and sea surface temperature (SST) in the east monsoon in the coastal waters of Natuna, with the chlorophyll-a distribution ranging from 0.2 to 1.0 mm^{-3} and the SST ranging from 28.0 to 30.0°C. The distribution of chlorophyll-a and east monsoon SST can be seen in Figure 3A and Figure 3B.

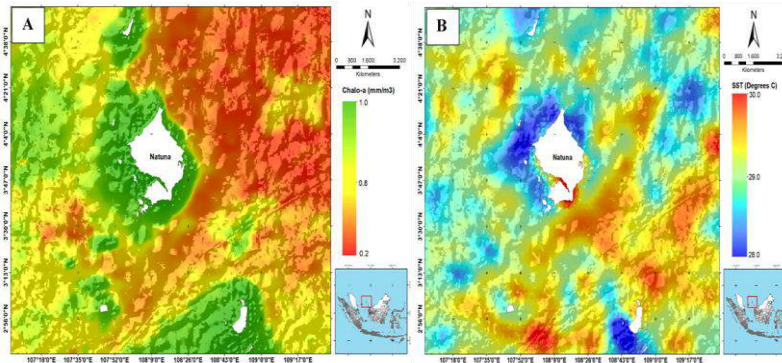


Figure 3. A: Average Chlorophyll-a distribution of East Monsoon; B: Average SST distribution of East Monsoon.

According to the average distribution of chlorophyll-a and SST range in the east monsoon in Natuna waters, it can be elaborated that there was an increase in chlorophyll-a in each coastal area reached 8.0 to 1.0 mm^{-3} with an average SST range of 28.0 to 30.0°C. In the SST range between 28.0 to 29.0°C in the coastal area of Natuna, there was an increase in chlorophyll-a reaching 0.8 to 1.0 mm^{-3} . Comparing the increase in chlorophyll-a and SST to the current distribution pattern in the east monsoon (Figure 2) in Natuna waters, it can be shown that there was a confluence of currents in the coastal area which resulting in a water mass mixing that would increase nutrients and chlorophyll-a in the waters. This tendency would result in a decrease in sea surface temperature in Natuna waters.

Distribution pattern of currents, chlorophyll-a and sea surface temperature in the west monsoon (November-April). Research on the distribution pattern of currents, average chlorophyll-a, and average sea surface temperature in the west monsoon in November to December 2019 in Natuna Waters using the MIKE 21 current distribution pattern model and Aqua Modis level 3 data, found the current distribution patterns in Natuna waters ranged from 0.1 m s^{-1} to 0.5 m s^{-1} in 2019. The current pattern distribution in the west monsoon can be seen in Figure 4.

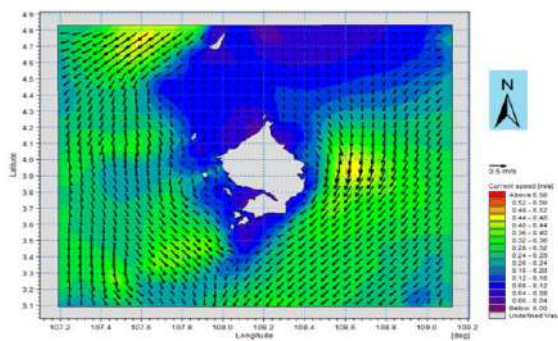


Figure 4. Current distribution patterns of West Monsoon in Natuna Sea.

Based on Figure 4 regarding the current distribution pattern in the West monsoon of the Natuna Sea, the direction and pattern of inflow were from the South China Sea, the northern part of Natuna. It was when on the West monsoon when the west wind from the Pacific Ocean that entered Indonesian waters through the South China Sea was high enough that increasing current speed of up to 0.5 m s^{-1} , with a current color degradation pattern showing high clusters in the shallow waters of the Natuna Sea.

The average chlorophyll-a in the west monsoon ranged from 0.1 to 0.7 mm m^{-3} and the average SST in the west monsoon ranged from 28.0 to 31.0°C . The distribution pattern of the average chlorophyll-a and the average SST in western monsoon in Natuna waters can be seen in Figure 5A and Figure 5B.

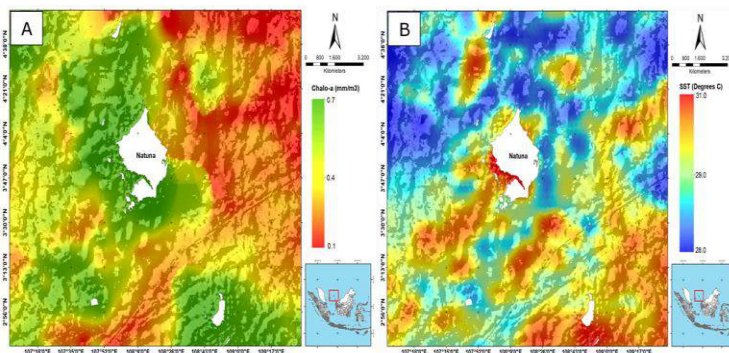


Figure 5. A. Average chlorophyll-a in the west monsoon; B. Average SST in the west monsoon in Natuna waters.

According to Figures 5A and 5B, it can be elaborated that there was an increase in chlorophyll-a reaching 0.7 mm m^{-3} in Natuna waters with an average SST range of 28.0 to 29.0°C . Comparing with the current distribution patterns in the west monsoon (Figure 4) in the Natuna waters, it can be explained that the main factor of the current direction pattern was the monsoon wind. In the west monsoon, the wind blew from the Pacific Ocean entering through the South China Sea into the Natuna waters with slower movement toward the coast due to the current collisions from the northern part and the north-western part of the Natuna Sea. This current collision resulted in an increase in chlorophyll-a and a decrease in SST in the shallow waters of the Natuna Sea.

Natuna waters depth. The water depth data analysis in Natuna waters used GEBCO (General Bathymetric Chart of the Oceans) data. The data was cropped according to the research location, then was analyzed using 2D, and then was interpolated using a kriging distribution model. Results of the analysis found the depth of the natural waters ranged from 0 to 150 m . The results of the 2D model analysis can be seen in Figure 6.

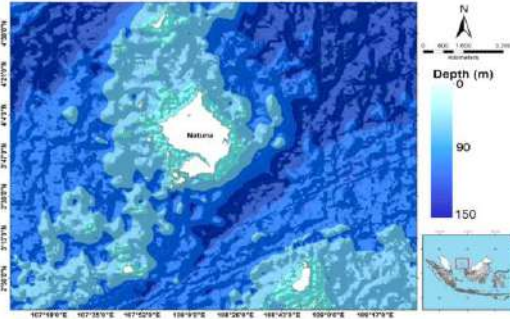


Figure 6. Natuna waters depth.

Based on the 2D model of the Natuna waters depth, it can be elaborated that in the northern part of Natuna towards the South China Sea, the depth range reached 150 m, while in the coastal part of Natuna, the depth ranged from 0 to 30 m.

Endemic species in Natuna waters. Results of the field survey (observations) conducted in Natuna waters and data collection of the species caught in the location through analysis of local market distribution found two endemic fish species (fish that exist only in one particular place, and not in others), namely Bombay duck fish (*Harpodon nehereus*) and Goatee croaker fish (*Dendrophysa russelli*). Images of each species can be seen in Figure 7A and Figure 7B.

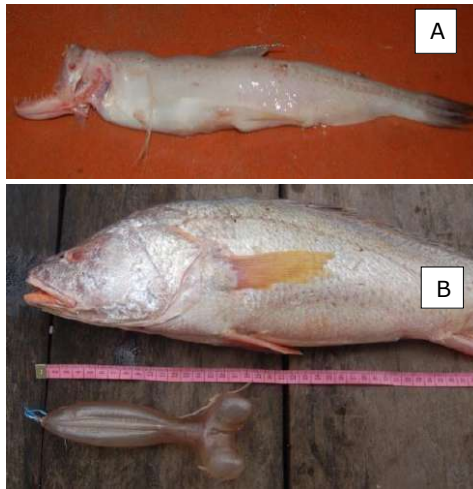


Figure 7. A: Bombay duck fish (*Harpodon nehereus*); B: Goatee croaker fish (*Dendrophysa russelli*).

Bombay duck fish (*Harpodon nehereus*). Bombay duck fish has Phylum: *Chordata*; Class: *Actinopterygii*; Order: *Aulopiformes*; Family: *Synodontidae*; Genus: *Harpodon*; Species: *H. Nehereus*; Phylum: *Chordata*; Class: *Pisces*; Order: *Myctophoide*; Family: *Scopelidae*; Genus: *Harpodon*; Species: *Harpodon neherous*. *Harpodon* has a slightly flattened elongated body shape, the tip of the snout is short and rounded, and the tail fin has 3 parts; top, bottom, and middle as a continuation of the scale line. The teeth of the two jaws have various shapes; flat arch, large arch, and small arch. The body shape is bilaterally symmetrical, compressed, while the head shape is blunt (Siddique & Aktar

2011; Jin et al 2012; Bhattacharya et al 2016; Bo et al 2013; Salim et al 2020; Rupsankar 2010).

Harpodon nehereus is a type of demersal fish, the preferred type of substrate is mud and fine sand, especially beaches close to river mouths (Kalhoroa et al 2020; Salim et al 2020; Bhattacharya et al 2016). The fish was located on the bottom of the waters with the speed of sea surface currents to breed in the range of 0.2 to 0.4 m/s with chlorophyll-a content ranging from 0.2 to 0.5 mm/m³ and an SST range ranging from 28 to 30°C in every appearance of *Harpodon nehereus* at the bottom of the waters (Siddique & Aktar 2011; Bo et al 2013).

Harpodon nehereus is a type of fish in Indonesian waters only found in the waters of Natuna and Bangka Belitung. This fish has important economic value in Natuna, Bangka Belitung, and several other coastal areas in Sumatera because it has important economic value. This fish needs to be protected and conserved in order to be sustainable.

Goatee croaker fish (*Dendrophysa russelli*). Goatee croaker fish with classification Phylum: *Chordata*; Class: *Actinopterygii*; Order: *Perciformes*; Family: *Sciaenidae*; Genus: *Dendrophysa*; Species: *D. russelii* (Cuvier, 1829). This fish has a slightly flat elongated body (vertical), covered with scales to the head. The first and second dorsal fins are fused (Figure 7B). The back edge of the front gill cover is serrated. The special feature of the Gerot fish is a small mouth but covered by very thick lips (according to one of the local names of this fish). The pectoral fins are longer and tapered than the pelvic fins. The dorsal fin has 12 spines and 13 to 15 soft fin rays. Gerot fish has a silvery gray body-color, with 4-5 longitudinal dark gray stripes that are dashed and faint on the sides of the body. Three or four of these lines are above the lateral line of the body. On the dorsal fin, there are 2 to 3 bands of brown spots. This fish can reach a size of 80 cm, but generally between 40 to 50 cm (Annisa et al 2018; Suprpto 2017; Khairul et al 2018). This fish has an important economic value, especially in its swimming bubbles. The price of this fish is increasing highly because it has swimming bubbles which are very expensive and contains high collagen. This fish exists in sea waters close to rivers with a water temperature range of 28 to 30°C.

Discussion. The results of the study found an average range from 0.1 to 0.5 m s for the current velocity in the east and west monsoons, in Natuna waters. In the east monsoon, the current moved from the south to the north of Natuna (towards the South China Sea). According to (Pamungkas 2018; Purba 2019; Maro et al 2021; Hartoko et al 2019; Wirasatriya et al 2020; Muskananfolo et al 2021), during the east monsoon, the wind moved from the continent of Asia to the continent of Australia, while in the west monsoon, the wind will move from the Australian continent to the Asian continent. The influence of the monsoon wind would also affect the Natuna Coastal waters, especially due to their location in between the Natuna Sea, Sumatra Sea and the Java Sea, which is the monsoon wind flow area (Setyawan & Pamungkas 2017). The research found that there was a collision of currents that had an impact on the distribution pattern of chlorophyll-a and sea surface temperature (SST) in the East monsoon in the coastal waters of Natuna. The results of the analysis of the average distribution of chlorophyll-a were in the range of 0.2 to 1.0 mm m² and the SST ranged from 28.0 to 30.0°C. The previous research (Muskananfolo et al 2021; Pamungkas 2018; Maro et al 2021; Hartoko 2010; Sukresno et al 2015; Sukresno et al 2018; Lebrec et al 2019) found that if there is a collision between the sea surface currents in a body of water, the chlorophyll-a will increase and the SST will decrease. This is common in the coastal areas, due to the presence of numerous small islands that are close to each other, thus blocking the movement of currents from deep waters to shallow waters. The se waters tend to have a high level of fertility so that many organisms roam in these waters for shelter, foraging and spawning. Conversely, in the West monsoon (November to December), the movement pattern of the current is from the northern part of Natuna (the South China Sea) to the Natuna coastal waters. The results of the study found that the current movement was influenced by the west monsoon, which blew strongly from the Pacific Ocean towards the South China Sea, then towards the Natuna Coast, the Sumatra Sea

Commented [WU1]: Please correct the format

Commented [A2R1]: Corrected. tq

Commented [WU3]: Please correct the format

Commented [A4R3]: Corrected thank you

and the Java Sea. According to (Hartoko et al 2019; Maro et al 2021; Wirasatriya et al 2020; Muskananfolo et al 2021) the movement of incoming currents from the northern part of Indonesia was caused by the west monsoon wind blowing from the Pacific Ocean to the Indian Ocean, resulting in a significant increase in the current speed during that season.

During the West monsoon, an upwelling occurred in the Natuna coastal waters, resulting in a decrease of the SST and chlorophyll-a. Mixing the seawater masses (by upwelling) could decrease the SST and chlorophyll-a at sea level. Waters that have upwelling characteristics are fertile, in terms of nutrients and chlorophyll-a, which makes them attracting for many marine organisms in their migration for food and spawning (García-Reyes et al 2015; Chung & Gong 2019; Putra et al 2016; Wirasatriya et al 2020; Sukresno et al 2015; Putra & Mustika 2021).

The study found 2 types of endemic fish, during the west and east monsoons, namely *Harpodon nehereus* and *Dendrophysa russelli*, which were found in the Natuna coastal waters, with a surface current velocity ranging from 0.1 to 0.5 m/s, a chlorophyll-a sea level ranging from 0.2 to 1.0 mg m⁻³, an average SST ranging from 28 to 30°C, and an average water depth ranging from 0 to 150 m. According to Siddique & Aktar 2011; Jin et al 2012; Bhattacharya et al 2016; Annisa et al 2016; Suprpto 2017, at the location of the appearance of *Harpodon nehereus* and *Dendrophysa russelli* in coastal waters, the average sea surface temperature ranged from 27 to 30°C, the sea surface currents ranged from 0.3 to 0.5 m s⁻¹ and the average depth ranged from 0 to 20 meters. A management of these endemic fish species has to be implemented in order to preserve their populations sustainability, considering their significant economic value, makink them more susceptible to be overexploited. ~~Therefore, there is a need for sustainable management of *Harpodon nehereus* and *Dendrophysa russelli* species in Natuna waters to be sustainable.~~ Therefore, it is necessary to manage the species *Harpodon nehereus* and *Dendrophysa russelli* in Natuna waters in order to remain sustainable.

Conclusions. The research results of the oceanographic variables analysis, mainly the depth, SST, chlorophyll-a content and monsoonal current speed, will support the site selection and the attempt of endemic fish conservation, mainly in the shallow water of the coastal areas around Natuna islands. The research occurred during the east season (May to October) and the west season (November to April) 2019. The SST ranged from 28.0 to 31.0°C, the current speed of west and east season ranged from 0.1 to 0.5 m/s, the chlorophyll-a content ranged from 0.2 to 1.0 mg m⁻³ and the depth ranged from 0 to 150 m. The two identified endemic fish are *Harpodon nehereus* and *Dendrophysa russelli*.

Acknowledgements. The authors would like to thank to the Dean Faculty of Fisheries and Marine Science, Diponegoro University, Semarang, Indonesia, for the research grant, But also to all other parties for their help during the field sampling and laboratory analysis.

Conflict of interest. The authors declare no conflict of interest.

References

- Afifa F. H., Hartoko A., Purnomo P. W., 2020 Changes and vulnerability of coral reef ecosystem based on field and remote sensing data on Kemujan Island, Karimunjawa Islands, Indonesia. *AACL Bioflux* 13(2):1016-1026.
- Annisa C. A., Rahardjo M. F., Zahid A., Simanjuntak C. P. H., Asriansyah A., Aditriawan R. M., 2018 [Diet and Feeding Habits of the Javelin Grunt, *Pomadasys kaakan* (Cuvier, 1830) in Pabean Bay, West Java]. *Gadjah Mada University of Fisheries Journal*. 20(1):31-40. [In Indonesian].
- Bhattacharya T., Ghorai T., Dora K. C., Sarkar S., Chowdhury S., 2016 Influence of chemical preservatives on the quality and shelf-life of dried Bombay duck (*Harpodon nehereus*). *The Asian Journal Of Animal Science* 11(1):1-8.

Commented [WU5]: Please respect the required format.

Commented [A6R5]: ok

Commented [WU7]: Please respect the required format

Commented [A8R7]: ok

Formatted: Strikethrough

Commented [WU9]: Please rephrase: sustainable management..... to be sustainable

Formatted: Strikethrough

Formatted: Font: Italic

Formatted: Font: Italic

- Bo Z., Xu T., Wang R., Jin X., Sun Y., 2013 Complete mitochondrial genome of the bombay duck *Harpodon nehereus* (Aulopiformes, Synodontidae). Mitochondria DNA. The Journal of DNA Mapping, Sequencing, and Analysis 24(6):660-662.
- Chung C. C., Gong G. C., 2019 Attribution of the growth of a distinct population of synechococcus to the coverage of lateral water on an upwelling. Terrestrial, Atmospheric and Oceanic Sciences 30:575-587.
- Deliana, 2017 [Estimation of sustainable potential and utilization level of sea anemone (*Sticodactyla gigantea*) in Makassar Strait Waters]. M.Sc [Thesis]. Water Resources Management Study Program, Department of Fisheries, Faculty of Marine and Fishery Sciences, Hasanuddin University, Makassar, 27 p. [In Indonesian].
- Garcia-Reyes M., Sydeman W. J., Schoeman D. S., Rykaczewski R. R., Black B. A., Smit A. J., Bograd S. J., 2015 Under pressure: Climate change, upwelling, and eastern boundary upwelling ecosystems. Frontiers in Marine Science 2(109)1-10.
- Hartoko A., 2010 Spatial distribution of thunnus sp, vertical and horizontal sub-surface multilayer temperature profiles of in-situ agro float data in Indian Ocean. Journal Of Coastal Development 14(1):61-74.
- Hartoko A., Helmi M., Sukarno M., Hariyadi, 2016 Spatial Tsunami Wave Modelling For The South Java Coastal Area, Indonesia. International Journal of GEOMATE 11(25):2455-2460.
- Hartoko A., Febrianto A., Pamungkas A., Fachrudin I., Helmi M., Hariyadi, 2019 The myth and legend of Sadai and Gaspar Strait Bangka Belitung (Banca-Billiton) and oceanographic conditions. International Journal of GEOMATE 17(62):212-218.
- Jin T., Wu Y., Wang Q., 2012 Production and characteristics of protein hydrolysates from bombay duck (*Harpodon nehereus*). Journal of Food Processing and Preservation 36(1):30-37.
- Kalhoroa M. T., Yongtong M., Kalhorob M. A., Shahc S. B. H., Memond A. M., Moshine M., Dahria M. A., 2020 Resource evaluation, stock, growth and mortality of the Bombay duck (*Harpodon nehereus* Hamilton, 1822) fishery in the coastal waters of Pakistan. Indian Journal of Geo Marine Sciences 49(7):1222-1228.
- Khairul, Mawardi W., Riyanto M., 2018 [Use of blue light emitting diode (Led) lamps on floating chart catches in Aceh Jaya District]. Albacore Marine Fisheries Research Journal 1(2):235-243. [In Indonesian].
- Kusumaningtyas M. A., Bramawanto R., Daulat A., Pranowo W. S., 2014 [The water quality of Natuna coastal water during transitional season]. DEPIK Journal of Science - Aquatic, Coastal and Fishery Sciences 3(1):10-20. [In Indonesian].
- Lebrec M., Stefanski S., Gates R., Acar S., Golbuu Y., Claudel-Rusin A., Kurihara H., Rehdanz K., Paugam-Baudoin D., Tsunoda T., Swarzenski P. W., 2019 Ocean acidification impacts in select Pacific Basin coral reef ecosystems. Regional Studies in Marine Science 28:1-8.
- Maro J. F., Hartoko A., Anggoro S., Muskananfola M. R., Nugraha E., 2021 Sea surface temperature and chlorophyll-a concentrations from MODIS satellite data and presence of cetaceans in Savu, Indonesia. AACL Bioflux 14(3):1190-1200.
- Muskananfola M. R., Jumsar, Wirasatriya A., 2021 Spatio-temporal distribution of chlorophyll-a concentration, sea surface temperature and wind speed using aqua-modis satellite imagery over the Savu Sea, Indonesia. Remote Sensing Applications: Society and Environment 22:1-9.
- Nababan B., Hadianti S., Natih N. M. N., 2015 [Dynamic of sea level anomaly of Indonesian waters]. Journal of Tropical Marine Science and Technology 7(1):259-272. [In Indonesian].
- Nababan B., Simamora K., 2012 [Variability of chlorophyll-a concentration and sea surface temperature of Natuna Waters]. Journal of Tropical Marine Science and Technology 4(1):121-134. [In Indonesian].
- Pamungkas A., 2018 [Characteristics of oceanographic parameters (tidals, currents, and waves) in the north and south waters of Bangka Island]. Marina Oceanography Bulletin 7(1):51-58. [In Indonesian].
- Purba N. P., Pranowo W. S., Simanjuntak S. M., Faizal I., Jasmin H. H., Handyman D. I. W., Mulyani P. G., 2019 [Trajectory of microplastics at Savu Sea Marine National

Commented [WU10]: What type of thesis? Msc?PhD?

Commented [A11R10]: M.Sc

Formatted: Font: Italic

- Park, East Nusa Tenggara]. DEPIK. Journal of Aquatic, Coastal and Fishery Sciences, 8(2):125-134. [In Indonesian].
- Putra M. I. H., Lewis S. A., Kurniasih E. M., Prabuning D., Faiqoh E., 2016 Plankton biomass models based on GIS and remote sensing technique for predicting marine megafauna hotspots in the Solor Waters. IOP Conference Series: Earth and Environmental Science 47:1-19.
- Putra M. I. H., Mustika P. L. K., 2021 Maximum entropy model: Estimating the relative suitability of cetacean habitat in the Northern Savu Sea, Indonesia. Marine Mammal Science 37(1):6-28.
- Rupsankar C., 2010 Improvement of cooking quality and gel formation capacity of bombay duck (*Harpodon nehereus*) fish meat. Journal of Food Science and Technology 47(5):534-540.
- Salim G., Handayani K. R., Anggoro S., Indarjo A., Syakti A. D., Ibrahim A. J., Ransangan J., Prakoso L. Y., 2020 Morphometric analysis of *Harpodon nehereus*, *Harpiosquilla raphidea*, and *Scylla serrata* in the coastal waters of Tarakan, North Kalimantan, Indonesia. Biodiversitas 21(10):4829-4838.
- Setyawan W. B., Pamungkas A., 2017 [Comparison of oceanographic characteristics of the north and south coasts of Java Island: Tides, currents, and waves]. Proceedings of the 2017 National Marine and Fisheries Seminar III. Trunojoyo University, Madura, pp. 191-202. [In Indonesian].
- Siddique M. A. M., Aktar M., 2011 Changes of nutritional value of three marine dry fishes (*Johnius dussumieri*, *Harpodon nehereus* and *Lepturacanthus savala*) during Storage. Food and Nutrition Sciences 02(10):1082-1087.
- Sukresno B., Hanintyo R., Kusuma D. W., Jatisworo D., Murdimanto A., 2018 Three-way error analysis of sea surface temperature (SST) between Himawari-8, Buoy, and Mur SST In Savu Sea. International Journal of Remote Sensing and Earth Sciences (IJReSES) 15(1):25-36.
- Sukresno B., Hartoko A., Sulisty B., Subiyanto, 2015 Empirical cumulative distribution function (ECDF) analysis of *Thunnus* sp. using ARGO float sub-surface multilayer temperature data in Indian Ocean South of Java. International Conference on Tropical and Coastal Region Eco-Development 2014 (ICTCRED 2014). Procedia Environmental Sciences 23:358-367.
- Suprpto S., 2017 Demersal fish biodiversity index in Arafura Waters. Indonesian Journal of Fisheries Research 14(3):321-335. [In Indonesian].
- Wirasatriya A., Setiawan J. D., Sugianto D. N., Rosyadi I. A., Haryadi, Winarso G., Setiawan R. Y., Susanto R. D., 2020 Ekman dynamics variability along the southern coast of Java revealed by satellite data. International Journal of Remote Sensing 41(21):8475-8496.
- Wyrtki K., 1961 Physical oceanography of the Southeast Asian waters. In: Scientific results of maritime investigations of the South China Sea and Gulf of Thailand 1959-1961. Naga Report 2. University of California/Scripps Institute of Oceanography, California, 195 p.

Received: 2021. Accepted: 2021. Published online: 2021.

Authors:

Hariyadi, Faculty of Fisheries and Marine Science, Marine Science Doctoral Programe, Diponegoro University, Prof. Sudarto Street, Semarang 50275, Central Java, Indonesia, e-mail: hargeoku@gmail.com
 Johannes Hutabarat, Faculty of Fisheries and Marine Science, Diponegoro University, Prof. Sudarto Street, Semarang 50275, Central Java, Indonesia, e-mail: johannesfpik@gmail.com
 Denny Nugroho Sugianto, Faculty of Fisheries and Marine Science, Diponegoro University, Prof. Sudarto Street, Semarang 50275, Central Java, Indonesia, e-mail: dennysugianto@yahoo.com
 Agus Hartoko, Faculty of Fisheries and Marine Science, Diponegoro University, Prof. Sudarto Street, Semarang 50275, Central Java, Indonesia, e-mail: agushartoko.undip@gmail.com
 Jahved Ferianto Maro, Faculty of Fisheries and Marine Science, Diponegoro University, Prof. Sudarto Street, Semarang 50275, Central Java, Indonesia, e-mail: yantogisuntrib@gmail.com

Commented [WU12]: Where is it cuted in the text?

Commented [A13R12]: There are, but mistake name. I have corrected. tq

Erick Nugraha, Faculty of Fishing Technology, Jakarta Technical University of Fisheries, Jakarta, Indonesia, AUP Street, Pasarminggu 12520, South Jakarta, Indonesia, e-mail: nugraha_eriq1@yahoo.co.id
This is an open-access article distributed under the terms of the Creative Commons Attribution License, which permits unrestricted use, distribution and reproduction in any medium, provided the original author and source are credited.

How to cite this article:

Hariyadi, Hutabarat J., Sugianto D. N., Hartoko A., Maro J. F., Nugraha E., 2021 Analysis of specific shallow water current for endemic fish conservation at Natuna Islands, Indonesia. *AAFL Bioflux*

Tulis

10 kb

nugrahaeriq.en... 9.7 mb

Email Masuk 19 kb

Belum Dibaca

Berbintang

Draft 120

Terakhir

Arsip

Spam

Sampah

Lebih sedikit

Tampilan Sembunyikan

Foto

Dokumen

Langganan

Folder Sembunyikan

+ Folder Baru

Eni Kovacs <ek.bioflux@gmail.com>
Kepada: erick nugraha

Rab, 7 Jul 2021 jam 00:34 ☆

Dear Dr. Nugraha,

Could you please check the final form of the article attached, some adjustments were operated. Also, please address the comments from the Abstract section.


If you have any final observations and instructions prior to the article publishing, please inform us, any changes should be clearly highlighted. Change requests cannot be considered after publishing the material.

If all the authors agree with the final form of the article, could you please send us your acceptance for publishing, signed by all the authors.

Tampilkan pesan asli

Kind regards,
Editor AACL Bioflux
Eniko Kovacs

Nugraha_N... .doc
6.7 MB

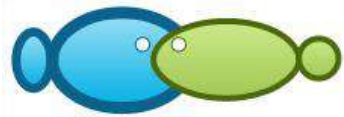
Eni Kovacs 
ek.bioflux@gmail.com
➔ Tambah ke kontak

Receive 15% Off Your Order

Get a discount on your order by entering EXTRA15. Applies to English Editing and more.

yahoo!

Download now



Analysis of specific shallow water current for endemic fish conservation at Natuna Islands, Indonesia

¹Hariyadi, ²Johannes Hutabarat, ²Denny N. Sugianto, ²Agus Hartoko, ²Jahved F. Maro, ³Erick Nugraha

¹ Faculty Fisheries and Marine Science, Marine Science Doctoral Programe, Diponegoro University, Semarang, Indonesia; ² Faculty of Fisheries and Marine Science, Diponegoro University, Semarang, Indonesia; ³ Faculty of Fishing Technology, Jakarta Technical University of Fisheries, South Jakarta, Indonesia; Corresponding author: E. Nugraha, nugraha_eriq1@yahoo.co.id

Abstract. The research was aimed to built the shallow water current spatial model and to analyse the seasonal sea surface temperature (SST), chlorophyll-a, bathymetry, and identify endemic fish in the Natuna islands seas. The research represent of east season (May to October) and west season (November to April) 2019. Range of SST was 28.0 to 31.0°C, current speed of west and east season was 0.1 to 0.5 m s⁻¹, chlorophyll-a content was 0.2 to 1.0 mg m⁻³, depth range was 0 to 150 m. Two endemic fish were found Bombay duck fish (*Harpodon nehereus*) and goatee croaker fish (*Dendrophysa russellii*).
Key Words: monsoons, sea surface temperature, chlorophyll-a, Bombay duck fish, goatee croaker fish.

Commented [WU1]: Please rephrase.

Commented [WU2]: Please develop this section, it is very short. It starts directly with the aim, first a short introduction phrase should be added.

Introduction. Characteristics of Natuna Waters are influenced by seasons. According to Wyrcki (1961), Hartoko et al (2019), Nababan & Simamora (2012), and Deliama (2017), seasons in Indonesia are divided into northwest monsoons (west monsoons), southeast monsoons (east monsoons), and transitional monsoons or transitions between the two. At the time of transition, the wind direction is irregular, and it often rains suddenly. In coastal areas, the characteristics of the waters are also influenced by tides and input from the mainland. The waters of the southwest part of Natuna receive material input from rivers and anthropogenic activities. Several rivers flow into these waters, one of which is the Binjai River, the largest river in the region (Kusumaningtyas et al 2014; Nababan et al 2015). Natuna Sea borders with the South China Sea and countries in the ASEAN region; Vietnam, Cambodia, Singapore, Thailand, and Malaysia, so it is very strategic as one of the important international shipping lanes. The Natuna Sea is also a place for the mass exchange of water from the Indonesian Ocean to the South China Sea, which has a close interaction with the Monsoon that occurs in Indonesia, so it is necessary to know thoroughly about the characteristics of the water resources (Wyrcki 1961; Nababan & Simamora 2012).

Natuna Sea has high biodiversity because of its location directly opposite the South China Sea and the high seas, so there are many endemic species in the waters, including Bombay duck fish (*Harpodon nehereus*) and Goatee croaker fish (*Dendrophysa russellii*). With the existence of endemic species in Natuna Sea, it is necessary to conduct specific research in terms of oceanography, especially the surface current patterns, so that they can be the initial data in managing and conserving these species. Currents greatly affect the distribution pattern of chlorophyll-a and sea surface temperature as important oceanographic variables for pelagic fish in Natuna Sea.

The remote sensing technology approach is very important in mapping the current velocity distribution pattern in Natuna Sea with an analysis model using the MIKE 21 Current Model. Current data was carried out by modeling currents between bathymetry

data and tidal data to obtain a model of marine distribution patterns in waters shallow, especially in Natuna Sea. This research represents an initial research in managing and conserving endemic species in Natuna Sea.

Material and Method

Description of the study site. The research was conducted in Natuna Sea, Natuna in 2019 consisting of representing the eastern monsoon (May to October) and the West monsoon (November to April). The map of the research location can be seen in Figure 1.

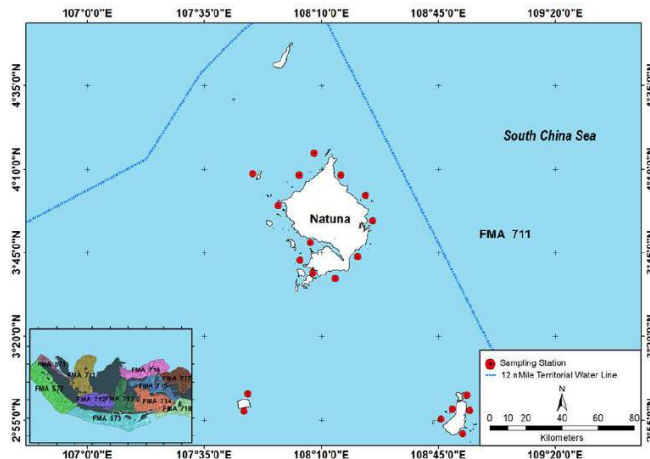


Figure 1. Station points of the field survey.

Data collection. This research was conducted using field observation methods to identify endemic species in Natuna Sea, measuring field current patterns, and modeling current patterns and current velocity using Flow Model FM Mike 21. Satellite data processing was using Aqua Modis Level 3 with Chlorophyll-a data product, sea surface temperature (SST) and water depth using GEBCO (General Bathymetric Chart of the Oceans) data, then extracting data using the ArcGIS 10.8 application and then interpolating using the Kriging method referring to (Maro et al 2021; Hartoko 2010; Hartoko et al 2016; Afifa et al 2020; Wirasatriya et al 2020; Muskananfolo et al 2021).

Data analysis. Flow Model FM MIKE 21 Flow Model FM Hydrodynamic Module was used to simulate tidal and flow patterns. This module was based on the numerical solution of the two-dimensional water equation. The builder equations in this hydrodynamics module consisted of continuity and momentum equations to simulate current patterns, including: The continuity equation for the two-dimensional flow average depth (average continuity equation), which can be written as (Garcia-Reyes et al 2015; Hartoko et al 2016):

$$\frac{\partial \zeta}{\partial t} + \frac{\partial p}{\partial x} + \frac{\partial q}{\partial y} = 0$$

Momentum equation for flow in the x-axis direction.

$$\frac{\partial p}{\partial t} + \frac{\partial}{\partial x} \left(\frac{p^2}{H} \right) + \frac{\partial}{\partial y} \left(\frac{pq}{H} \right) + gH \frac{\partial \zeta}{\partial x} + \frac{gp\sqrt{p^2+q^2}}{c^2 H^2} - \frac{1}{\rho_w} \left[\frac{\partial}{\partial x} (H\tau_{xx}) + \frac{\partial}{\partial y} (H\tau_{xy}) \right] - \Omega p - fVV_x + \frac{h}{\rho_w} \frac{\partial}{\partial x} (p_\alpha) = 0$$

Momentum equation for flow in the y-direction.

$$\frac{\partial q}{\partial t} + \frac{\partial}{\partial y} \left(\frac{q^2}{H} \right) + \frac{\partial}{\partial x} \left(\frac{pq}{H} \right) + gH \frac{\partial \zeta}{\partial y} + \frac{gq \sqrt{p^2 + q^2}}{c^2 H^2} - \frac{1}{\rho_w} \left[\frac{\partial}{\partial y} (H \tau_{yy}) + \frac{\partial}{\partial x} (H \tau_{xy}) \right] - \Omega p - fVv_y + \frac{h}{\rho_w} \frac{\partial}{\partial y} (p_\alpha) = 0$$

Where:

x, y - coordinate space functions;
 h - water depth;
 ζ - sea level elevation;
 p, q (x, y, f) - density level;
 g - gravitational acceleration;
 ρ - water density;
 v_x, v_y, v_t - wind speed on the x and y axes;
 $\tau_{bx} \tau_{by}$ - base shear stress;
 $T_{sx} T_{sy}$ - surface shear stress;
 $T_{xx}, T_{xy}, T_{yx}, T_{yy}$ - turbulent shear stress;
 ω - coriolis parameter;
 ρ_w - seawater density;
 f_v - wind friction factor.

Results and Discussion

Distribution pattern of currents, chlorophyll-a and sea surface temperature in the east monsoon (May to October). The current pattern in the east monsoon in May to October 2019 showed the dominant direction of arrival from the south to the north. Based on the difference in color gradients, it can be seen that the velocity of large currents occurred in some parts of the narrow waters flanked by two islands with a speed of 0.1 m s^{-1} to 0.5 m s^{-1} . The map of the current distribution pattern can be seen in Figure 2.

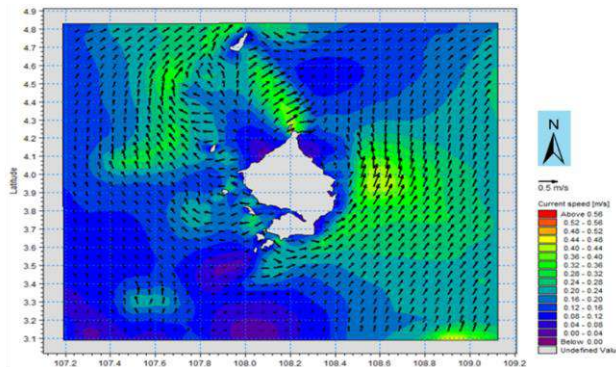


Figure 2. Distribution pattern of east monsoon currents in Natuna shallow coastal waters.

The water current in the shallow coastal waters of Natuna was the Ekman current. It has a regular current pattern. The main generator of currents in these waters was the east monsoon that moved from the waters of Java and Sumatra, where the movement of this current entered from the south of the Natuna Sea which moved into the north and northeast of the Natuna waters. This can be caused by the influence of the east monsoon wind that moved from the Indian Ocean waters to the Pacific Ocean waters. The surface current pattern in Natuna waters (Figure 2) showed a very different current direction in the east monsoon (May to October 2019). This current movement also had an impact on the distribution pattern of chlorophyll-a and sea surface temperature (SST) in the east monsoon in the coastal waters of Natuna, with the chlorophyll-a distribution ranging from

0.2 to 1.0 mm m⁻² and the SST ranging from 28.0 to 30.0°C. The distribution of chlorophyll-a and east monsoon SST can be seen in Figure 3A and Figure 3B.

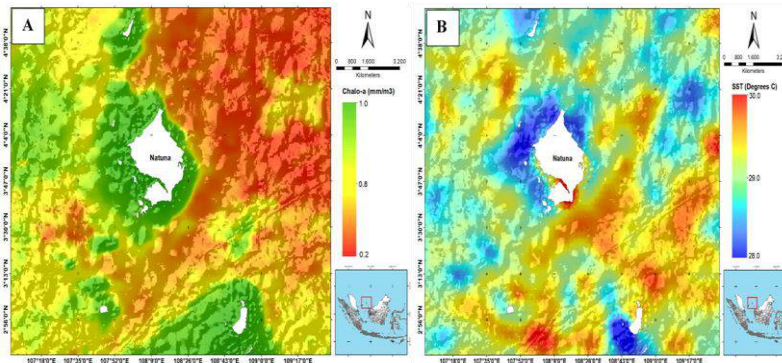


Figure 3. A: Average Chlorophyll-a distribution of East Monsoon; B: Average SST distribution of East Monsoon.

According to the average distribution of chlorophyll-a and SST range in the east monsoon in Natuna waters, it can be elaborated that there was an increase in chlorophyll-a in each coastal area reached 8.0 to 1.0 mm m⁻³ with an average SST range of 28.0 to 30.0°C. In the SST range between 28.0 to 29.0°C in the coastal area of Natuna, there was an increase in chlorophyll-a reaching 0.8 to 1.0 mm m⁻³. Comparing the increase in chlorophyll-a and SST to the current distribution pattern in the east monsoon (Figure 2) in Natuna waters, it can be shown that there was a confluence of currents in the coastal area which resulting in a water mass mixing that would increase nutrients and chlorophyll-a in the waters. This tendency would result in a decrease in sea surface temperature in Natuna waters.

Distribution pattern of currents, chlorophyll-a and sea surface temperature in the west monsoon (November-April). Research on the distribution pattern of currents, average chlorophyll-a, and average sea surface temperature in the west monsoon in November to December 2019 in Natuna Waters using the MIKE 21 current distribution pattern model and Aqua Modis level 3 data, found the current distribution patterns in Natuna waters ranged from 0.1 m s⁻¹ to 0.5 m s⁻¹ in 2019. The current pattern distribution in the west monsoon can be seen in Figure 4.

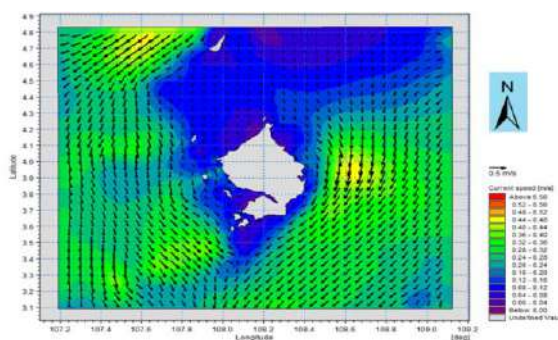


Figure 4. Current distribution patterns of West Monsoon in Natuna Sea.

Based on Figure 4 regarding the current distribution pattern in the West monsoon of the Natuna Sea, the direction and pattern of inflow were from the South China Sea, the

northern part of Natuna. It was when on the West monsoon when the west wind from the Pacific Ocean that entered Indonesian waters through the South China Sea was high enough that increasing current speed of up to 0.5 m s^{-1} , with a current color degradation pattern showing high clusters in the shallow waters of the Natuna Sea.

The average chlorophyll-a in the west monsoon ranged from 0.1 to 0.7 mm m^{-3} and the average SST in the west monsoon ranged from 28.0 to 31.0°C . The distribution pattern of the average chlorophyll-a and the average SST in western monsoon in Natuna waters can be seen in Figure 5A and Figure 5B.

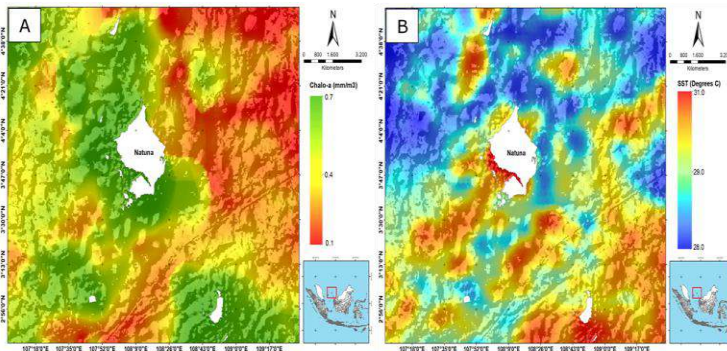


Figure 5. A. Average chlorophyll-a in the west monsoon; B. Average SST in the west monsoon in Natuna waters.

According to Figures 5A and 5B, it can be elaborated that there was an increase in chlorophyll-a reaching 0.7 mm m^{-3} in Natuna waters with an average SST range of 28.0 to 29.0°C . Comparing with the current distribution patterns in the west monsoon (Figure 4) in the Natuna waters, it can be explained that the main factor of the current direction pattern was the monsoon wind. In the west monsoon, the wind blew from the Pacific Ocean entering through the South China Sea into the Natuna waters with slower movement toward the coast due to the current collisions from the northern part and the north-western part of the Natuna Sea. This current collision resulted in an increase in chlorophyll-a and a decrease in SST in the shallow waters of the Natuna Sea.

Natuna waters depth. The water depth data analysis in Natuna waters used GEBCO (General Bathymetric Chart of the Oceans) data. The data was cropped according to the research location, then was analyzed using 2D, and then was interpolated using a kriging distribution model. Results of the analysis found the depth of the natural waters ranged from 0 to 150 m . The results of the 2D model analysis can be seen in Figure 6.

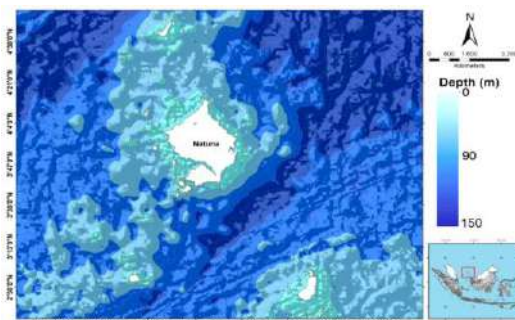


Figure 6. Natuna waters depth.

Based on the 2D model of the Natuna waters depth, it can be elaborated that in the northern part of Natuna towards the South China Sea, the depth range reached 150 m, while in the coastal part of Natuna, the depth ranged from 0 to 30 m.

Endemic species in Natuna waters. Results of the field survey (observations) conducted in Natuna waters and data collection of the species caught in the location through analysis of local market distribution found 2 endemic fish species (fish that exist only in one particular place, and not in others), namely Bombay duck fish (*H. nehereus*) and Goatee croaker fish (*Dendrophysa russelli*). Images of each species can be seen in Figure 7A and Figure 7B.

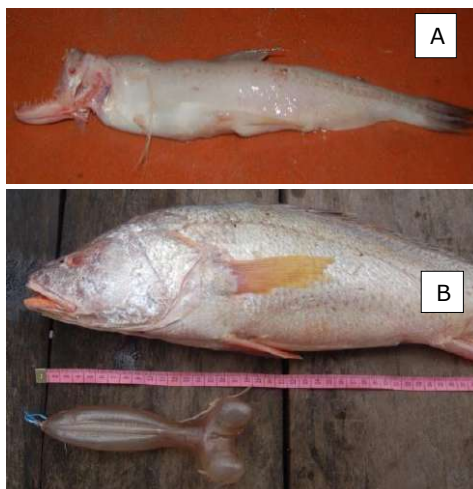


Figure 7. A: Bombay duck fish (*Harpodon nehereus*); B: Goatee croaker fish (*Dendrophysa russelli*).

Bombay duck fish (*H. nehereus*). Bombay duck fish has phylum: Chordata; class: Actinopterygii; order: Aulopiformes; family: Synodontidae; genus: Harpadon; species: *H. nehereus*; phylum: Chordata; class: Pisces; order: Myctophoide; family: Scopelidae; Genus: Harpodon; species: *H. nehereus*. Lomek fish has a slightly flattened elongated body shape, the tip of the snout is short and rounded, and the tail fin has 3 parts: top, bottom, and middle as a continuation of the scale line. The teeth of the two jaws have various shapes; flat arch, large arch, and small arch. The body shape is bilaterally symmetrical, compressed, while the head shape is blunt (Siddique & Aktar 2011; Jin et al 2012; Bhattacharya et al 2016; Bo et al 2013; Salim et al 2020; Rupsankar 2010).

H. nehereus is a type of demersal fish, the preferred type of substrate is mud and fine sand, especially beaches close to river mouths (Kalhoroa et al 2020; Salim et al 2020; Bhattacharya et al 2016). The fish was located on the bottom of the waters with the speed of sea surface currents to breed in the range of 0.2 to 0.4 m s⁻¹ with chlorophyll-a content ranging from 0.2 to 0.5 mm m⁻³ and an SST range ranging from 28 to 30°C in every appearance of *H. nehereus* at the bottom of the waters (Siddique & Aktar 2011; Bo et al 2013).

H. nehereus is a type of fish in Indonesian waters only found in the waters of Natuna and Bangka Belitung. This fish has important economic value in Natuna, Bangka Belitung, and several other coastal areas in Sumatra because it has important economic value. This fish needs to be protected and conserved in order to be sustainable.

Goatee croaker fish (*D. russelli*). Goatee croaker fish with classification phylum: Chordata; class: Actinopterygii; order: Perciformes; family: Sciaenidae; genus:

Dendrophysa; species: *D. russelii* (Cuvier, 1829). This fish has a slightly flat elongated body (vertical), covered with scales to the head. The first and second dorsal fins are fused (Figure 7B). The back edge of the front gill cover is serrated. The special feature of the Gerot fish is a small mouth but covered by very thick lips (according to one of the local names of this fish). The pectoral fins are longer and tapered than the pelvic fins. The dorsal fin has 12 spines and 13 to 15 soft fin rays. Gerot fish has a silvery gray body-color, with 4-5 longitudinal dark gray stripes that are dashed and faint on the sides of the body. Three or four of these lines are above the lateral line of the body. On the dorsal fin, there are 2 to 3 bands of brown spots. This fish can reach a size of 80 cm, but generally between 40 to 50 cm (Annisa et al 2018; Suprpto 2017; Khairul et al 2018). This fish has an important economic value, especially in its swimming bubbles. The price of this fish is increasing highly because it has swimming bubbles which are very expensive and contains high collagen. This fish exists in sea waters close to rivers with a water temperature range of 28 to 30°C.

Discussion. The results of the study found an average range from 0.1 to 0.5 m s⁻¹ for the current velocity in the east and west monsoons, in Natuna waters. In the east monsoon, the current moved from the south to the north of Natuna (towards the South China Sea). According to (Pamungkas 2018; Purba 2019; Maro et al 2021; Hartoko et al 2019; Wirasatriya et al 2020; Muskananfolo et al 2021), during the east monsoon, the wind moved from the continent of Asia to the continent of Australia, while in the west monsoon, the wind will move from the Australian continent to the Asian continent. The influence of the monsoon wind would also affect the Natuna Coastal waters, especially due to their location in between the Natuna Sea, Sumatra Sea and the Java Sea, which is the monsoon wind flow area (Setyawan & Pamungkas 2017). The research found that there was a collision of currents that had an impact on the distribution pattern of chlorophyll-a and sea surface temperature (SST) in the East monsoon in the coastal waters of Natuna. The results of the analysis of the average distribution of chlorophyll-a were in the range of 0.2 to 1.0 mm m⁻² and the SST ranged from 28.0 to 30.0°C. The previous research (Muskananfolo et al 2021; Pamungkas 2018; Maro et al 2021; Hartoko 2010; Sukresno et al 2015; Sukresno et al 2018; Lebrec et al 2019) found that if there is a collision between the sea surface currents in a body of water, the chlorophyll-a will increase and the SST will decrease. This is common in the coastal areas, due to the presence of numerous small islands that are close to each other, thus blocking the movement of currents from deep waters to shallow waters. These waters tend to have a high level of fertility so that many organisms roam in these waters for shelter, foraging and spawning. Conversely, in the West monsoon (November to December), the movement pattern of the current is from the northern part of Natuna (the South China Sea) to the Natuna coastal waters. The results of the study found that the current movement was influenced by the west monsoon, which blew strongly from the Pacific Ocean towards the South China Sea, then towards the Natuna Coast, the Sumatra Sea and the Java Sea. According to (Hartoko et al 2019; Maro et al 2021; Wirasatriya et al 2020; Muskananfolo et al 2021) the movement of incoming currents from the northern part of Indonesia was caused by the west monsoon wind blowing from the Pacific Ocean to the Indian Ocean, resulting in a significant increase in the current speed during that season.

During the West monsoon, an upwelling occurred in the Natuna coastal waters, resulting in a decrease of the SST and chlorophyll-a. Mixing the seawater masses (by upwelling) could decrease the SST and chlorophyll-a at sea level. Waters that have upwelling characteristics are fertile, in terms of nutrients and chlorophyll-a, which makes them attracting for many marine organisms in their migration for food and spawning (García-Reyes et al 2015; Chung & Gong 2019; Putra et al 2016; Wirasatriya et al 2020; Sukresno et al 2015; Putra & Mustika 2021).

The study found 2 types of endemic fish, during the west and east monsoons, namely *H. nehereus* and *D. russelli*, which were found in the Natuna coastal waters, with a surface current velocity ranging from 0.1 to 0.5 m s⁻¹, a chlorophyll-a sea level ranging from 0.2 to 1.0 mm m⁻³, an average SST ranging from 28 to 30°C, and an average water

depth ranging from 0 to 150 m. According to Siddique & Aktar (2011), Jin et al (2012), Bhattacharya et al (2016), Annisa et al (2016), and Suprpto (2017), at the location of the appearance of *H. nehereus* and *D. russelli* in coastal waters, the average sea surface temperature ranged from 27 to 30°C, the sea surface currents ranged from 0.3 to 0.5 m s⁻¹ and the average depth ranged from 0 to 20 m. A management of these endemic fish species has to be implemented in order to preserve their populations sustainability, considering their significant economic value, making them more susceptible to be overexploited. Therefore, it is necessary to manage the species *H. nehereus* and *D. russelli* in Natuna waters in order to remain sustainable.

Conclusions. The research results of the oceanographic variables analysis, mainly the depth, SST, chlorophyll-a content and monsoonal current speed, will support the site selection and the attempt of endemic fish conservation, mainly in the shallow water of the coastal areas around Natuna islands. The research occurred during the east season (May to October) and the west season (November to April) 2019. The SST ranged from 28.0 to 31.0°C, the current speed of west and east season ranged from 0.1 to 0.5 m s⁻¹, the chlorophyll-a content ranged from 0.2 to 1.0 mg m⁻³ and the depth ranged from 0 to 150 m. The two identified endemic fish are *H. nehereus* and *D. russelli*.

Acknowledgements. The authors would like to thank to the Dean Faculty of Fisheries and Marine Science, Diponegoro University, Semarang, Indonesia, for the research grant, But also to all other parties for their help during the field sampling and laboratory analysis.

Conflict of interest. The authors declare no conflict of interest.

References

- Afifa F. H., Hartoko A., Purnomo P. W., 2020 Changes and vulnerability of coral reef ecosystem based on field and remote sensing data on Kemujan Island, Karimunjawa Islands, Indonesia. *AAFL Bioflux* 13(2):1016-1026.
- Annisa C. A., Rahardjo M. F., Zahid A., Simanjuntak C. P. H., Asriansyah A., Aditriawan R. M., 2018 [Diet and feeding habits of the Javelin Grunt, *Pomadourus kaakan* (Cuvier, 1830) in Pabean Bay, West Java]. *Gadjah Mada University of Fisheries Journal* 20(1):31-40. [In Indonesian].
- Bhattacharya T., Ghorai T., Dora K. C., Sarkar S., Chowdhury S., 2016 Influence of chemical preservatives on the quality and shelf-life of dried Bombay duck (*Harpodon nehereus*). *The Asian Journal of Animal Science* 11(1):1-8.
- Bo Z., Xu T., Wang R., Jin X., Sun Y., 2013 Complete mitochondrial genome of the bombay duck *Harpodon nehereus* (Aulopiformes, Synodontidae). *Mitochondria DNA. The Journal of DNA Mapping, Sequencing, and Analysis* 24(6):660-662.
- Chung C. C., Gong S. C., 2019 Attribution of the growth of a distinct population of synechococcus to the coverage of lateral water on an upwelling. *Terrestrial, Atmospheric and Oceanic Sciences* 30:575-587.
- Deliana, 2017 [Estimation of sustainable potential and utilization level of sea anemone (*Sticodactyla gigantea*) in Makassar Strait Waters]. MSc thesis. Water Resources Management Study Program, Department of Fisheries, Faculty of Marine and Fishery Sciences, Hasanuddin University, Makassar, 27 p. [In Indonesian].
- García-Reyes M., Sydeman W. J., Schoeman D. S., Rykaczewski R. R., Black B. A., Smit A. J., Bograd S. J., 2015 Under pressure: climate change, upwelling, and eastern boundary upwelling ecosystems. *Frontiers in Marine Science* 2:109.
- Hartoko A., 2010 Spatial distribution of thunnus sp, vertical and horizontal sub-surface multilayer temperature profiles of in-situ agro float data in Indian Ocean. *Journal Of Coastal Development* 14(1):61-74.
- Hartoko A., Helmi M., Sukarno M., Hariyadi, 2016 Spatial tsunami wave modelling for the South Java Coastal Area, Indonesia. *International Journal of GEOMATE* 11(25):2455-2460.

- Hartoko A., Febrianto A., Pamungkas A., Fachruddin I., Helmi M., Hariyadi, 2019 The myth and legend of Sadai and Gaspar Strait Bangka Belitung (Banca-Billiton) and oceanographic conditions. *International Journal of GEOMATE* 17(62):212–218.
- Jin T., Wu Y., Wang Q., 2012 Production and characteristics of protein hydrolysates from bombay duck (*Harpodon nehereus*). *Journal of Food Processing and Preservation* 36(1):30-37.
- Kalhoroa M. T., Yongtong M., Kalhorob M. A., Shahc S. B. H., Memond A. M., Moshine M., Dahria M. A., 2020 Resource evaluation, stock, growth and mortality of the Bombay duck (*Harpodon nehereus* Hamilton, 1822) fishery in the coastal waters of Pakistan. *Indian Journal of Geo Marine Sciences* 49(7):1222-1228.
- Khairul, Mawardi W., Riyanto M., 2018 [Use of blue light emitting diode (Led) lamps on floating chart catches in Aceh Jaya District]. *Albacore Marine Fisheries Research Journal* 1(2):235-243. [In Indonesian].
- Kusumaningtyas M. A., Bramawanto R., Daulat A., Pranowo W. S., 2014 [The water quality of Natuna coastal water during transitional season]. *DEPIK Journal of Science - Aquatic, Coastal and Fishery Sciences* 3(1):10-20. [In Indonesian].
- Lebrec M., Stefanski S., Gates R., Acar S., Golbuu Y., Claudel-Rusin A., Kurihara H., Rehdanz K., Paugam-Baudoin D., Tsunoda T., Swarzenski P. W., 2019 Ocean acidification impacts in select Pacific Basin coral reef ecosystems. *Regional Studies in Marine Science* 28:1-8.
- Maro J. F., Hartoko A., Anggoro S., Muskananfolo M. R., Nugraha E., 2021 Sea surface temperature and chlorophyll-a concentrations from MODIS satellite data and presence of cetaceans in Savu, Indonesia. *AAFL Bioflux* 14(3):1190-1200.
- Muskananfolo M. R., Jumsar, Wirasatriya A., 2021 Spatio-temporal distribution of chlorophyll-a concentration, sea surface temperature and wind speed using aqua-modis satellite imagery over the Savu Sea, Indonesia. *Remote Sensing Applications: Society and Environment* 22:1-9.
- Nababan B., Hadianti S., Natih N. M. N., 2015 [Dynamic of sea level anomaly of Indonesian waters]. *Journal of Tropical Marine Science and Technology* 7(1):259-272. [In Indonesian].
- Nababan B., Simamora K., 2012 [Variability of chlorophyll-a concentration and sea surface temperature of Natuna Waters]. *Journal of Tropical Marine Science and Technology* 4(1):121-134. [In Indonesian].
- Pamungkas A., 2018 [Characteristics of oceanographic parameters (tidals, currents, and waves) in the north and south waters of Bangka Island]. *Marina Oceanography Bulletin* 7(1):51-58. [In Indonesian].
- Purba N. P., Pranowo W. S., Simanjuntak S. M., Faizal I., Jasmin H. H., Handyman D. I. W., Mulyani P. G., 2019 [Trajectory of microplastics at Savu Sea Marine National Park, East Nusa Tenggara]. *DEPIK. Journal of Aquatic, Coastal and Fishery Sciences*, 8(2):125-134. [In Indonesian].
- Putra M. I. H., Lewis S. A., Kurniasih E. M., Prabuning D., Faiqoh E., 2016 Plankton biomass models based on GIS and remote sensing technique for predicting marine megafauna hotspots in the Solor Waters. *IOP Conference Series: Earth and Environmental Science* 47:1-19.
- Putra M. I. H., Mustika P. L. K., 2021 Maximum entropy model: Estimating the relative suitability of cetacean habitat in the Northern Savu Sea, Indonesia. *Marine Mammal Science* 37(1):6–28.
- Rupsankar C., 2010 Improvement of cooking quality and gel formation capacity of bombay duck (*Harpodon nehereus*) fish meat. *Journal of Food Science and Technology* 47(5):534–540.
- Salim G., Handayani K. R., Anggoro S., Indarjo A., Syakti A. D., Ibrahim A. J., Ransangan J., Prakoso L. Y., 2020 Morphometric analysis of *Harpodon nehereus*, *Harpiosquilla raphidea*, and *Scylla serrata* in the coastal waters of Tarakan, North Kalimantan, Indonesia. *Biodiversitas* 21(10):4829-4838.
- Setyawan W. B., Pamungkas A., 2017 [Comparison of oceanographic characteristics of the north and south coasts of Java Island: Tides, currents, and waves]. *Proceedings*

- of the 2017 National Marine and Fisheries Seminar III. Trunojoyo University, Madura, pp. 191–202. [In Indonesian].
- Siddique M. A. M., Aktar M., 2011 Changes of nutritional value of three marine dry fishes (*Johnius dussumieri*, *Harpodon nehereus* and *Lepturacanthus savala*) during Storage. Food and Nutrition Sciences 02(10):1082-1087.
- Sukresno B., Hanintyo R., Kusuma D. W., Jatisworo D., Murdimanto A., 2018 Three-way error analysis of sea surface temperature (SST) between Himawari-8, Buoy, and Mur SST In Savu Sea. International Journal of Remote Sensing and Earth Sciences (IJReSES) 15(1):25-36.
- Sukresno B., Hartoko A., Sulisty B., Subiyanto, 2015 Empirical cumulative distribution function (ECDF) analysis of *Thunnus* sp. using ARGO float sub-surface multilayer temperature data in Indian Ocean South of Java. International Conference on Tropical and Coastal Region Eco-Development 2014 (ICTCRED 2014). Procedia Environmental Sciences 23:358–367.
- Suprpto S., 2017 [Demersal fish biodiversity index in Arafura waters]. Indonesian Journal of Fisheries Research 14(3):321-335. [In Indonesian].
- Wirasatriya A., Setiawan J. D., Sugianto D. N., Rosyadi I. A., Haryadi, Winarso G., Setiawan R. Y., Susanto R. D., 2020 Ekman dynamics variability along the southern coast of Java revealed by satellite data. International Journal of Remote Sensing 41(21):8475–8496.
- Wyrski K., 1961 Physical oceanography of the Southeast Asian waters. In: Scientific results of maritime investigations of the South China Sea and Gulf of Thailand 1959–1961. Naga Report 2. University of California/Scripps Institute of Oceanography, California, 195 p.

Received: 2021. Accepted: 2021. Published online: 2021.

Authors:

Hariyadi, Faculty of Fisheries and Marine Science, Marine Science Doctoral Programe, Diponegoro University, Prof. Sudarto Street, Semarang 50275, Central Java, Indonesia, e-mail: hargeoku@gmail.com
 Johannes Hutabarat, Faculty of Fisheries and Marine Science, Diponegoro University, Prof. Sudarto Street, Semarang 50275, Central Java, Indonesia, e-mail: johannesfpik@gmail.com
 Denny Nugroho Sugianto, Faculty of Fisheries and Marine Science, Diponegoro University, Prof. Sudarto Street, Semarang 50275, Central Java, Indonesia, e-mail: dennysugianto@yahoo.com
 Agus Hartoko, Faculty of Fisheries and Marine Science, Diponegoro University, Prof. Sudarto Street, Semarang 50275, Central Java, Indonesia, e-mail: agushartoko.undip@gmail.com
 Jahved Ferianto Maro, Faculty of Fisheries and Marine Science, Diponegoro University, Prof. Sudarto Street, Semarang 50275, Central Java, Indonesia, e-mail: yantogisuntrib@gmail.com
 Erick Nugraha, Faculty of Fishing Technology, Jakarta Technical University of Fisheries, Jakarta, Indonesia, AUP Street, Pasarminggu 12520, South Jakarta, Indonesia, e-mail: nugraha_eriq1@yahoo.co.id
 This is an open-access article distributed under the terms of the Creative Commons Attribution License, which permits unrestricted use, distribution and reproduction in any medium, provided the original author and source are credited.

How to cite this article:

Hariyadi, Hutabarat J., Sugianto D. N., Hartoko A., Maro J. F., Nugraha E., 2021 Analysis of specific shallow water current for endemic fish conservation at Natuna Islands, Indonesia. AACL Bioflux 14():

erick nugraha <nugraha_eriq1@yahoo.co.id> Kepada: Eni Kovacs Rat, 7 Jul 2021 jam 09:50

Dear Dr. Eni
I send you revised manuscript journal and acceptance for publishing letter.

thank you

Tampilkan pesan asli Unduh semua lampiran sebagai file zip

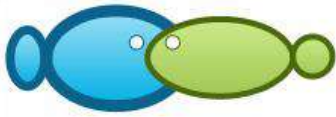


Balas, Balas ke Semua atau Teruskan

Eni Kovacs
ekbioflux@gmail.com
+ Tambah ke kontak

yahoo! Download now
Get FREE 100GB storage on the new Yahoo Mail





Analysis of specific shallow water current for endemic fish conservation at Natuna Islands, Indonesia

¹Hariyadi, ²Johannes Hutabarat, ²Denny N. Sugianto, ²Agus Hartoko, ²Jahved F. Maro, ³Erick Nugraha

¹ Faculty Fisheries and Marine Science, Marine Science Doctoral Programe, Diponegoro University, Semarang, Indonesia; ² Faculty of Fisheries and Marine Science, Diponegoro University, Semarang, Indonesia; ³ Faculty of Fishing Technology, Jakarta Technical University of Fisheries, South Jakarta, Indonesia; Corresponding author: E. Nugraha, nugraha_eriq1@yahoo.co.id

Abstract. The research was aimed to built the shallow water current spatial model and to analyse the seasonal sea surface temperature (SST), chlorophyll-a, bathymetry, and identify endemic fish in the Natuna islands seas. The research represent of east season (May to October) and west season (November to April) 2019. Range of SST was 28.0 to 31.0°C, current speed of west and east season was 0.1 to 0.5 m s⁻¹, chlorophyll-a content was 0.2 to 1.0 mg m⁻³, depth range was 0 to 150 m. Two endemic fish were found Bombay duck fish (*Harpodon nehereus*) and goatee croaker fish (*Dendrophysa russelli*).
Key Words: monsoons, sea surface temperature, chlorophyll-a, Bombay duck fish, goatee croaker fish.

Abstract. Natuna Sea has high biodiversity because of its location directly opposite the South China Sea and the high seas, so there are many endemic species in the waters. Currents greatly affect the distribution pattern of chlorophyll-a and sea surface temperature as important oceanographic variables for pelagic fish in Natuna Sea. The remote sensing technology approach is very important in mapping the current velocity distribution pattern in Natuna Sea with an analysis model using the MIKE 21 Current Model. The research was conducted in Natuna Sea in 2019 consisting of representing the eastern monsoon (May to October) and the West monsoon (November to April). Flow Model FM MIKE 21 Flow Model FM Hydrodynamic Module was used to simulate tidal and flow patterns. The current pattern in the east monsoon in May to October 2019 showed the dominant direction of arrival from the south to the north. currents, average chlorophyll-a, and average sea surface temperature in the west monsoon in November to December 2019 in Natuna Waters using the MIKE 21 current distribution pattern model and Aqua Modis level 3 data, found the current distribution patterns in Natuna waters ranged from 0.1 m s⁻¹ to 0.5 m s⁻¹. The average chlorophyll-a in the west monsoon ranged from 0.1 to 0.7 mg m⁻³ and the average SST in the west monsoon ranged from 28.0 to 31.0°C. The results of the field survey conducted in Natuna waters are found 2 endemic fish species (fish that exist only in one particular place, and not in others), namely Bombay duck fish (*Harpodon nehereus*) and Goatee croaker fish (*Dendrophysa russelli*).
Key Words: monsoons, sea surface temperature, chlorophyll-a, Bombay duck fish, goatee croaker fish.

Introduction. Characteristics of Natuna Waters are influenced by seasons. According to Wyrski (1961), Hartoko et al (2019), Nababan & Simamora (2012), and Deliana (2017), seasons in Indonesia are divided into northwest monsoons (west monsoons), southeast monsoons (east monsoons), and transitional monsoons or transitions between the two. At the time of transition, the wind direction is irregular, and it often rains suddenly. In coastal areas, the characteristics of the waters are also influenced by tides and input from the mainland. The waters of the southwest part of Natuna receive material input from rivers and anthropogenic activities. Several rivers flow into these waters, one of which is the Binjai River, the largest river in the region (Kusumaningtyas et al 2014; Nababan et al 2015). Natuna Sea borders with the South China Sea and countries in the ASEAN region; Vietnam, Cambodia, Singapore, Thailand, and Malaysia, so it is very strategic as one of the important international shipping lanes. The Natuna Sea is also a place for the mass exchange of water from the Indonesian Ocean to the South China Sea,

Commented [WU1]: Please rephrase.

Commented [WU2]: Please develop this section, it is very short. It starts directly with the aim, first a short introduction phrase should be added.

Commented [A3R2]: I changed. Thank you

which has a close interaction with the Monsoon that occurs in Indonesia, so it is necessary to know thoroughly about the characteristics of the water resources (Wyrтки 1961; Nababan & Simamora 2012).

Natuna Sea has high biodiversity because of its location directly opposite the South China Sea and the high seas, so there are many endemic species in the waters, including Bombay duck fish (*Harpodon nehereus*) and Goatee croaker fish (*Dendrophysa russelii*). With the existence of endemic species in Natuna Sea, it is necessary to conduct specific research in terms of oceanography, especially the surface current patterns, so that they can be the initial data in managing and conserving these species. Currents greatly affect the distribution pattern of chlorophyll-a and sea surface temperature as important oceanographic variables for pelagic fish in Natuna Sea.

The remote sensing technology approach is very important in mapping the current velocity distribution pattern in Natuna Sea with an analysis model using the MIKE 21 Current Model. Current data was carried out by modeling currents between bathymetry data and tidal data to obtain a model of marine distribution patterns in waters shallow, especially in Natuna Sea. This research represents an initial research in managing and conserving endemic species in Natuna Sea.

Material and Method

Description of the study site. The research was conducted in Natuna Sea, Natuna in 2019 consisting of representing the eastern monsoon (May to October) and the West monsoon (November to April). The map of the research location can be seen in Figure 1.

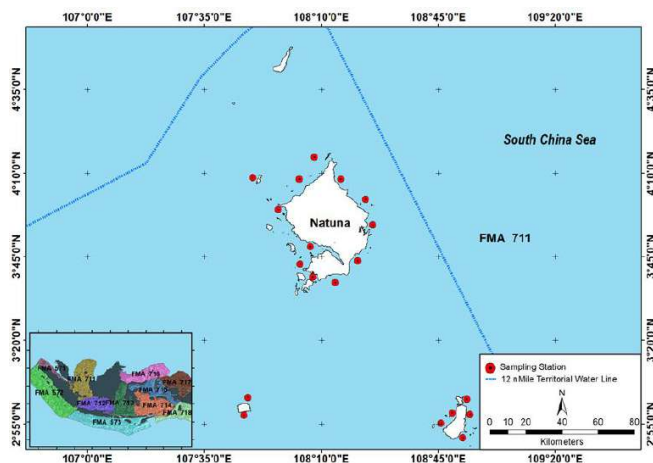


Figure 1. Station points of the field survey.

Data collection. This research was conducted using field observation methods to identify endemic species in Natuna Sea, measuring field current patterns, and modeling current patterns and current velocity using Flow Model FM Mike 21. Satellite data processing was using Aqua Modis Level 3 with Chlorophyll-a data product, sea surface temperature (SST) and water depth using GEBCO (General Bathymetric Chart of the Oceans) data, then extracting data using the ArcGIS 10.8 application and then interpolating using the Kriging method referring to (Maro et al 2021; Hartoko 2010; Hartoko et al 2016; Afifa et al 2020; Wirasatriya et al 2020; Muskananfolo et al 2021).

Data analysis. Flow Model FM MIKE 21 Flow Model FM Hydrodynamic Module was used to simulate tidal and flow patterns. This module was based on the numerical solution of the two-dimensional water equation. The builder equations in this hydrodynamics module consisted of continuity and momentum equations to simulate current patterns, including: The continuity equation for the two-dimensional flow average depth (average continuity equation), which can be written as (Garcia-Reyes et al 2015; Hartoko et al 2016):

$$\frac{\partial \zeta}{\partial t} + \frac{\partial p}{\partial x} + \frac{\partial q}{\partial y} = 0$$

Momentum equation for flow in the x-axis direction.

$$\frac{\partial p}{\partial t} + \frac{\partial}{\partial x} \left(\frac{p^2}{H} \right) + \frac{\partial}{\partial y} \left(\frac{pq}{H} \right) + gH \frac{\partial \zeta}{\partial x} + \frac{gp\sqrt{p^2+q^2}}{c^2 H^2} - \frac{1}{\rho_w} \left[\frac{\partial}{\partial x} (H\tau_{xx}) + \frac{\partial}{\partial y} (H\tau_{xy}) \right] - \Omega p - fVV_x + \frac{h}{\rho_w} \frac{\partial}{\partial x} (p_a) = 0$$

Momentum equation for flow in the y-direction.

$$\frac{\partial q}{\partial t} + \frac{\partial}{\partial y} \left(\frac{q^2}{H} \right) + \frac{\partial}{\partial x} \left(\frac{pq}{H} \right) + gH \frac{\partial \zeta}{\partial y} + \frac{gq\sqrt{p^2+q^2}}{c^2 H^2} - \frac{1}{\rho_w} \left[\frac{\partial}{\partial y} (H\tau_{yy}) + \frac{\partial}{\partial x} (H\tau_{xy}) \right] - \Omega p - fVV_y + \frac{h}{\rho_w} \frac{\partial}{\partial y} (p_a) = 0$$

Where:

x,y - coordinate space functions;
h - water depth;
 ζ - sea level elevation;
p,q (x, y, f) - density level;
g - gravitational acceleration;
 ρ - water density;
 v_x, v_y, v_t - wind speed on the x and y axes;
 τ_{bx}, τ_{by} - base shear stress;
 T_{sx}, T_{sy} - surface shear stress;
 $T_{xx}, T_{xy}, T_{yx}, T_{yy}$ - turbulent shear stress;
 ω - coriolis parameter;
 ρ_w - seawater density;
fv - wind friction factor.

Results and Discussion

Distribution pattern of currents, chlorophyll-a and sea surface temperature in the east monsoon (May to October). The current pattern in the east monsoon in May to October 2019 showed the dominant direction of arrival from the south to the north. Based on the difference in color gradients, it can be seen that the velocity of large currents occurred in some parts of the narrow waters flanked by two islands with a speed of 0.1 m s⁻¹ to 0.5 m s⁻¹. The map of the current distribution pattern can be seen in Figure 2.

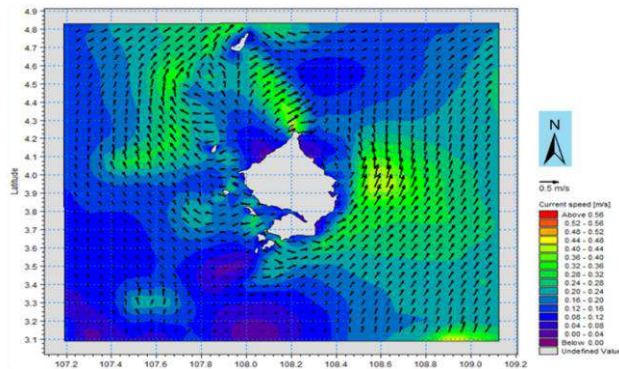


Figure 2. Distribution pattern of east monsoon currents in Natuna shallow coastal waters.

The water current in the shallow coastal waters of Natuna was the Ekman current. It has a regular current pattern. The main generator of currents in these waters was the east monsoon that moved from the waters of Java and Sumatra, where the movement of this current entered from the south of the Natuna Sea which moved into the north and northeast of the Natuna waters. This can be caused by the influence of the east monsoon wind that moved from the Indian Ocean waters to the Pacific Ocean waters. The surface current pattern in Natuna waters (Figure 2) showed a very different current direction in the east monsoon (May to October 2019). This current movement also had an impact on the distribution pattern of chlorophyll-a and sea surface temperature (SST) in the east monsoon in the coastal waters of Natuna, with the chlorophyll-a distribution ranging from 0.2 to 1.0 mm m^{-2} and the SST ranging from 28.0 to 30.0°C. The distribution of chlorophyll-a and east monsoon SST can be seen in Figure 3A and Figure 3B.

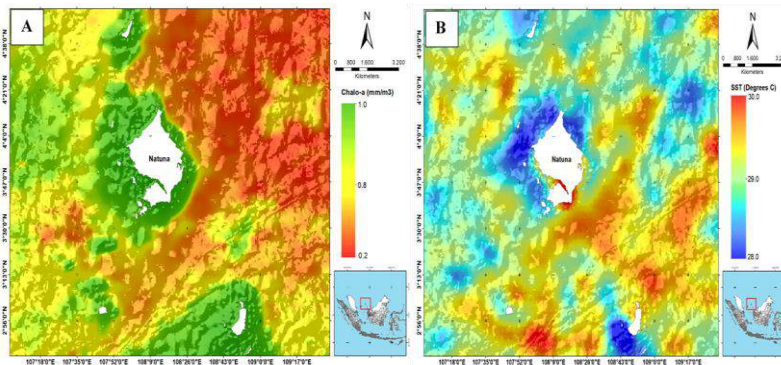


Figure 3. A: Average Chlorophyll-a distribution of East Monsoon; B. Average SST distribution of East Monsoon.

According to the average distribution of chlorophyll-a and SST range in the east monsoon in Natuna waters, it can be elaborated that there was an increase in chlorophyll-a in each coastal area reached 8.0 to 1.0 mm m^{-3} with an average SST range of 28.0 to 30.0°C. In the SST range between 28.0 to 29.0°C in the coastal area of Natuna, there was an increase in chlorophyll-a reaching 0.8 to 1.0 mm m^{-3} . Comparing the increase in chlorophyll-a and SST to the current distribution pattern in the east monsoon (Figure 2) in Natuna waters, it can be shown that there was a confluence of currents in the coastal area which resulting in a water mass mixing that would increase nutrients and

chlorophyll-a in the waters. This tendency would result in a decrease in sea surface temperature in Natuna waters.

Distribution pattern of currents, chlorophyll-a and sea surface temperature in the west monsoon (November-April). Research on the distribution pattern of currents, average chlorophyll-a, and average sea surface temperature in the west monsoon in November to December 2019 in Natuna Waters using the MIKE 21 current distribution pattern model and Aqua Modis level 3 data, found the current distribution patterns in Natuna waters ranged from 0.1 m s^{-1} to 0.5 m s^{-1} in 2019. The current pattern distribution in the west monsoon can be seen in Figure 4.

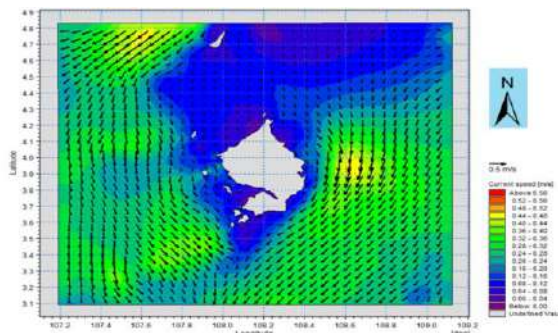


Figure 4. Current distribution patterns of West Monsoon in Natuna Sea.

Based on Figure 4 regarding the current distribution pattern in the West monsoon of the Natuna Sea, the direction and pattern of inflow were from the South China Sea, the northern part of Natuna. It was when on the West monsoon when the west wind from the Pacific Ocean that entered Indonesian waters through the South China Sea was high enough that increasing current speed of up to 0.5 m s^{-1} , with a current color degradation pattern showing high clusters in the shallow waters of the Natuna Sea.

The average chlorophyll-a in the west monsoon ranged from 0.1 to 0.7 mm m^{-3} and the average SST in the west monsoon ranged from 28.0 to 31.0°C . The distribution pattern of the average chlorophyll-a and the average SST in western monsoon in Natuna waters can be seen in Figure 5A and Figure 5B.

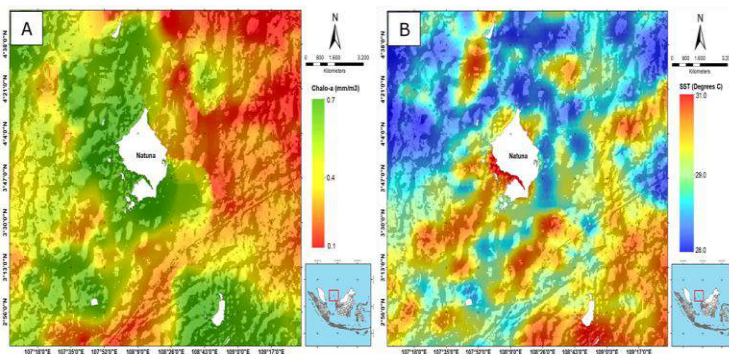


Figure 5. A. Average chlorophyll-a in the west monsoon; B. Average SST in the west monsoon in Natuna waters.

According to Figures 5A and 5B, it can be elaborated that there was an increase in chlorophyll-a reaching 0.7 mm m^{-3} in Natuna waters with an average SST range of 28.0 to 29.0°C . Comparing with the current distribution patterns in the west monsoon (Figure

4) in the Natuna waters, it can be explained that the main factor of the current direction pattern was the monsoon wind. In the west monsoon, the wind blew from the Pacific Ocean entering through the South China Sea into the Natuna waters with slower movement toward the coast due to the current collisions from the northern part and the north-western part of the Natuna Sea. This current collision resulted in an increase in chlorophyll-a and a decrease in SST in the shallow waters of the Natuna Sea.

Natuna waters depth. The water depth data analysis in Natuna waters used GEBCO (General Bathymetric Chart of the Oceans) data. The data was cropped according to the research location, then was analyzed using 2D, and then was interpolated using a kriging distribution model. Results of the analysis found the depth of the natural waters ranged from 0 to 150 m. The results of the 2D model analysis can be seen in Figure 6.

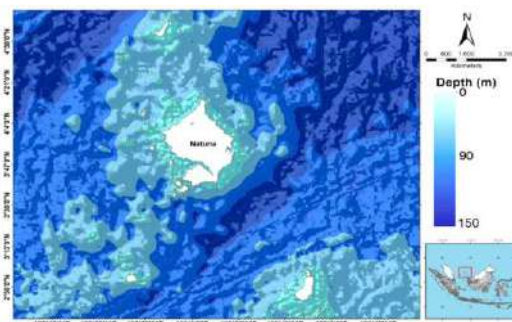


Figure 6. Natuna waters depth.

Based on the 2D model of the Natuna waters depth, it can be elaborated that in the northern part of Natuna towards the South China Sea, the depth range reached 150 m, while in the coastal part of Natuna, the depth ranged from 0 to 30 m.

Endemic species in Natuna waters. Results of the field survey (observations) conducted in Natuna waters and data collection of the species caught in the location through analysis of local market distribution found 2 endemic fish species (fish that exist only in one particular place, and not in others), namely Bombay duck fish (*H. nehereus*) and Goatee croaker fish (*Dendrophysa russelli*). Images of each species can be seen in Figure 7A and Figure 7B.

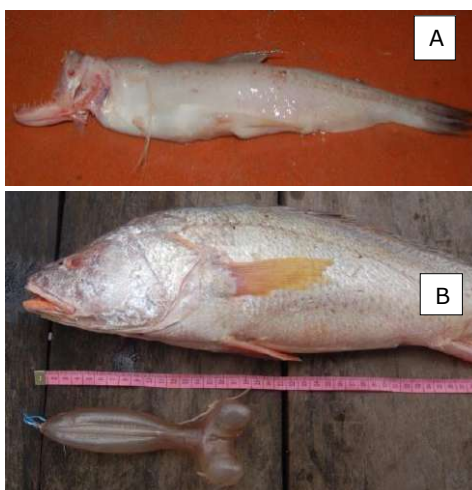


Figure 7. A: Bombay duck fish (*Harpodon nehereus*); B: Goatee croaker fish (*Dendrophysa russelli*).

Bombay duck fish (*H. nehereus*). Bombay duck fish has phylum: Chordata; class: Actinopterygii; order: Aulopiformes; family: Synodontidae; genus: Harpadon; species: *H. nehereus*; phylum: Chordata; class: Pisces; order: Myctophoide; family: Scopelidae; Genus: Harpadon; species: *H. nehereus*. Lomek fish has a slightly flattened elongated body shape, the tip of the snout is short and rounded, and the tail fin has 3 parts: top, bottom, and middle as a continuation of the scale line. The teeth of the two jaws have various shapes; flat arch, large arch, and small arch. The body shape is bilaterally symmetrical, compressed, while the head shape is blunt (Siddique & Aktar 2011; Jin et al 2012; Bhattacharya et al 2016; Bo et al 2013; Salim et al 2020; Rupsankar 2010).

H. nehereus is a type of demersal fish, the preferred type of substrate is mud and fine sand, especially beaches close to river mouths (Kalhoroo et al 2020; Salim et al 2020; Bhattacharya et al 2016). The fish was located on the bottom of the waters with the speed of sea surface currents to breed in the range of 0.2 to 0.4 m s⁻¹ with chlorophyll-a content ranging from 0.2 to 0.5 mm m⁻³ and an SST range ranging from 28 to 30°C in every appearance of *H. nehereus* at the bottom of the waters (Siddique & Aktar 2011; Bo et al 2013).

H. nehereus is a type of fish in Indonesian waters only found in the waters of Natuna and Bangka Belitung. This fish has important economic value in Natuna, Bangka Belitung, and several other coastal areas in Sumatra because it has important economic value. This fish needs to be protected and conserved in order to be sustainable.

Goatee croaker fish (*D. russelli*). Goatee croaker fish with classification phylum: Chordata; class: Actinopterygii; order: Perciformes; family: Sciaenidae; genus: *Dendrophysa*; species: *D. russelli* (Cuvier, 1829). This fish has a slightly flat elongated body (vertical), covered with scales to the head. The first and second dorsal fins are fused (Figure 7B). The back edge of the front gill cover is serrated. The special feature of the Gerot fish is a small mouth but covered by very thick lips (according to one of the local names of this fish). The pectoral fins are longer and tapered than the pelvic fins. The dorsal fin has 12 spines and 13 to 15 soft fin rays. Gerot fish has a silvery gray body-color, with 4-5 longitudinal dark gray stripes that are dashed and faint on the sides of the body. Three or four of these lines are above the lateral line of the body. On the dorsal fin, there are 2 to 3 bands of brown spots. This fish can reach a size of 80 cm, but generally between 40 to 50 cm (Annisa et al 2018; Suprpto 2017; Khairul et al 2018). This fish has an important economic value, especially in its swimming bubbles. The price of this fish is increasing highly because it has swimming bubbles which are very expensive and contains high collagen. This fish exists in sea waters close to rivers with a water temperature range of 28 to 30°C.

Discussion. The results of the study found an average range from 0.1 to 0.5 m s⁻¹ for the current velocity in the east and west monsoons, in Natuna waters. In the east monsoon, the current moved from the south to the north of Natuna (towards the South China Sea). According to (Pamungkas 2018; Purba 2019; Maro et al 2021; Hartoko et al 2019; Wirasatriya et al 2020; Muskananfola et al 2021), during the east monsoon, the wind moved from the continent of Asia to the continent of Australia, while in the west monsoon, the wind will move from the Australian continent to the Asian continent. The influence of the monsoon wind would also affect the Natuna Coastal waters, especially due to their location in between the Natuna Sea, Sumatra Sea and the Java Sea, which is the monsoon wind flow area (Setyawan & Pamungkas 2017). The research found that there was a collision of currents that had an impact on the distribution pattern of chlorophyll-a and sea surface temperature (SST) in the East monsoon in the coastal waters of Natuna. The results of the analysis of the average distribution of chlorophyll-a were in the range of 0.2 to 1.0 mm m⁻² and the SST ranged from 28.0 to 30.0°C. The

previous research (Muskananfolo et al 2021; Pamungkas 2018; Maro et al 2021; Hartoko 2010; Sukresno et al 2015; Sukresno et al 2018; Lebrek et al 2019) found that if there is a collision between the sea surface currents in a body of water, the chlorophyll-a will increase and the SST will decrease. This is common in the coastal areas, due to the presence of numerous small islands that are close to each other, thus blocking the movement of currents from deep waters to shallow waters. These waters tend to have a high level of fertility so that many organisms roam in these waters for shelter, foraging and spawning. Conversely, in the West monsoon (November to December), the movement pattern of the current is from the northern part of Natuna (the South China Sea) to the Natuna coastal waters. The results of the study found that the current movement was influenced by the west monsoon, which blew strongly from the Pacific Ocean towards the South China Sea, then towards the Natuna Coast, the Sumatra Sea and the Java Sea. According to (Hartoko et al 2019; Maro et al 2021; Wirasatriya et al 2020; Muskananfolo et al 2021) the movement of incoming currents from the northern part of Indonesia was caused by the west monsoon wind blowing from the Pacific Ocean to the Indian Ocean, resulting in a significant increase in the current speed during that season.

During the West monsoon, an upwelling occurred in the Natuna coastal waters, resulting in a decrease of the SST and chlorophyll-a. Mixing the seawater masses (by upwelling) could decrease the SST and chlorophyll-a at sea level. Waters that have upwelling characteristics are fertile, in terms of nutrients and chlorophyll-a, which makes them attracting for many marine organisms in their migration for food and spawning (García-Reyes et al 2015; Chung & Gong 2019; Putra et al 2016; Wirasatriya et al 2020; Sukresno et al 2015; Putra & Mustika 2021).

The study found 2 types of endemic fish, during the west and east monsoons, namely *H. nehereus* and *D. russelli*, which were found in the Natuna coastal waters, with a surface current velocity ranging from 0.1 to 0.5 m s⁻¹, a chlorophyll-a sea level ranging from 0.2 to 1.0 mg m⁻³, an average SST ranging from 28 to 30°C, and an average water depth ranging from 0 to 150 m. According to Siddique & Aktar (2011), Jin et al (2012), Bhattacharya et al (2016), Annisa et al (2016), and Suprpto (2017), at the location of the appearance of *H. nehereus* and *D. russelli* in coastal waters, the average sea surface temperature ranged from 27 to 30°C, the sea surface currents ranged from 0.3 to 0.5 m s⁻¹ and the average depth ranged from 0 to 20 m. A management of these endemic fish species has to be implemented in order to preserve their populations sustainability, considering their significant economic value, making them more susceptible to be overexploited. Therefore, it is necessary to manage the species *H. nehereus* and *D. russelli* in Natuna waters in order to remain sustainable.

Conclusions. The research results of the oceanographic variables analysis, mainly the depth, SST, chlorophyll-a content and monsoonal current speed, will support the site selection and the attempt of endemic fish conservation, mainly in the shallow water of the coastal areas around Natuna islands. The research occurred during the east season (May to October) and the west season (November to April) 2019. The SST ranged from 28.0 to 31.0°C, the current speed of west and east season ranged from 0.1 to 0.5 m s⁻¹, the chlorophyll-a content ranged from 0.2 to 1.0 mg m⁻³ and the depth ranged from 0 to 150 m. The two identified endemic fish are *H. nehereus* and *D. russelli*.

Acknowledgements. The authors would like to thank to the Dean Faculty of Fisheries and Marine Science, Diponegoro University, Semarang, Indonesia, for the research grant, But also to all other parties for their help during the field sampling and laboratory analysis.

Conflict of interest. The authors declare no conflict of interest.

References

- Afifa F. H., Hartoko A., Purnomo P. W., 2020 Changes and vulnerability of coral reef ecosystem based on field and remote sensing data on Kemujan Island, Karimunjawa Islands, Indonesia. *AAFL Bioflux* 13(2):1016-1026.
- Annisa C. A., Rahardjo M. F., Zahid A., Simanjuntak C. P. H., Asriansyah A., Aditriawan R. M., 2018 [Diet and feeding habits of the Javelin Grunt, *Pomadasys kaakan* (Cuvier, 1830) in Pabean Bay, West Java]. *Gadjah Mada University of Fisheries Journal* 20(1):31-40. [In Indonesian].
- Bhattacharya T., Ghorai T., Dora K. C., Sarkar S., Chowdhury S., 2016 Influence of chemical preservatives on the quality and shelf-life of dried Bombay duck (*Harpodon nehereus*). *The Asian Journal of Animal Science* 11(1):1-8.
- Bo Z., Xu T., Wang R., Jin X., Sun Y., 2013 Complete mitochondrial genome of the bombay duck *Harpodon nehereus* (Aulopiformes, Synodontidae). *Mitochondria DNA. The Journal of DNA Mapping, Sequencing, and Analysis* 24(6):660-662.
- Chung C. C., Gong G. C., 2019 Attribution of the growth of a distinct population of synechococcus to the coverage of lateral water on an upwelling. *Terrestrial, Atmospheric and Oceanic Sciences* 30:575-587.
- Deliamia, 2017 [Estimation of sustainable potential and utilization level of sea anemone (*Sticodactyla gigantea*) in Makassar Strait Waters]. MSc thesis. Water Resources Management Study Program, Department of Fisheries, Faculty of Marine and Fishery Sciences, Hasanuddin University, Makassar, 27 p. [In Indonesian].
- García-Reyes M., Sydeman W. J., Schoeman D. S., Rykaczewski R. R., Black B. A., Smit A. J., Bograd S. J., 2015 Under pressure: climate change, upwelling, and eastern boundary upwelling ecosystems. *Frontiers in Marine Science* 2:109.
- Hartoko A., 2010 Spatial distribution of thunnus sp, vertical and horizontal sub-surface multilayer temperature profiles of in-situ agro float data in Indian Ocean. *Journal Of Coastal Development* 14(1):61-74.
- Hartoko A., Helmi M., Sukarno M., Hariyadi, 2016 Spatial tsunami wave modelling for the South Java Coastal Area, Indonesia. *International Journal of GEOMATE* 11(25):2455-2460.
- Hartoko A., Febrianto A., Pamungkas A., Fachruddin I., Helmi M., Hariyadi, 2019 The myth and legend of Sadai and Gaspar Strait Bangka Belitung (Banca-Billiton) and oceanographic conditions. *International Journal of GEOMATE* 17(62):212-218.
- Jin T., Wu Y., Wang Q., 2012 Production and characteristics of protein hydrolysates from bombay duck (*Harpodon nehereus*). *Journal of Food Processing and Preservation* 36(1):30-37.
- Kalhoroa M. T., Yongtong M., Kalhorob M. A., Shahc S. B. H., Memond A. M., Moshine M., Dahria M. A., 2020 Resource evaluation, stock, growth and mortality of the Bombay duck (*Harpodon nehereus* Hamilton, 1822) fishery in the coastal waters of Pakistan. *Indian Journal of Geo Marine Sciences* 49(7):1222-1228.
- Khairul, Mawardi W., Riyanto M., 2018 [Use of blue light emitting diode (Led) lamps on floating chart catches in Aceh Jaya District]. *Albacore Marine Fisheries Research Journal* 1(2):235-243. [In Indonesian].
- Kusumaningtyas M. A., Bramawanto R., Daulat A., Pranowo W. S., 2014 [The water quality of Natuna coastal water during transitional season]. *DEPIK Journal of Science - Aquatic, Coastal and Fishery Sciences* 3(1):10-20. [In Indonesian].
- Lebrec M., Stefanski S., Gates R., Acar S., Golbuu Y., Claudel-Rusin A., Kurihara H., Rehdanz K., Paugam-Baudoin D., Tsunoda T., Swarzenski P. W., 2019 Ocean acidification impacts in select Pacific Basin coral reef ecosystems. *Regional Studies in Marine Science* 28:1-8.
- Maro J. F., Hartoko A., Anggoro S., Muskananfolo M. R., Nugraha E., 2021 Sea surface temperature and chlorophyll-a concentrations from MODIS satellite data and presence of cetaceans in Savu, Indonesia. *AAFL Bioflux* 14(3):1190-1200.
- Muskananfolo M. R., Jumsar, Wirasatriya A., 2021 Spatio-temporal distribution of chlorophyll-a concentration, sea surface temperature and wind speed using aquamodis satellite imagery over the Savu Sea, Indonesia. *Remote Sensing Applications: Society and Environment* 22:1-9.

- Nababan B., Hadianti S., Natih N. M. N., 2015 [Dynamic of sea level anomaly of Indonesian waters]. *Journal of Tropical Marine Science and Technology* 7(1):259-272. [In Indonesian].
- Nababan B., Simamora K., 2012 [Variability of chlorophyll-a concentration and sea surface temperature of Natuna Waters]. *Journal of Tropical Marine Science and Technology* 4(1):121-134. [In Indonesian].
- Pamungkas A., 2018 [Characteristics of oceanographic parameters (tidals, currents, and waves) in the north and south waters of Bangka Island]. *Marina Oceanography Bulletin* 7(1):51-58. [In Indonesian].
- Purba N. P., Pranowo W. S., Simanjuntak S. M., Faizal I., Jasmin H. H., Handyman D. I. W., Mulyani P. G., 2019 [Trajectory of microplastics at Savu Sea Marine National Park, East Nusa Tenggara]. *DEPIK. Journal of Aquatic, Coastal and Fishery Sciences*, 8(2):125-134. [In Indonesian].
- Putra M. I. H., Lewis S. A., Kurniasih E. M., Prabuning D., Faiqoh E., 2016 Plankton biomass models based on GIS and remote sensing technique for predicting marine megafauna hotspots in the Solor Waters. *IOP Conference Series: Earth and Environmental Science* 47:1-19.
- Putra M. I. H., Mustika P. L. K., 2021 Maximum entropy model: Estimating the relative suitability of cetacean habitat in the Northern Savu Sea, Indonesia. *Marine Mammal Science* 37(1):6-28.
- Rupsankar C., 2010 Improvement of cooking quality and gel formation capacity of bombay duck (*Harpodon nehereus*) fish meat. *Journal of Food Science and Technology* 47(5):534-540.
- Salim G., Handayani K. R., Anggoro S., Indarjo A., Syakti A. D., Ibrahim A. J., Ransangan J., Prakoso L. Y., 2020 Morphometric analysis of *Harpodon nehereus*, *Harpiosquilla raphidea*, and *Scylla serrata* in the coastal waters of Tarakan, North Kalimantan, Indonesia. *Biodiversitas* 21(10):4829-4838.
- Setyawan W. B., Pamungkas A., 2017 [Comparison of oceanographic characteristics of the north and south coasts of Java Island: Tides, currents, and waves]. *Proceedings of the 2017 National Marine and Fisheries Seminar III*. Trunojoyo University, Madura, pp. 191-202. [In Indonesian].
- Siddique M. A. M., Aktar M., 2011 Changes of nutritional value of three marine dry fishes (*Johnius dussumieri*, *Harpodon nehereus* and *Lepturacanthus savala*) during Storage. *Food and Nutrition Sciences* 02(10):1082-1087.
- Sukresno B., Hanintyo R., Kusuma D. W., Jatisworo D., Murdimanto A., 2018 Three-way error analysis of sea surface temperature (SST) between Himawari-8, Buoy, and Mur SST In Savu Sea. *International Journal of Remote Sensing and Earth Sciences (IJReSES)* 15(1):25-36.
- Sukresno B., Hartoko A., Sulistyono B., Subiyanto, 2015 Empirical cumulative distribution function (ECDF) analysis of *Thunnus* sp. using ARGO float sub-surface multilayer temperature data in Indian Ocean South of Java. *International Conference on Tropical and Coastal Region Eco-Development 2014 (ICTRED 2014)*. *Procedia Environmental Sciences* 23:358-367.
- Suprpto S., 2017 [Demersal fish biodiversity index in Arafura waters]. *Indonesian Journal of Fisheries Research* 14(3):321-335. [In Indonesian].
- Wirasatriya A., Setiawan J. D., Sugianto D. N., Rosyadi I. A., Haryadi, Winarso G., Setiawan R. Y., Susanto R. D., 2020 Ekman dynamics variability along the southern coast of Java revealed by satellite data. *International Journal of Remote Sensing* 41(21):8475-8496.
- Wyrtki K., 1961 Physical oceanography of the Southeast Asian waters. In: *Scientific results of maritime investigations of the South China Sea and Gulf of Thailand 1959-1961*. Naga Report 2. University of California/Scripps Institute of Oceanography, California, 195 p.

Received: 2021. Accepted: 2021. Published online: 2021.

Authors:

Hariyadi, Faculty of Fisheries and Marine Science, Marine Science Doctoral Programe, Diponegoro University, Prof. Sudarto Street, Semarang 50275, Central Java, Indonesia, e-mail: hargeoku@gmail.com

Johannes Hutabarat, Faculty of Fisheries and Marine Science, Diponegoro University, Prof. Sudarto Street, Semarang 50275, Central Java, Indonesia, e-mail: johannesfpik@gmail.com

Denny Nugroho Sugianto, Faculty of Fisheries and Marine Science, Diponegoro University, Prof. Sudarto Street, Semarang 50275, Central Java, Indonesia, e-mail: dennysugianto@yahoo.com

Agus Hartoko, Faculty of Fisheries and Marine Science, Diponegoro University, Prof. Sudarto Street, Semarang 50275, Central Java, Indonesia, e-mail: agushartoko.undip@gmail.com

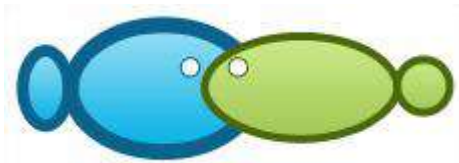
Jahved Ferianto Maro, Faculty of Fisheries and Marine Science, Diponegoro University, Prof. Sudarto Street, Semarang 50275, Central Java, Indonesia, e-mail: yantogisuntrib@gmail.com

Erick Nugraha, Faculty of Fishing Technology, Jakarta Technical University of Fisheries, Jakarta, Indonesia, AUP Street, Pasarminggu 12520, South Jakarta, Indonesia, e-mail: nugraha_eriq1@yahoo.co.id

This is an open-access article distributed under the terms of the Creative Commons Attribution License, which permits unrestricted use, distribution and reproduction in any medium, provided the original author and source are credited.

How to cite this article:

Hariyadi, Hutabarat J., Sugianto D. N., Hartoko A., Maro J. F., Nugraha E., 2021 Analysis of specific shallow water current for endemic fish conservation at Natuna Islands, Indonesia. *AAFL Bioflux* 14():



ACCEPTANCE FOR PUBLISHING

Hereby we declare our article with the title:

Analysis of Specific Shallow Water Current for Endemic Fish Conservation at Natuna Islands, Indonesia.

It has gone through several editing processes and we agreed to publish it. Thank you.

Name of the authors:

Hariyadi,

Johannes Hutabarat,

Denny N Sugianto

Agus Hartoko,

Jahved F Maro

Erick Nugraha

July 07, 2021